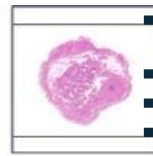
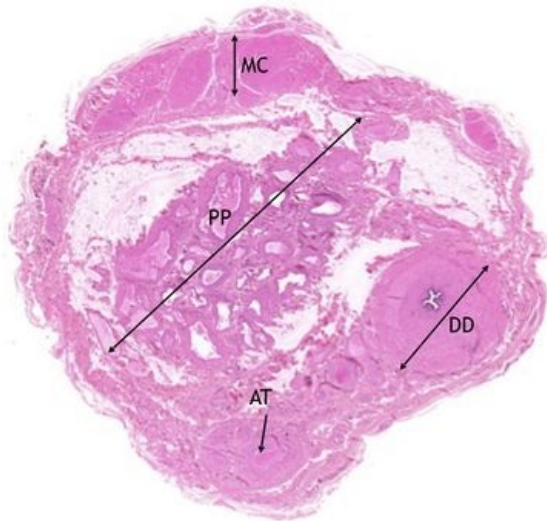


Funiculus spermaticus - HE

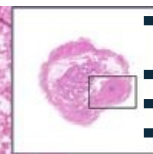
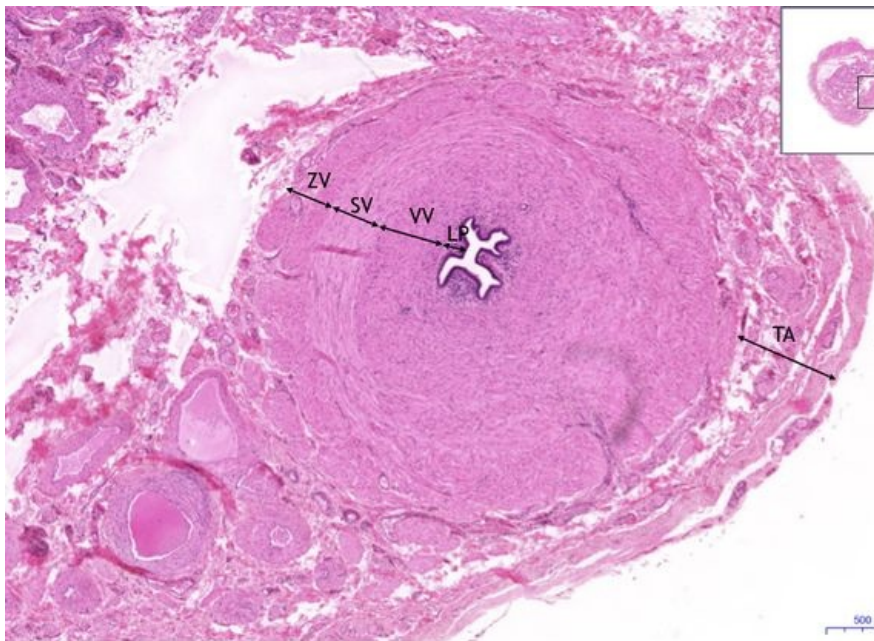
Funiculus spermaticus - HE, 0,6x



Funiculus spermaticus:

- 1) MC - musculus cremaster
- 2) PP - plexus pampiniformis
- 3) AT - artérie testicularis/testicular artery
- 4) DD - ductus deferens

Funiculus spermaticus - HE, 2x



Funiculus spermaticus:

- 1) TA - musculus cremaster
- 2) DD - tunica albuginea
- a) LP - lamina propria

Svalové vrstvy / Muscle layers:

- c) VV - vnitřní vrstva - longitudinální/ inner layer -longitudinal
- d) ST - střední vrstva - cirkulární/ middle layer - circular
- e) ZV - zevní (longitudinální) vrstva / outer (longitudinal) layer

Funiculus spermaticus - HE, 10x

Funiculus spermaticus:

- 4) DD - ductus deferens
- a) EC - cylindrický epitel, dvouřadý / columnar epithelium, two layered
- b) LP - lamina propria
- c) L - lumen

Svalové vrstvy / Muscle layers:

- c) VV - vnitřní vrstva - longitudinální/ inner layer -longitudinal



Navigace

Navigace: Zažívací systém - Digestive tract

← Preparát M2 | Seznam preparátů | Preparát M3a →