

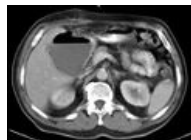
Kategorie:CT

Media in category "CT"

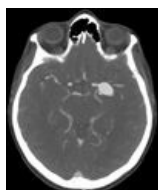
The following 75 files are in this category, out of 75 total.



Absces jater po d...
1,204 × 886; 364 KB



Absces jater před...
1,198 × 901; 352 KB



Aneuryzma ACM ...
787 × 948; 174 KB



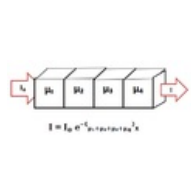
Aneuryzmata lie...
1,050 × 832; 287 KB



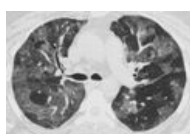
Arteria lusoria.gif
320 × 240; 590 KB



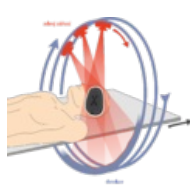
Arteria lusoria.jpg
885 × 937; 355 KB



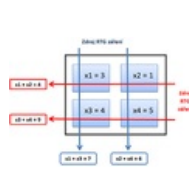
Ct 2.png
490 × 216; 7 KB



CT plicní edém.jpg
1,280 × 866; 115 KB



CT.png
1,919 × 1,754; 372 KB



Ct.png
280 × 196; 19 KB



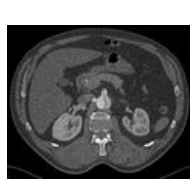
Disekce aorty.jpg
336 × 863; 117 KB



Disekce ascende...
1,046 × 977; 212 KB



Disekce descend...
1,017 × 766; 193 KB



Disekce visceráln...
962 × 790; 296 KB



Epidurální hematom...
706 × 687; 131 KB



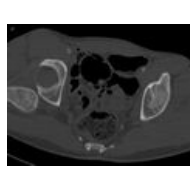
Infarzace jejuna ...
1,067 × 976; 94 KB



Koarktace 1.jpg
957 × 935; 477 KB



Koarktace 2.jpg
807 × 927; 253 KB



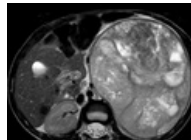
Luxace pravé kyč...
739 × 565; 98 KB



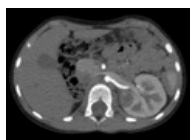
Luxační fraktura ...
473 × 975; 233 KB



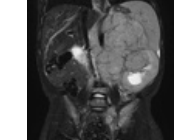
Meta jater a slezi...
1,295 × 933; 410 KB



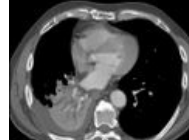
Nefroblastom - 5t...
813 × 648; 473 KB



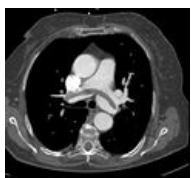
Nefroblastom soli...
715 × 531; 280 KB



Neuroblastom 1...
635 × 798; 498 KB



Nádor pravého hl...
992 × 870; 233 KB



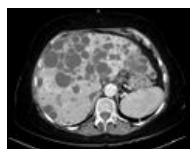
PE.jpg
897 × 821; 197 KB



Perzistující Botall...
1,407 × 837; 296 KB



Pneumocefalus 1...
722 × 812; 240 KB



Polycystóza jater...
1,090 × 839; 317 KB



Polytrauma lebka...
512 × 512; 99 KB



Polytrauma lebka...
512 × 512; 108 KB



Polytrauma lebka...
512 × 512; 115 KB



Polytrauma lebka...
512 × 512; 120 KB



Polytrauma lebka...
512 × 512; 122 KB



Polytrauma lebka...
512 × 512; 121 KB



Polytrauma lebka...
512 × 512; 120 KB



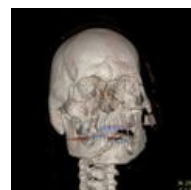
Polytrauma lebka...
512 × 512; 115 KB



Polytrauma lebka...
512 × 512; 109 KB



Polytrauma lebka...
512 × 512; 100 KB



Polytrauma lebka...
512 × 512; 104 KB



Polytrauma lebka...
512 × 512; 111 KB



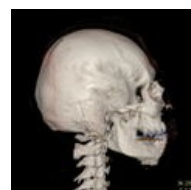
Polytrauma lebka...
512 × 512; 115 KB



Polytrauma lebka...
512 × 512; 116 KB



Polytrauma lebka...
512 × 512; 116 KB



Polytrauma lebka...
512 × 512; 112 KB



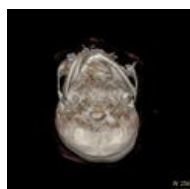
Polytrauma lebka...
512 × 512; 110 KB



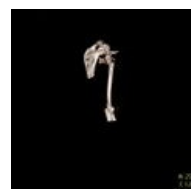
Polytrauma lebka...
512 × 512; 106 KB



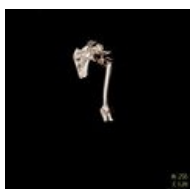
Polytrauma lebka...
512 × 512; 99 KB



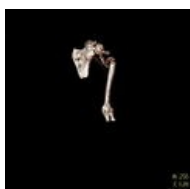
Polytrauma lebka...
484 × 484; 75 KB



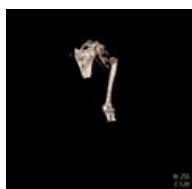
Polytrauma rame...
512 × 512; 24 KB



Polytrauma rame...
512 × 512; 26 KB



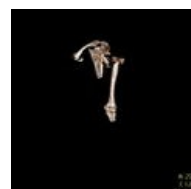
Polytrauma rame...
512 × 512; 27 KB



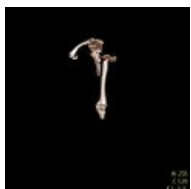
Polytrauma rame...
512 × 512; 28 KB



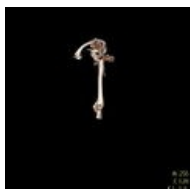
Polytrauma rame...
512 × 512; 28 KB



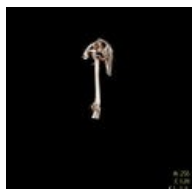
Polytrauma rame...
512 × 512; 27 KB



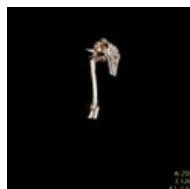
Polytrauma rame...
512 × 512; 25 KB



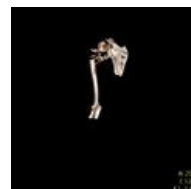
Polytrauma rame...
512 × 512; 24 KB



Polytrauma rame...
512 × 512; 24 KB



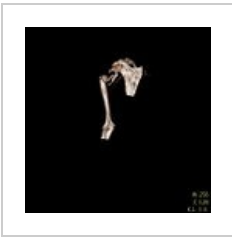
Polytrauma rame...
512 × 512; 24 KB



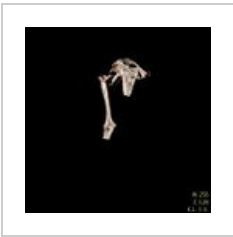
Polytrauma rame...
512 × 512; 26 KB



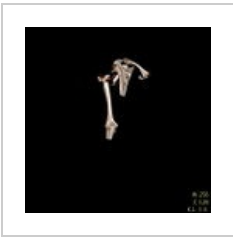
Polytrauma rame...
512 × 512; 27 KB



Polytrauma rame...
512 × 512; 28 KB



Polytrauma rame...
512 × 512; 28 KB



Polytrauma rame...
512 × 512; 27 KB



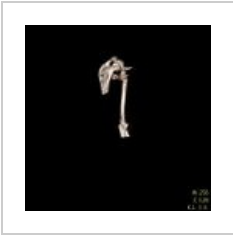
Polytrauma rame...
512 × 512; 25 KB



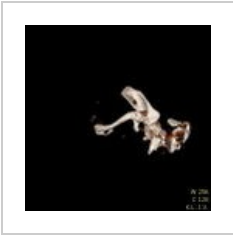
Polytrauma rame...
512 × 512; 27 KB



Polytrauma rame...
512 × 512; 24 KB



Polytrauma rame...
512 × 512; 24 KB



Polytrauma rame...
484 × 484; 37 KB



Pseudocyst slini...
1,153 × 892; 285 KB



Pseudocyst slini...
1,148 × 901; 325 KB



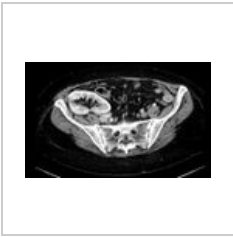
SD hematom dvo...
811 × 958; 278 KB



SD hematom dvo...
839 × 952; 254 KB



SD hematom dvo...
1,001 × 890; 201 KB



Tx ledvina 1.jpg
1,143 × 710; 276 KB