

Kategorie:Embryologická schémata

Pages in category "Embryologická schémata"

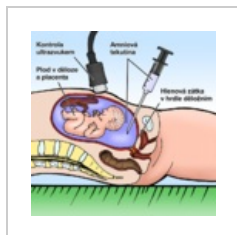
This category contains only the following page.

E

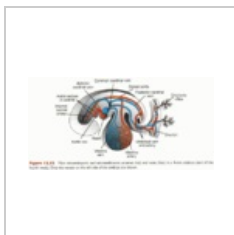
- Embryonální orgány 7 ED

Media in category "Embryologická schémata"

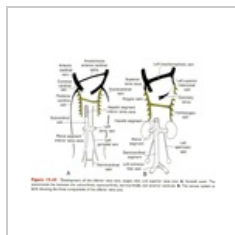
The following 37 files are in this category, out of 37 total.



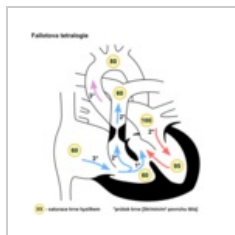
Amniocenteza.png
800 × 800; 137 KB



Celkový pohled.p...
508 × 253; 36 KB



Celkový pohled2...
594 × 430; 241 KB



Defekt fallot.png
600 × 600; 84 KB



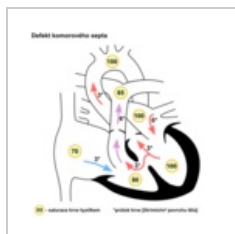
Defekt fallot.svg
600 × 600; 36 KB



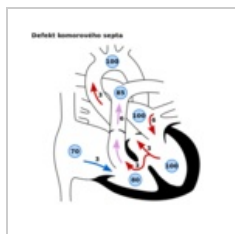
Defekt koarktace...
600 × 600; 59 KB



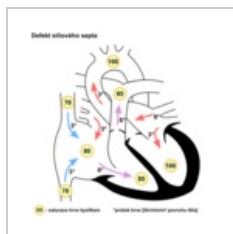
Defekt pda.png
600 × 600; 65 KB



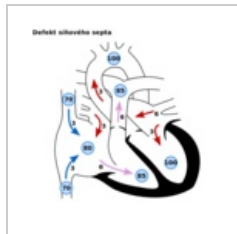
Defekt septum k...
600 × 600; 85 KB



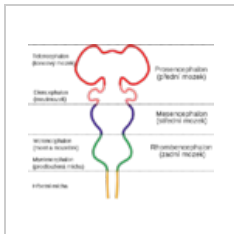
Defekt septum k...
600 × 600; 34 KB



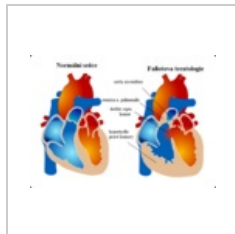
Defekt septum si...
600 × 600; 88 KB



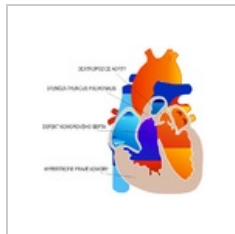
Defekt septum si...
600 × 600; 38 KB



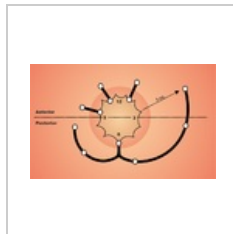
Embryonální moz...
710 × 599; 57 KB



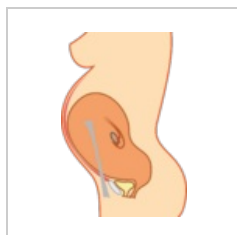
Fallotova teratolo...
614 × 441; 117 KB



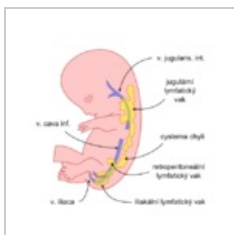
Fallotova tetralo...
744 × 609; 139 KB



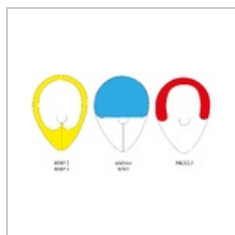
Goodsall.png
800 × 493; 339 KB



Graviteres.png
1,036 × 1,539; 153 KB



Jugulární vaky.png
520 × 520; 73 KB



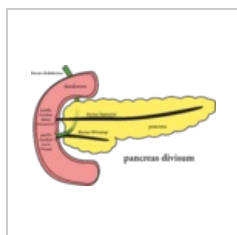
Kardiogenní zóna...
3,000 × 1,693; 140 KB



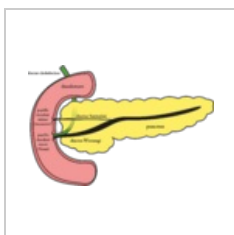
Molekulární vyvoj...
437 × 267; 41 KB



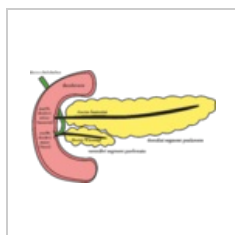
Omfalokela a gas...
700 × 373; 93 KB



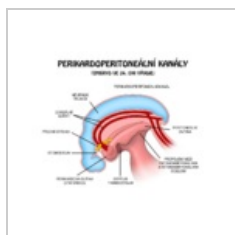
Pancreas divisum...
2,768 × 1,807; 394 KB



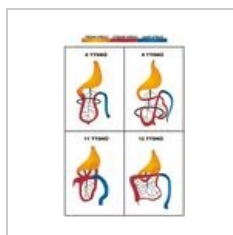
Pancreas norma...
2,768 × 1,807; 377 KB



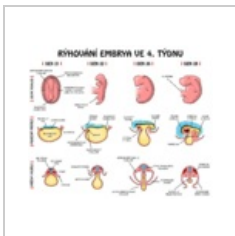
Pancreas vývoj.png
2,830 × 1,724; 416 KB



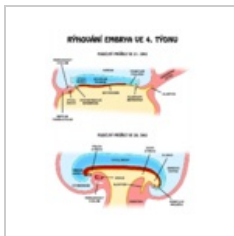
Perikardoperiton...
1,000 × 800; 97 KB



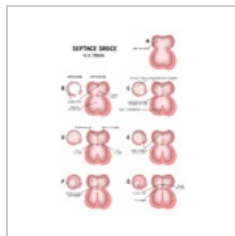
Rotace streva.jpg
500 × 761; 155 KB



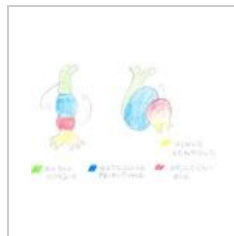
Rýhování týden 4...
2,400 × 2,000; 488 KB



Rýhování týden 4...
825 × 1,000; 108 KB



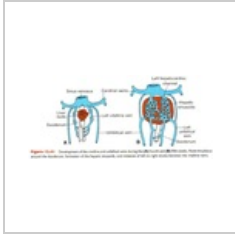
Septace srdce.png
1,400 × 2,000; 274 KB



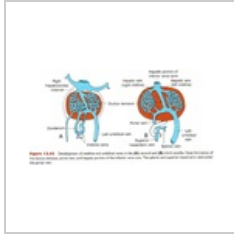
Srdeční klička.jpg
448 × 295; 31 KB



Vaskulogenéza a ...
2,531 × 1,889; 507 KB



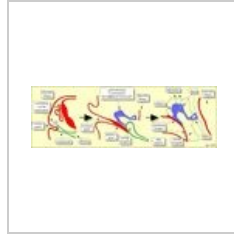
Vitelinni1.png
599 × 272; 186 KB



Vitelinni2.png
595 × 309; 215 KB



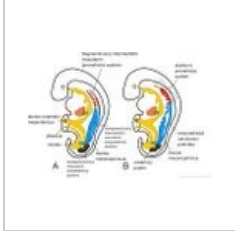
Volvulus.png
500 × 794; 59 KB



Vyvoj cavitas.jpg
704 × 232; 100 KB



Vyvoj srdce - dia...
494 × 346; 61 KB



Vývojové typy vy...
979 × 665; 156 KB



Řezy embryem.jpg
1,486 × 1,887; 271 KB