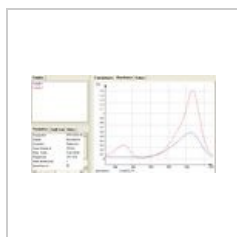


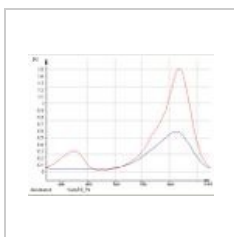
# Kategorie:Grafy

## Media in category "Grafy"

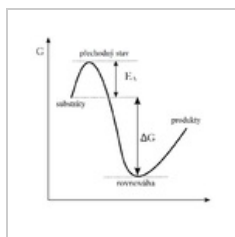
The following 133 files are in this category, out of 133 total.



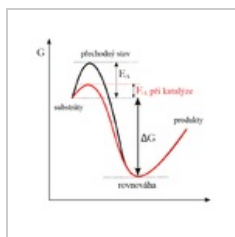
Absorbance vzor...  
769 × 404; 41 KB



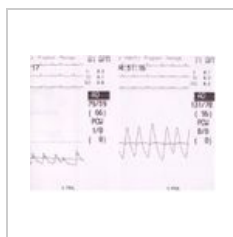
Absorbce.jpg  
506 × 386; 23 KB



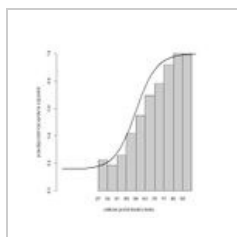
Aktivacni-energie-...  
639 × 611; 21 KB



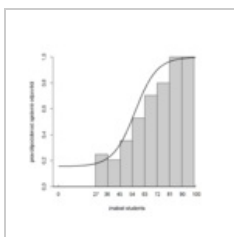
Aktivacni-energie-...  
642 × 609; 28 KB



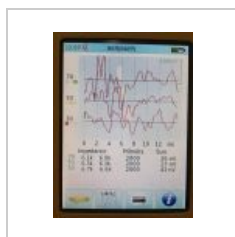
Aortografie disek...  
700 × 522; 72 KB



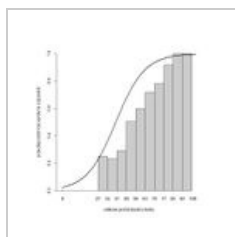
Aproximace IRT ...  
642 × 671; 65 KB



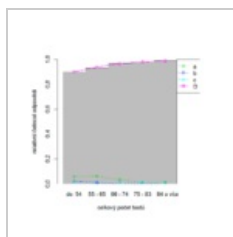
Aproximace IRT ...  
1,200 × 1,200; 53 KB



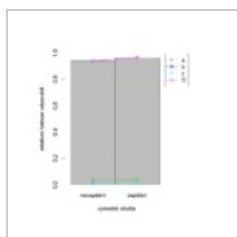
Baep.jpg  
720 × 960; 130 KB



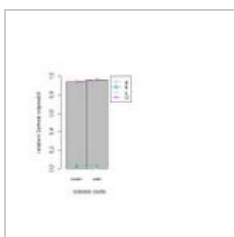
Barplot ICC 1PLM...  
642 × 671; 43 KB



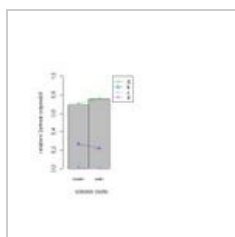
CH10 citlivost dle...  
1,000 × 1,000; 42 KB



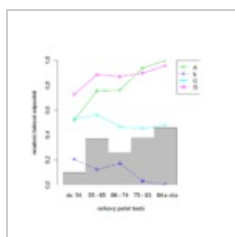
CH10 citlivost dle...  
1,000 × 1,000; 14 KB



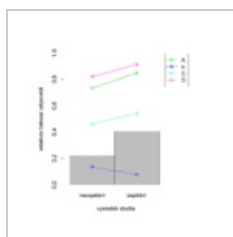
CH10 uprava.jpeg  
550 × 450; 39 KB



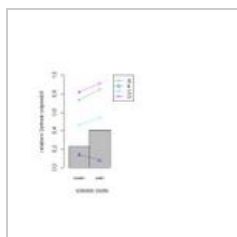
CH17 uprava.jpeg  
550 × 450; 41 KB



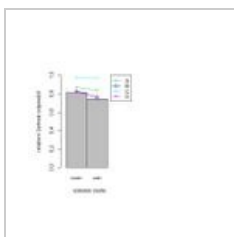
CH28 citlivost dle...  
1,000 × 1,000; 46 KB



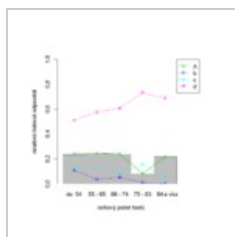
CH28 citlivost dle...  
1,000 × 1,000; 13 KB



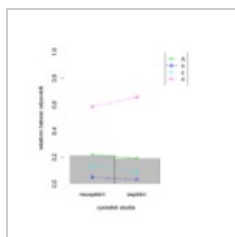
CH28 uprava.jpeg  
550 × 450; 42 KB



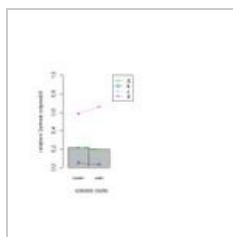
CH4 uprava.jpeg  
550 × 450; 40 KB



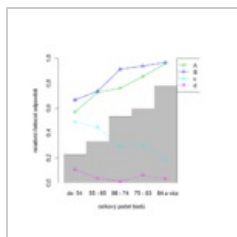
CH44 citlivost dle...  
1,000 × 1,000; 45 KB



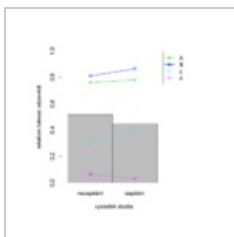
CH44 citlivost dle...  
1,000 × 1,000; 12 KB



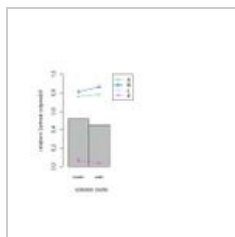
CH44 uprava.jpeg  
550 × 450; 40 KB



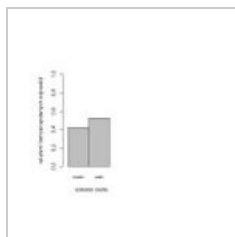
CH55 citlivost dle...  
1,000 × 1,000; 46 KB



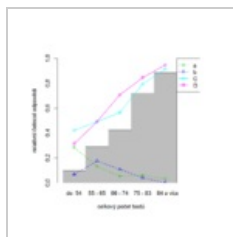
CH55 citlivost dle...  
1,000 × 1,000; 13 KB



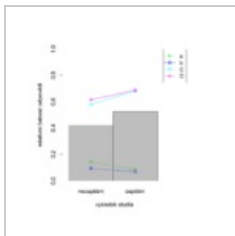
CH55 uprava.jpeg  
550 × 450; 41 KB



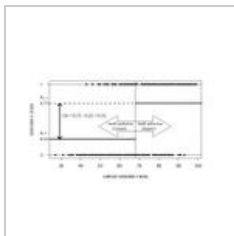
CH64 bez variant...  
550 × 450; 31 KB



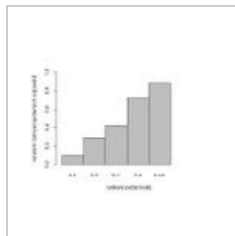
CH64 citlivost dle...  
1,000 × 1,000; 47 KB



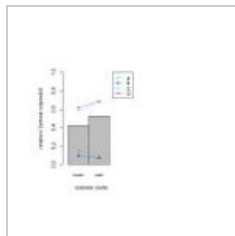
CH64 citlivost dle...  
1,000 × 1,000; 14 KB



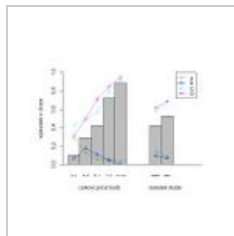
CH64 ULI.jpg  
675 × 458; 54 KB



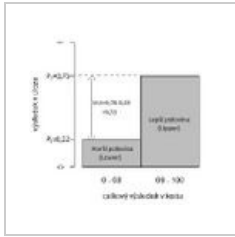
CH64 uspesnost5...  
550 × 450; 39 KB



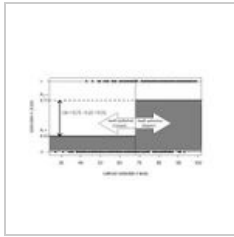
CH64.jpeg  
550 × 450; 40 KB



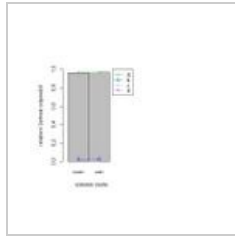
CH64citlivostSko...  
550 × 450; 64 KB



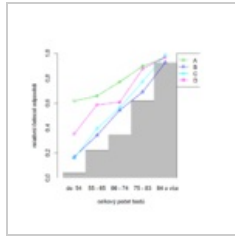
CH64ULIsloupcov...  
492 × 455; 63 KB



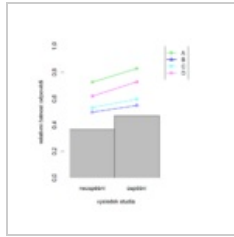
CH64ULIvybarve...  
675 × 458; 53 KB



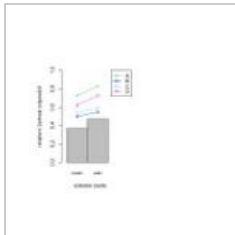
CH8 uprava.jpeg  
550 × 450; 39 KB



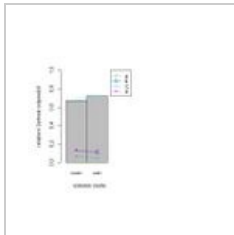
CH89 citlivost dle...  
1,000 × 1,000; 49 KB



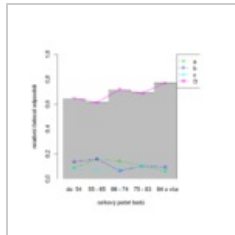
CH89 citlivost dle...  
1,000 × 1,000; 14 KB



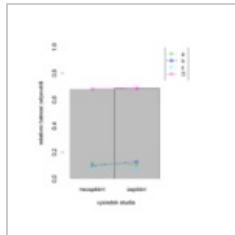
CH89 uprava.jpeg  
550 × 450; 41 KB



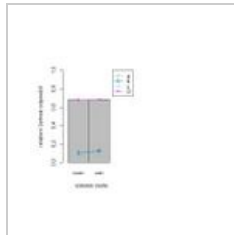
CH95 uprava.jpeg  
550 × 450; 40 KB



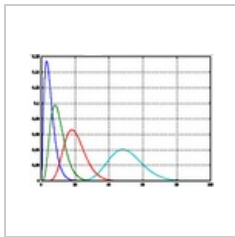
CH97 citlivost dle...  
1,000 × 1,000; 44 KB



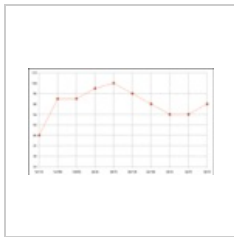
CH97 citlivost dle...  
1,000 × 1,000; 14 KB



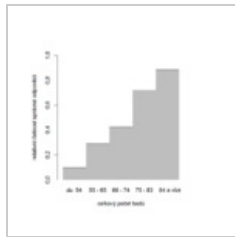
CH97 uprava.jpeg  
550 × 450; 38 KB



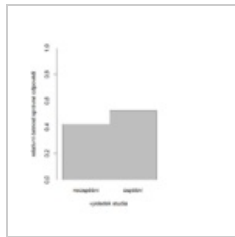
Chi2pdf.png  
400 × 287; 28 KB



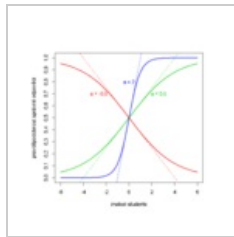
Chorobopis pedia...  
683 × 391; 10 KB



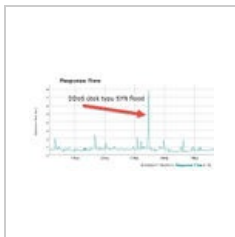
Citlivost dle hrub...  
1,000 × 1,000; 39 KB



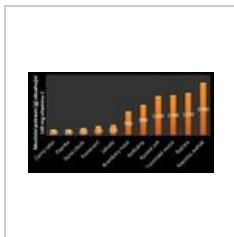
Citlivost dle uspe...  
1,000 × 1,000; 12 KB



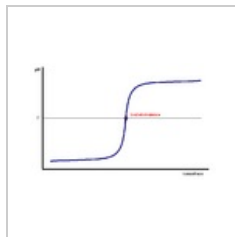
Citlivost v 2para...  
1,200 × 1,200; 17 KB



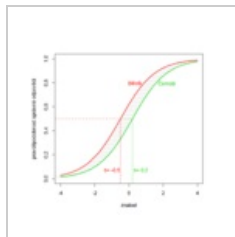
DDoS útok typu ...  
665 × 355; 91 KB



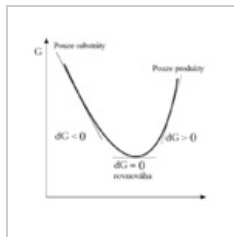
Ekv vit C.jpg  
448 × 243; 17 KB



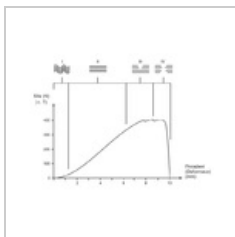
Ekvivalence.PNG  
772 × 489; 10 KB



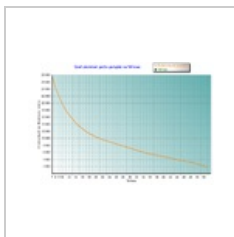
Ferovost polozky...  
1,200 × 1,200; 16 KB



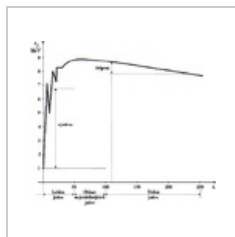
Gibsova-E---cj.png  
640 × 612; 25 KB



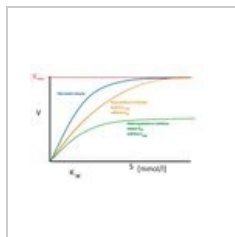
Graf protazení va...  
640 × 480; 33 KB



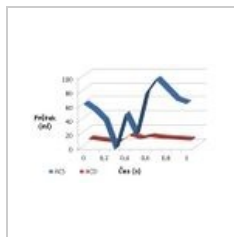
Graf četnosti poh...  
1,000 × 661; 224 KB



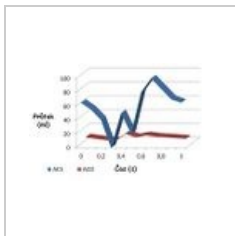
Graf-1.png  
534 × 476; 18 KB



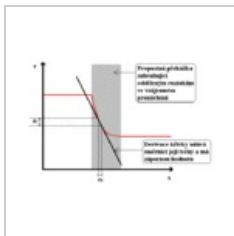
Graf-inhibice.jpg  
1,481 × 937; 148 KB



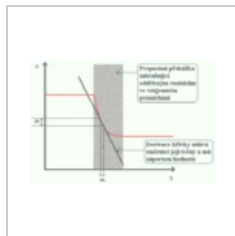
Graf-koronarni-pr...  
1,033 × 664; 55 KB



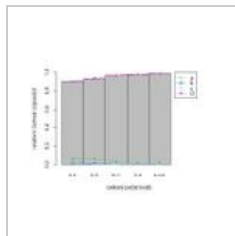
Graf-koronarni-pr...  
536 × 339; 22 KB



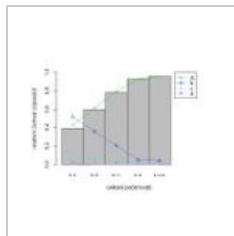
Graf.gif  
558 × 372; 6 KB



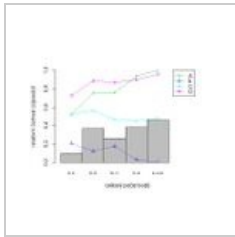
Graf.png  
558 × 372; 9 KB



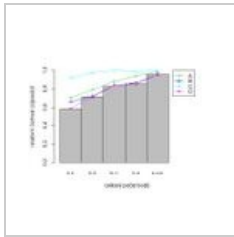
GrafCH10.jpeg  
550 × 450; 58 KB



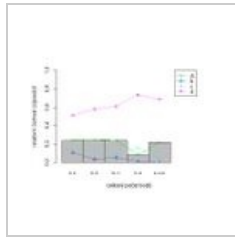
GrafCH17.jpeg  
550 × 450; 65 KB



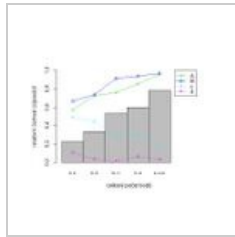
GrafCH28.jpeg  
550 × 450; 66 KB



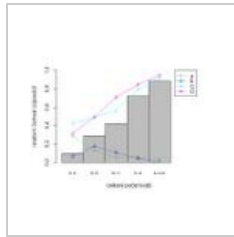
GrafCH4.jpeg  
550 × 450; 62 KB



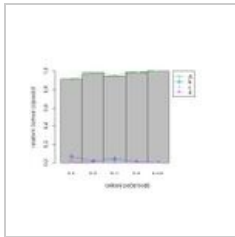
GrafCH44.jpeg  
550 × 450; 61 KB



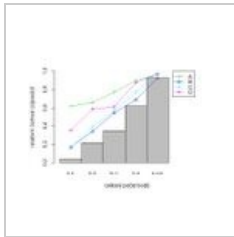
GrafCH55.jpeg  
550 × 450; 65 KB



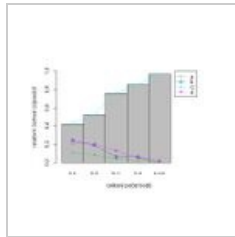
GrafCH64.jpeg  
550 × 450; 66 KB



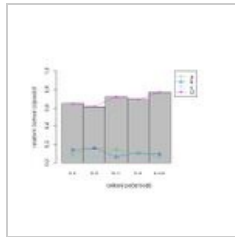
GrafCH8.jpeg  
550 × 450; 58 KB



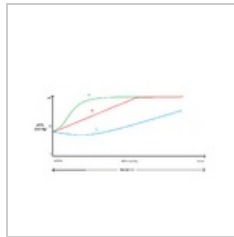
GrafCH89.jpeg  
550 × 450; 68 KB



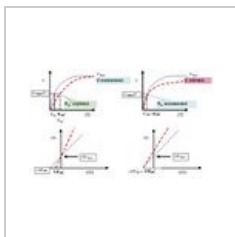
GrafCH95.jpeg  
550 × 450; 60 KB



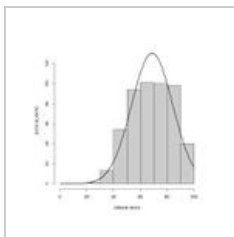
GrafCH97.jpeg  
550 × 450; 59 KB



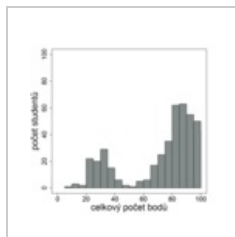
Grafu.png  
1,019 × 675; 17 KB



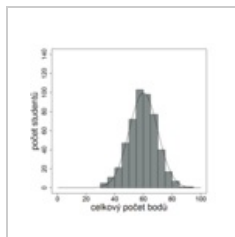
Grafy-inhibicia.jpg  
1,582 × 950; 227 KB



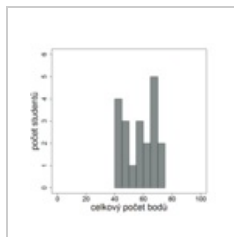
Hist skore CH.jpeg  
642 × 671; 56 KB



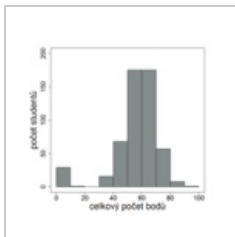
Histogram 2 sku...  
600 × 600; 39 KB



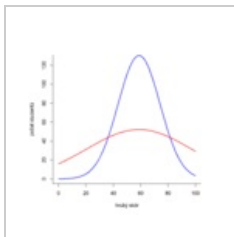
Histogram hruby...  
1,200 × 1,200; 19 KB



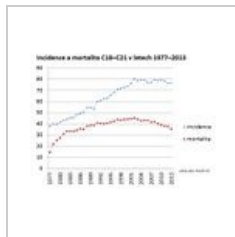
Histogram malo ...  
1,200 × 1,200; 16 KB



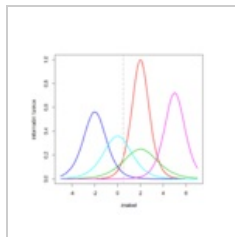
Histogram odlehl...  
1,200 × 1,200; 17 KB



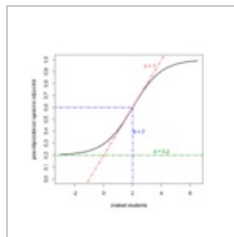
Hure vs lepe rozli...  
1,200 × 1,200; 17 KB



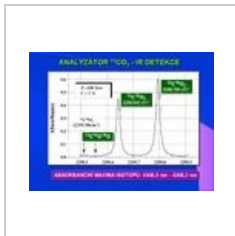
Incidence a mort...  
667 × 503; 62 KB



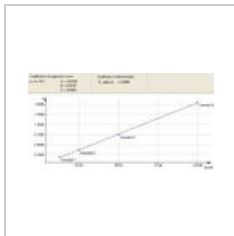
Informacni funkci...  
1,200 × 1,200; 19 KB



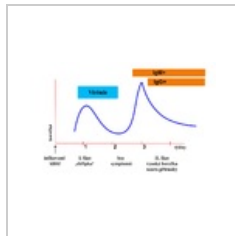
Interpretace para...  
1,200 × 1,200; 17 KB



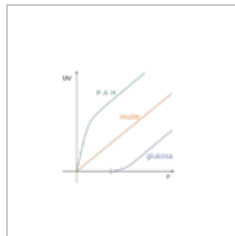
IR detekce.jpg  
720 × 540; 62 KB



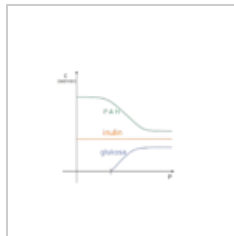
Kalibracni krivka...  
644 × 334; 23 KB



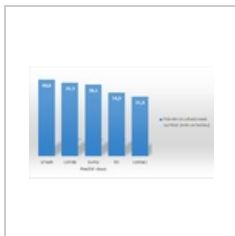
Klišťová-encefalit...  
2,000 × 1,276; 92 KB



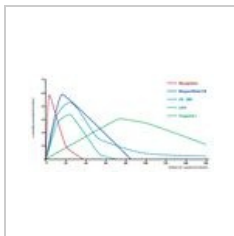
Koncentrace v m...  
1,052 × 744; 12 KB



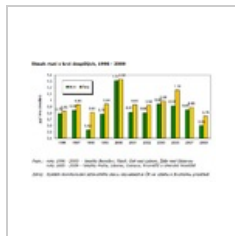
Koncentrace v pl...  
1,052 × 744; 14 KB



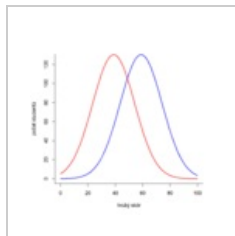
Loftus and palme...  
478 × 290; 11 KB



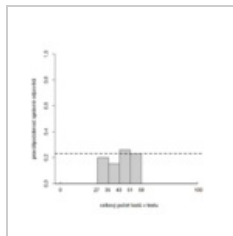
Markery-IM.jpg  
2,357 × 1,237; 297 KB



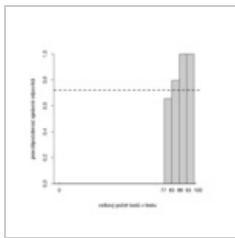
Obsah rtuti v krvi...  
925 × 598; 59 KB



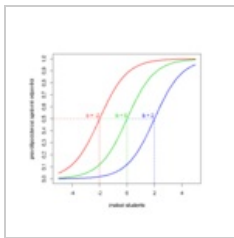
Obtiznejši vs sna...  
1,200 × 1,200; 18 KB



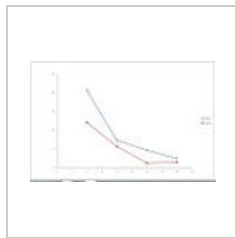
Obtiznost položk...  
1,200 × 1,200; 50 KB



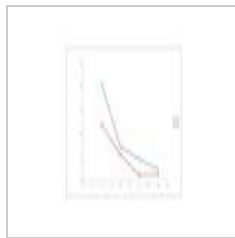
Obtiznost položk...  
1,200 × 1,200; 50 KB



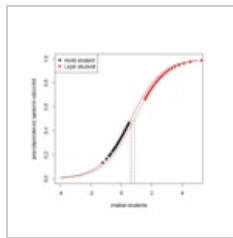
Obtiznost v 1par...  
1,200 × 1,200; 16 KB



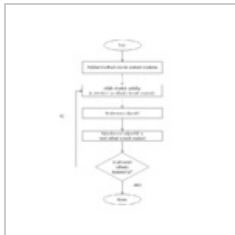
Ochrana vzdalen...  
997 × 649; 40 KB



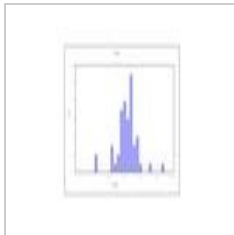
Ochrana vzdálen...  
1,239 × 1,754; 14 KB



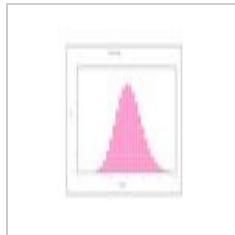
Odhad obtiznosti...  
1,200 × 1,200; 60 KB



Pocitacove adapt...  
578 × 720; 10 KB



Poisson 1.pdf  
1,239 × 1,754; 13 KB



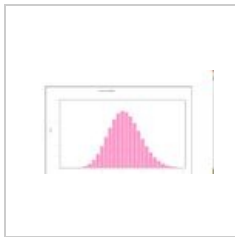
Poisson 2.pdf  
1,239 × 1,754; 15 KB



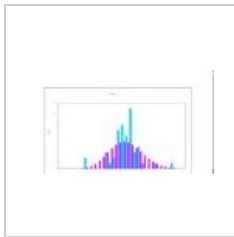
Poisson 3.pdf  
1,239 × 1,754; 15 KB



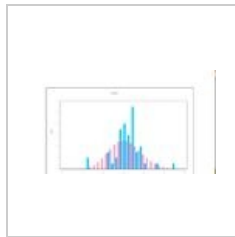
Poisson 4.pdf  
1,239 × 1,754; 15 KB



Poisson ideal.jpg  
1,366 × 768; 58 KB



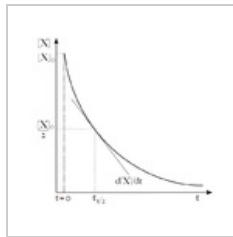
Poisson korekce.j...  
1,366 × 768; 65 KB



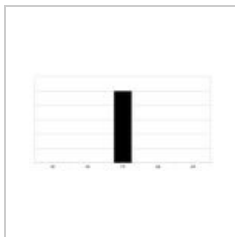
Poisson prolnutí.j...  
1,366 × 768; 60 KB



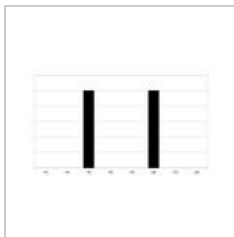
Poisson rozdeleni...  
1,366 × 768; 54 KB



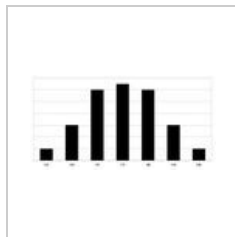
Poločas.png  
638 × 589; 15 KB



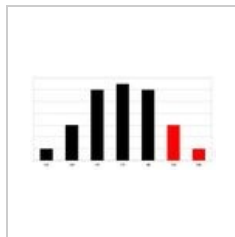
Polygenní dědičn...  
744 × 398; 25 KB



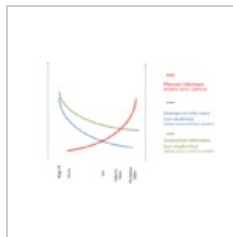
Polygenní dědičn...  
767 × 449; 33 KB



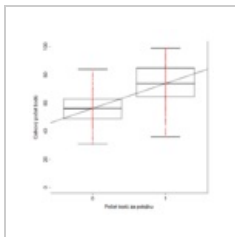
Polygenní dědičn...  
747 × 379; 34 KB



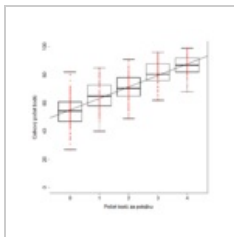
Polygenní dědičn...  
747 × 379; 19 KB



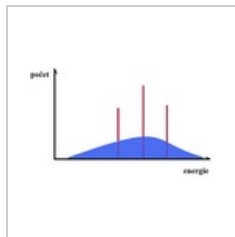
Presnost informa...  
650 × 432; 39 KB



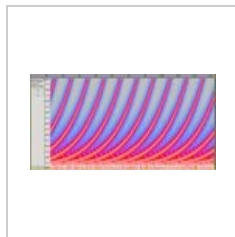
RIR binarni položk...  
1,200 × 1,200; 50 KB



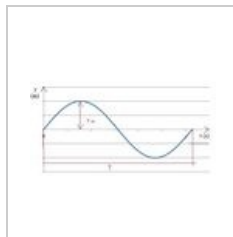
RIR bodovana pol...  
1,200 × 1,200; 58 KB



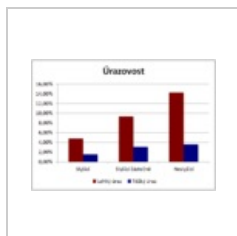
RTGspektrum.png  
330 × 196; 6 KB



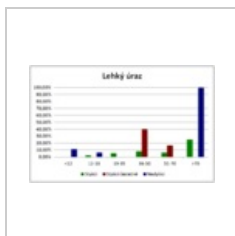
Sheparduv ton.jpg  
800 × 413; 68 KB



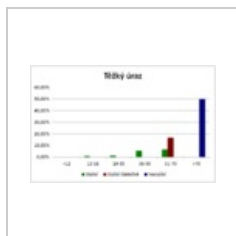
Sinusoida.jpg  
472 × 275; 13 KB



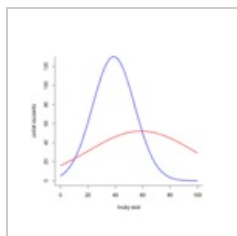
Sluch chodce v d...  
784 × 556; 23 KB



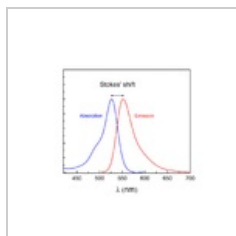
Sluch chodce v d...  
888 × 560; 27 KB



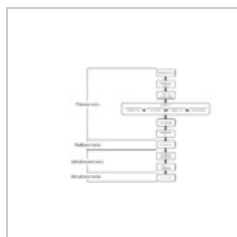
Sluch chodce v d...  
885 × 558; 23 KB



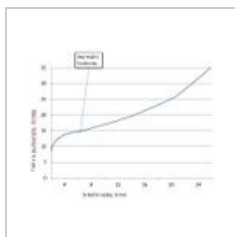
Snazší hůře rozlis...  
1,200 × 1,200; 16 KB



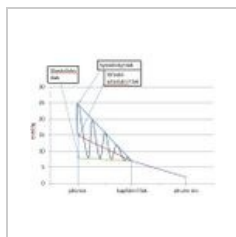
Stokes posuv.png  
1,280 × 989; 60 KB



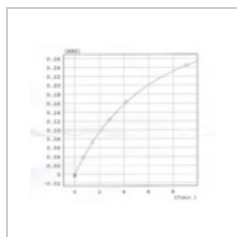
Testy.png  
1,512 × 945; 23 KB



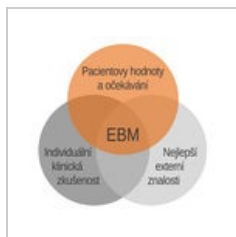
Tlak.JPG  
570 × 469; 31 KB



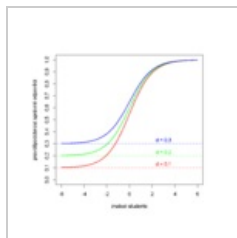
Tlaky.JPG  
529 × 411; 34 KB



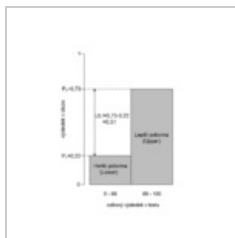
Transferin křivka....  
620 × 529; 228 KB



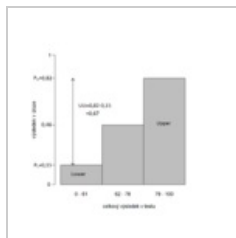
Tri-slozky-EBM.jpg  
1,978 × 1,901; 284 KB



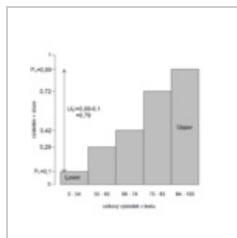
Uhadnutelnost v ...  
1,200 × 1,200; 13 KB



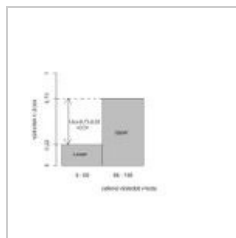
ULI 2 kategorie.p...  
825 × 1,190; 45 KB



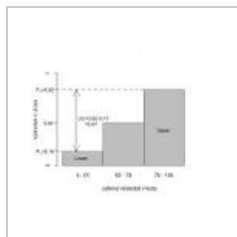
ULI 3 kategorie.p...  
1,200 × 1,200; 50 KB



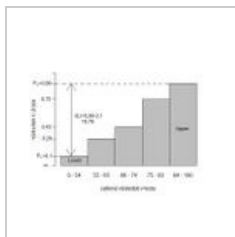
ULI 5 kategorií.png  
1,200 × 1,200; 55 KB



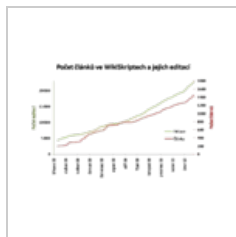
ULI2.jpeg  
550 × 450; 23 KB



ULI3.jpeg  
550 × 450; 27 KB



ULI5.jpeg  
550 × 450; 32 KB



Články a editace ...  
972 × 675; 29 KB