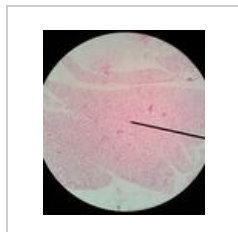


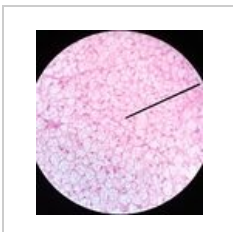
Kategorie:Poznávčka - Histologie - Obecná histologie

Media in category "Poznávčka - Histologie - Obecná histologie"

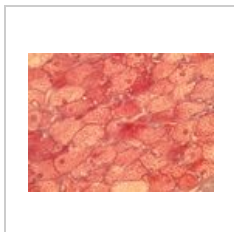
The following 43 files are in this category, out of 43 total.



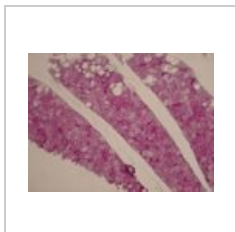
22 a Hnědý tuk 1...
1,920 × 2,196;
1.33 MB



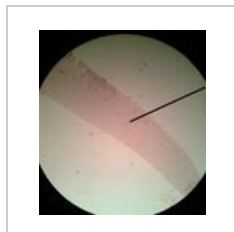
22 b Hnědý tuk 4...
1,920 × 2,137;
1.16 MB



22 c Hnědý tuk 4...
2,592 × 1,944;
2.83 MB



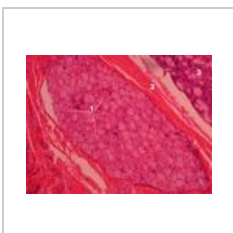
22 c Hnědý tuk .jpg
1,037 × 778; 233
KB



24 Kloubní chrup...
1,920 × 2,132; 772
KB



27 Desmogenni ...
1,920 × 2,220; 912
KB



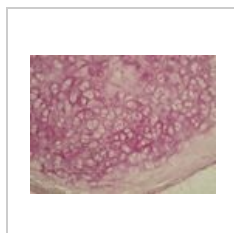
Autonomní gangl...
2,592 × 1,944;
1.88 MB



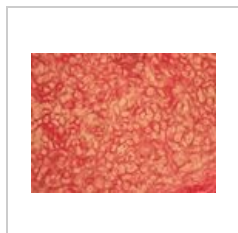
Bílá tuková tkáň ...
1,037 × 778; 106
KB



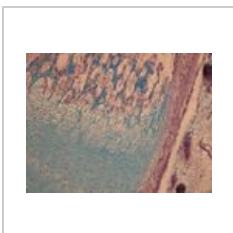
Bílá tuková tkáň ...
1,037 × 778; 82
KB



Elastická chrupa...
1,037 × 778; 207
KB



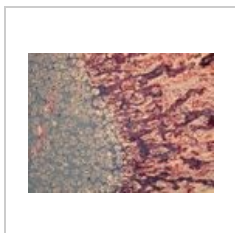
Elastická chrupa...
1,037 × 778; 231
KB



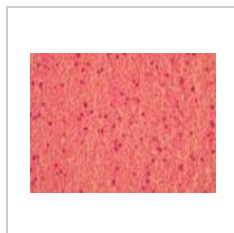
Enchondrální osif...
1,037 × 778; 260
KB



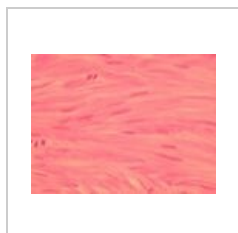
Enchondrální osif...
1,037 × 778; 291
KB



Enchondrální osif...
1,037 × 778; 333
KB



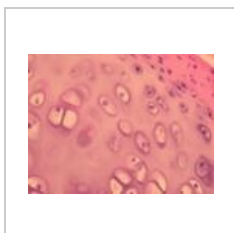
Hladký sval 3.jpg
1,037 × 778; 213
KB



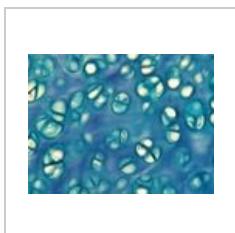
Hladký sval 4.jpg
1,037 × 778; 120
KB



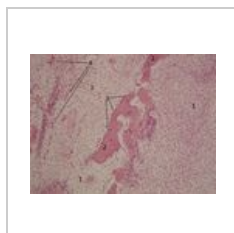
Hladký sval.jpg
1,037 × 778; 149
KB



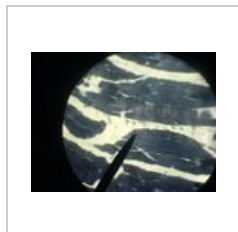
Hyalinní chrupav...
1,037 × 778; 115
KB



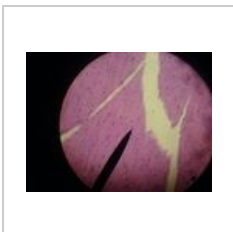
Hyalinní chrupav...
1,037 × 778; 167
KB



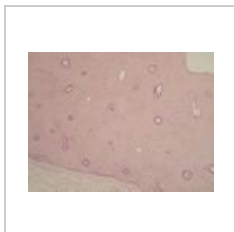
Intramembranos...
2,592 × 1,944;
1.73 MB



Kosterní sval4 - ...
1,632 × 1,224; 413
KB



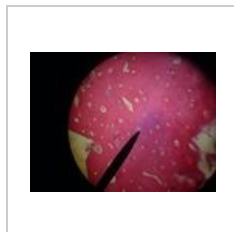
Kosterní sval5 - ...
1,632 × 1,224; 392
KB



Lamelosní kost 2...
1,037 × 778; 128
KB



Lamelosní kost 4...
1,037 × 778; 160
KB



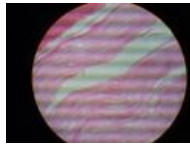
Lamelová kost ko...
1,632 × 1,224; 429
KB



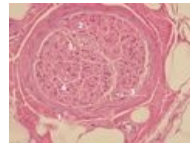
Lamelová kost sp...
1,632 × 1,224; 438
KB



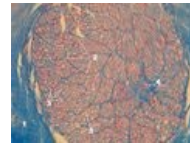
Myokard3.JPG
1,632 × 1,224; 433
KB



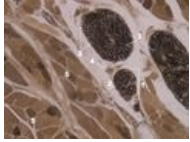
Nerv podelne 4.jpg
640 × 480; 69 KB



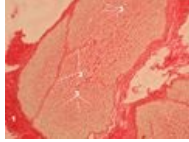
Periferní nerv 10 ...
2,592 × 1,944;
1.45 MB



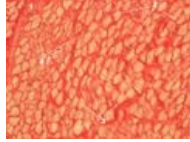
Periferní nerv 6 -...
2,592 × 1,944;
1.78 MB



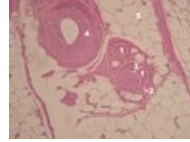
Periferní nerv 8.jpg
2,592 × 1,944;
1.52 MB



Periferní nerv2 - ...
2,592 × 1,944; 1.7
MB



Periferní nerv3 - ...
2,592 × 1,944;
1.46 MB



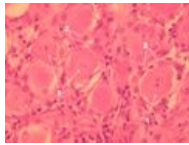
Periferní nerv9 - ...
2,592 × 1,944;
1.25 MB



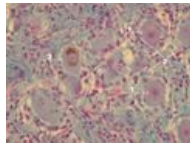
Primární osifikač...
1,037 × 778; 244
KB



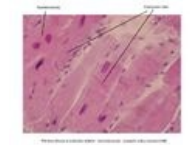
Spinální ganglion...
2,592 × 1,944;
1.78 MB



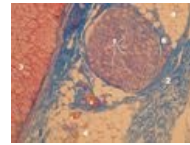
Spinální ganglion...
2,592 × 1,944;
1.21 MB



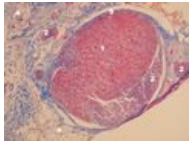
Spinální ganglion...
2,592 × 1,944;
1.44 MB



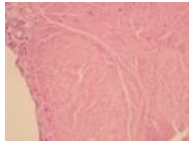
Srdeční svalovina...
3,046 × 2,454; 631
KB



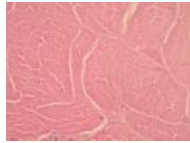
Vegetativní gang...
2,592 × 1,944;
1.61 MB



Vegetativní gang...
2,592 × 1,944;
1.65 MB



Šlacha 2.jpg
1,037 × 778; 170
KB



Šlachalf3.jpg
1,037 × 778; 187
KB