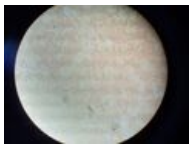
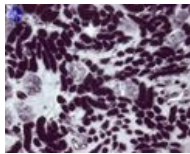


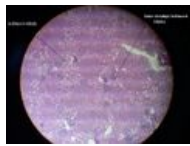
Portál:Vylučovací systém



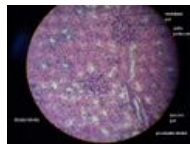
Ledvina 1
(alkalická
fosfatáza)



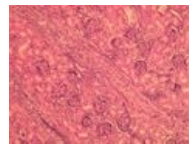
Ledvina 2
(alkalická
fosfatáza)



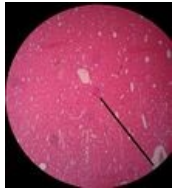
Ledvina 3



Ledvina 4



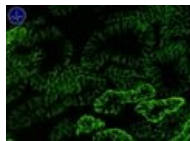
Ledvina 5



Ledvina 6



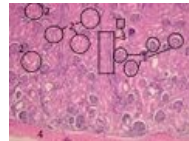
Ledvina 7



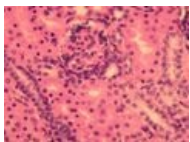
Ledvina 8



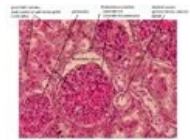
Ledvina 9 (kůra)



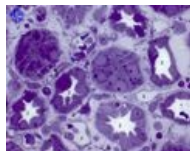
Ledvina 10 (kůra)



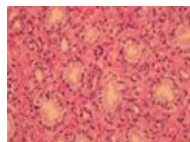
Ledvina 11 (kůra)



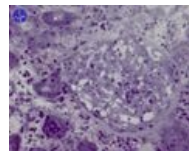
Ledvina 12 (kůra)



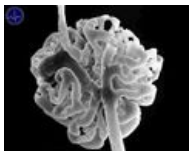
Proximální a
distální kanálek
ledviny



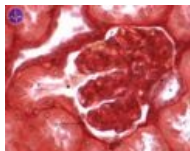
Sběrací kanálek
ledviny



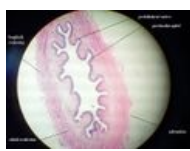
Glomerulus 1



Glomerulus 2



Macula densa



Močovod 1



Močovod 2



Močovod 3



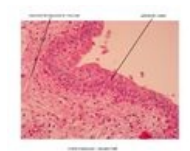
Močovod 4



Močovod 5



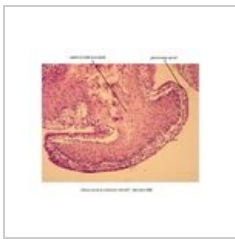
Močovod 6 (detail)



Močovod 7 (detail)



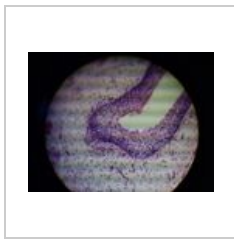
Močový měchýř 1



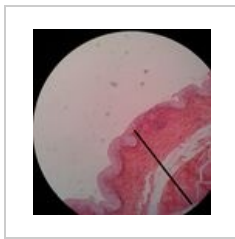
Močový měchýř 2



Močový měchýř 3



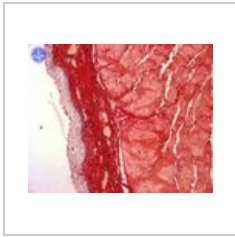
Močový měchýř 4



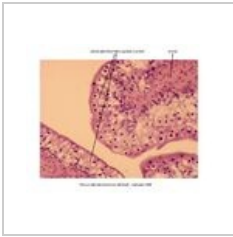
Močový měchýř 5



Močový měchýř 6



Močový měchýř 7



Močový měchýř
(detail epitelu)



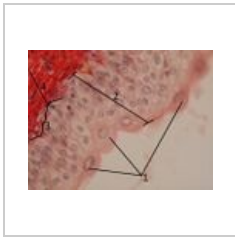
Urotel 1



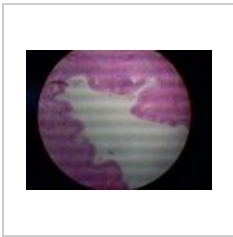
Urotel 2



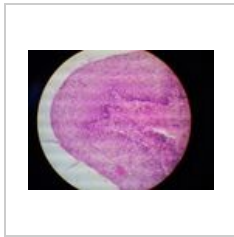
Urotel 3



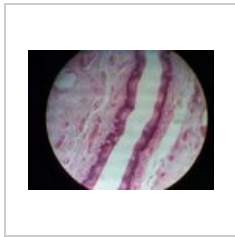
Urotel 4



Urethra 1



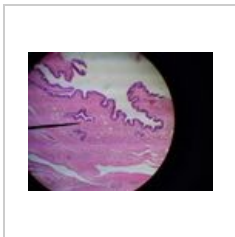
Urethra 2



Urethra masculina
- glans penis



Pars spongiosa
urethrae 1



Pars spongiosa
urethrae 2