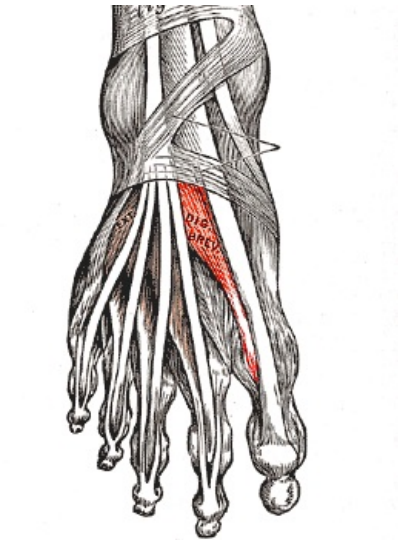


Soubor:Gray437-Musculus extensor hallucis brevis.png



This image can contain annotations.
Move the mouse over the image to display.
No higher resolution available.

Gray437-Musculus_extensor_hallucis_brevis.png (260 × 353 pixels, file size: 50 KB, MIME type: image/png)

Open in Media Viewer

This file is from Wikimedia Commons and may be used by other projects. The description on its file description page there is shown below.

Popis kartičky Musculus extensor hallucis brevis

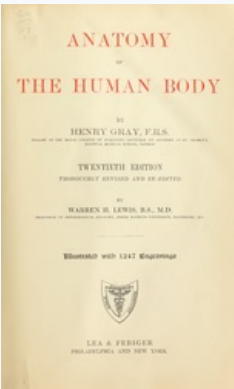
Summary

Description	English: Gray437-Musculus_extensor_hallucis_brevis Deutsch: M. extensor hallucis brevis rot markiert.
Plate	437
Date	before 1858
Source	<ul style="list-style-type: none">Henry Gray (1918) <i>Anatomy of the Human Body</i> (See "Book" section below)Bartleby.com: Gray's Anatomy (http://www.bartleby.com/107/), Plate 437 (http://www.bartleby.com/107/illus437.html)
Author	<div>Henry Vandyke Carter (1831-1897) </div> <div><ul style="list-style-type: none">Bemoelial</div>

Book

Henry Gray: Gray's Anatomy (20th edition)	
Author	Henry Gray (1827-1861)
Editor	Revised by Warren H. Lewis
Illustrator	Henry Vandyke Carter (1831-1897)
Title	Anatomy of the Human Body

Edition	20
Publisher	Lea & Febiger
Object type	version, edition or translation
Page overview	list of all the plates
Language	English
Publication date	1918
Place of publication	Philadelphia / New York City
Source	Bartleby (http://www.bartleby.com/107/)




This work is in the **public domain** in its country of origin and other countries and areas where the copyright term is the author's **life plus 100 years or fewer**.

This work is in the **public domain** in the United States because it was published (or registered with the U.S. Copyright Office) before January 1, 1928.

This file has been identified as being free of known restrictions under copyright law, including all related and neighboring rights. (<https://creativecommons.org/publicdomain/mark/1.0/deed.en>)

File history

Click on a date/time to view the file as it appeared at that time.

	Date/Time	Thumbnail	Dimensions	User	Comment
current	19:52, 22 July 2012		260 × 353 (50 KB)	wikimediacommons>Bemoeial1	{{Information Description ={{en 1=Gray437-Musculus_extensor_hallucis_brevis}} Source ={{Gray's Anatomy plate}} Author =Bemoeial Date = Permission =PD other_versions = }}

File usage

The following 2 pages use this file:

- Musculus extensor hallucis brevis
- Svaly dolní končetiny (tabulka)

Metadata

This file contains additional information, probably added from the digital camera or scanner used to create or digitize it.

If the file has been modified from its original state, some details may not fully reflect the modified file.