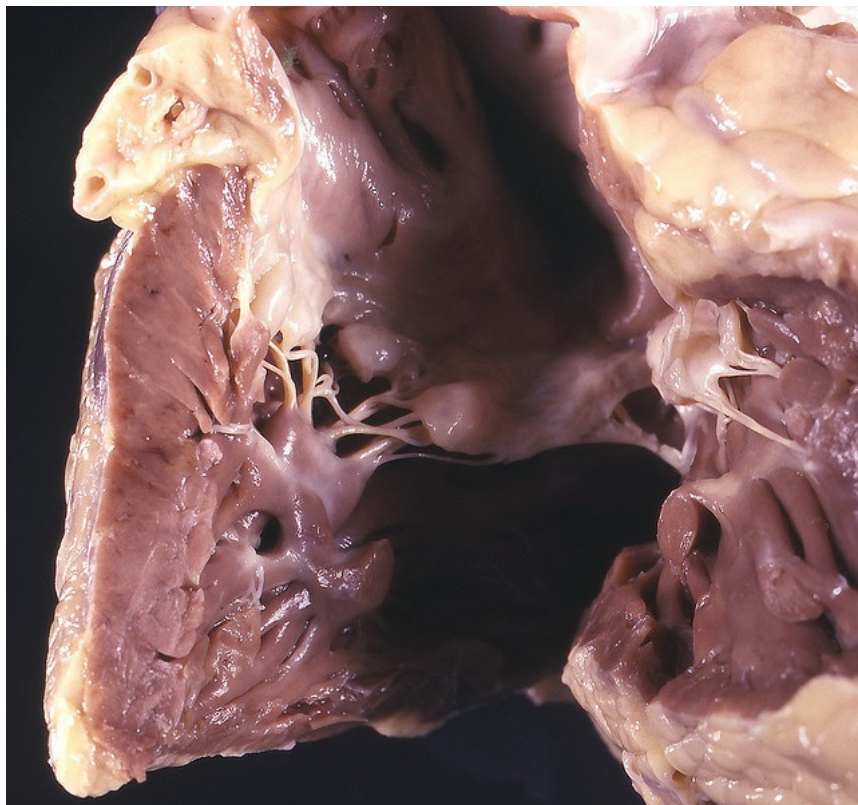


# Soubor:Hypertrofie PK 2.jpg



This image can contain annotations.  
Move the mouse over the image to display.  
No higher resolution available.

Hypertrofie\_PK\_2.jpg (640 × 599 pixels, file size: 129 KB, MIME type: image/jpeg)

 **Open in Media Viewer** 

**Popis** Heart: cor pulmonale- right ventricular hypertrophy

**Zdroj** [http://www.flickr.com/photos/pulmonary\\_pathology/4351163511/in/photostream/](http://www.flickr.com/photos/pulmonary_pathology/4351163511/in/photostream/)

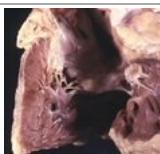
**Datum** *nezadáno*

**Autor** Yale Rosen, M.D.

**Licence** NonCommercial-NoDerivs 3.0 Unported (CC BY-NC-ND 3.0)

## File history

Click on a date/time to view the file as it appeared at that time.

	Date/Time	Thumbnail	Dimensions	User	Comment
current	<b>17:23, 28 October 2011</b>		640 × 599 (129 KB)	OK (talk   contribs)	{{Soubor  popis = Heart: cor pulmonale- right ventricular hypertrophy  zdroj = http://www.flickr.com/photos/pulmonary_pathology/4351163511/in/photostream/  datum =  autor = Yale Rosen, M.D.  licence = {{Zpracovat doplnit licenci}} }} [[Kategorie:pneumolo

You cannot overwrite this file.

## File usage

The following page uses this file:

- Cor pulmonale

# Metadata

This file contains additional information, probably added from the digital camera or scanner used to create or digitize it.

If the file has been modified from its original state, some details may not fully reflect the modified file.