

Uživatel:Patmar

RNDr. Patrícia Martinková, Ph.D.

Institute of Computer Science, Academy of Sciences of the Czech Republic
Pod Vodárenskou věží 2, 182 07 Prague 8, Czech Republic
tel.: 2 6605 3400,

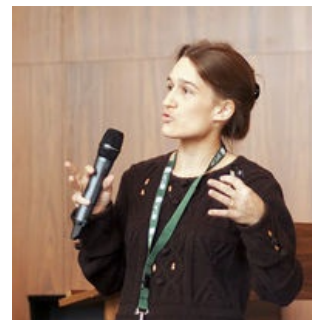
e-mail: martinkova(at)cs.cas.cz

web page: <http://www.cs.cas.cz/martinkova> (<http://www.cs.cas.cz/martinkova>)

Fulbright-Masaryk Fellow at University of Washington

e-mail: patmar(at)uw.edu

web page: <http://faculty.washington.edu/patmar> (<http://faculty.washington.edu/patmar>)



Interests

psychometrics and analyses of educational data, especially reliability, item response theory, item and test fairness, etc.

biostatistics and analyses of medical data

Selected publications

1. Řasová K, **Martinková P**, Vyskotová J, Šedová M. Assessment set for evaluation of clinical outcomes in multiple sclerosis - psychometric properties. Patient Related Outcome Measures, 3, pp. 59-70, 2012, online (<http://www.dovepress.com/getfile.php?fileID=14208>)
2. Štuka Č, **Martinková P**, Zvára K, Zvárová J. The prediction and probability for successful completion in medical study based on tests and pre-admission grades. The New Educational Review, 28, pp. 138 -152, 2012, online (http://www.educationalrev.us.edu.pl/vol/tner_2_2012.pdf)
3. Řasová K, Kalistová H, Kučera P, Juzová O, Zimová D, Medová E, Doležil D, Jandová D, Tintěra J, Ibrahim I, Zvára K, Bičíková M, **Martinková P**. Physiotherapy as an immunoactive therapy? A pilot study. Neuroendocrinology Letters, 33(1), pp. 67-75, 2012.
4. Ibrahim I, Tintěra J, Škoch A, Jířů F, Hlušík P, **Martinková P**, Zvára K, Řasová K. Fractional anisotropy and mean diffusivity in the corpus callosum of patients with multiple sclerosis: the effect of physiotherapy. Neuroradiology, 53(11), pp. 917-26, 2011, online (<http://link.springer.com/content/pdf/10.1007/s00234-011-0879-6>)
5. **Martinková P**, Zvára K. Reliability of Composite Dichotomous Measurements. European Journal for Biomedical Informatics, 6(2), pp. 14-23, 2010, in english (<http://www.ejbi.org/en/ejbi/article/77-en-reliability-of-composite-dichotomous-measurements.html>), in czech (<http://www.ejbi.org/en/ejbi/article/77-cs-spolehlivost-sl-ozenych-dichotomnich-mereni.html>).
6. Řasová K, Brandejský P, Tintěra J, Krásenský J, Zimová D, Medová E, Herbenová A, Kalistová H, Jech R, Řasová M, Zemanová P, Zeman J, Ibrahim I, **Martinková P**, Doležil D, Jandová D. Bimanual Tandem Motor Task with Multiple Sclerosis in Functional Magnetic Resonance Imaging: Effect of Physiotherapeutic Techniques - a Pilot Study. Česká a Slovenská neurologie a neurochirurgie, 72(4), pp. 350-358, 2009.
7. **Martinková P**, Zvára K. Reliability in the Rasch Model. Kybernetika, 43(3), pp. 315-26, 2007, online (http://dml.cz/bitstream/handle/10338.dmlcz/135776/Kybernetika_43-2007-3_4.pdf).
8. Martinková P, Zvára jr. K, Zvárová J, Zvára K. The New Features of the Exam Evaluation System and Reliability of Its Fixed Tests. Methods of Information in Medicine, 45(2), pp. 310-315, 2006.
9. Řasová K, Havrdová E, Brandejský P, Zálišová M, Foubíková B, **Martinková P**. Comparison of the Influence of Different Rehabilitation Programmes on Clinical, Spirometric and Spiroergometric Parameters in Patients with Multiple Sclerosis. Multiple Sclerosis, 12(2), pp. 227-234, 2006.
10. Vášková M, Mejstříková E, Kalina T, **Martinková P**, Omelka M, Trka J, Starý J, Hrušák O. Transfer of Genomics Information to Flow Cytometry: Expression of CD27 and CD44 Discriminates Subtypes of Acute Lymphoblastic Leukemia. Leukemia, 19(5), pp. 876-878, 2005, online (<http://www.nature.com/leu/journal/v19/n5/full/2403706a.html>).
11. Řasová K, Krásenský J, Havrdová E, Obenberger J, Seidel Z, Doležal O, **Rexová P**, Zálišová M. Is it Possible to Actively and Purposely make use of Plasticity and Adaptability in the Neurorehabilitation Treatment of Multiple Sclerosis Patients? A Pilot Project. Clinical Rehabilitation, 19(2), pp. 170-181, 2005.