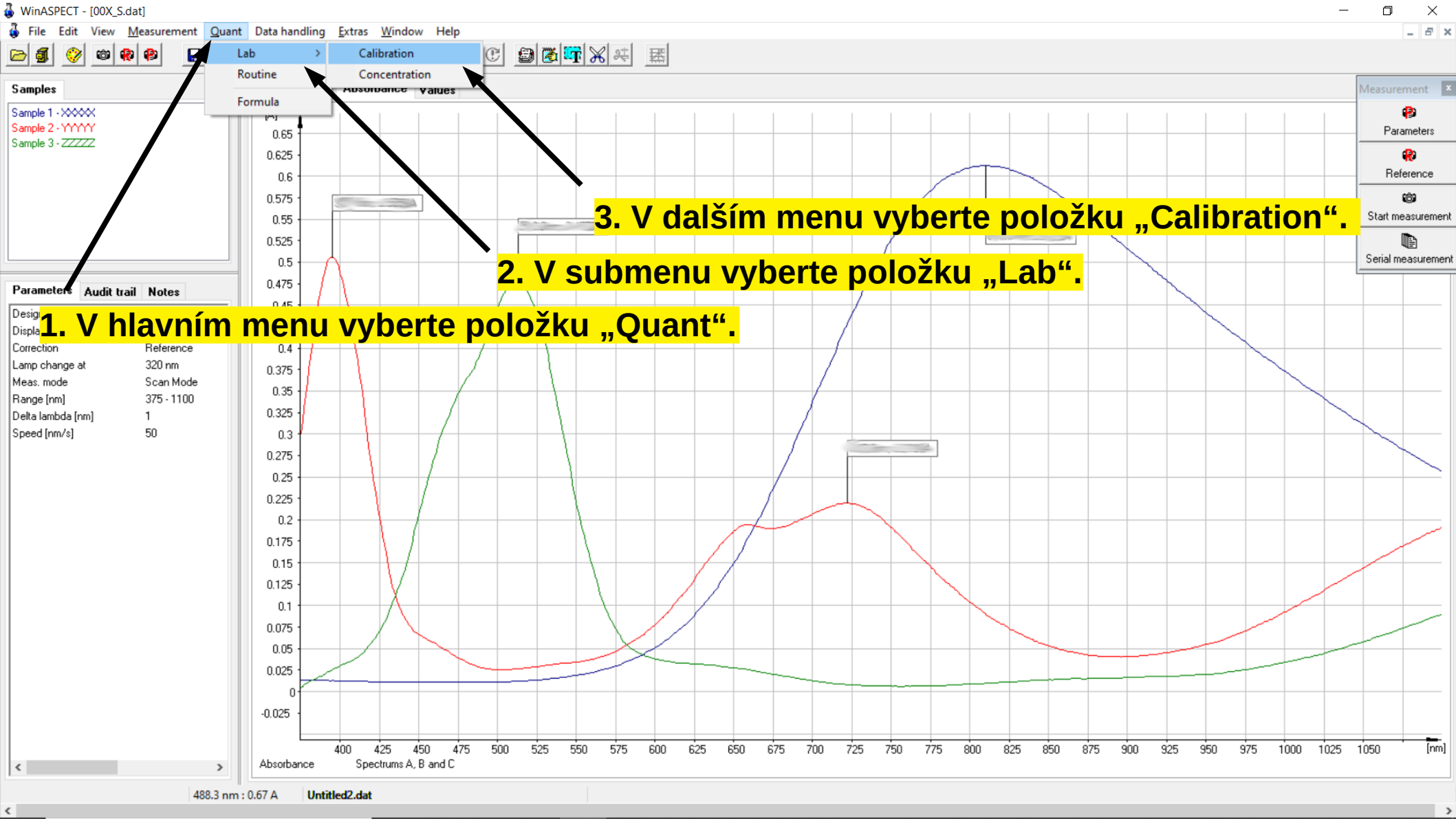




Spektrofotometrie

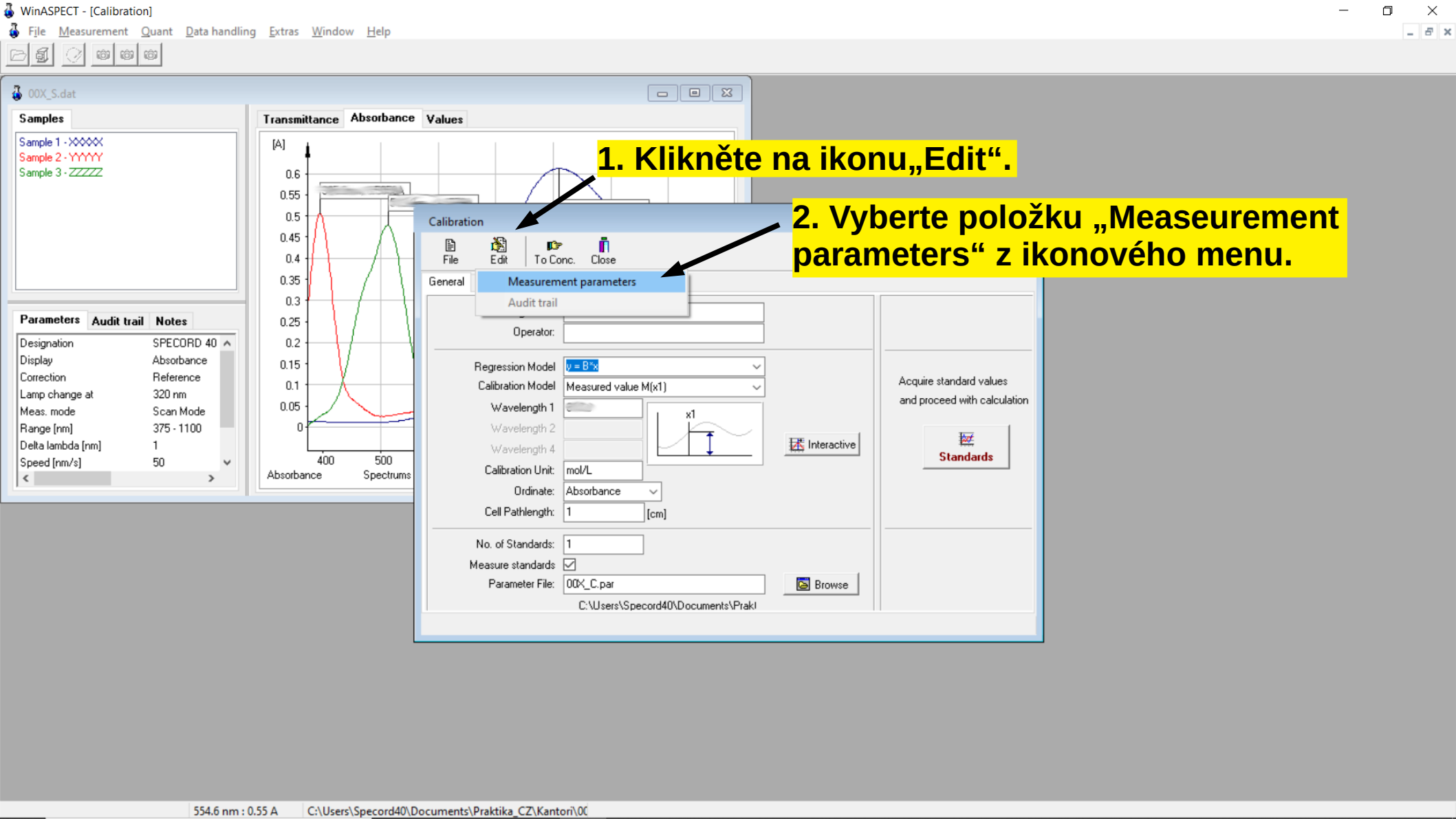
Stanovení koncentrace vzorku.



1. V hlavním menu vyberte položku „Quant“.

2. V submenu vyberte položku „Lab“.

3. V dalším menu vyberte položku „Calibration“.



1. Klikněte na ikonu „Edit“.

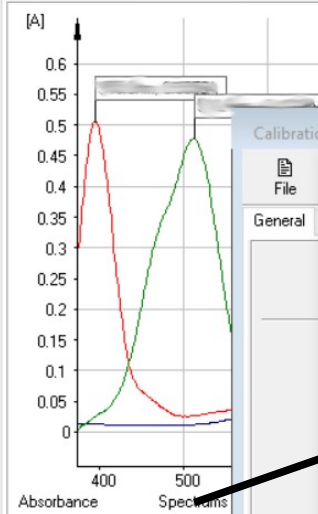
2. Vyberte položku „Measurement parameters“ z ikonového menu.

00X_S.dat

Samples

- Sample 1 - XXXXX
- Sample 2 - YYYYY
- Sample 3 - ZZZZZ

Transmittance Absorbance Values



Parameters Audit trail Notes

Designation	SPECORD 40
Display	Absorbance
Correction	Reference
Lamp change at	320 nm
Meas. mode	Scan Mode
Range [nm]	375 - 1100
Delta lambda [nm]	1
Speed [nm/s]	50

V podokně „Specord 40“ vyberte panel „Settings“ a nastavte odpovídající hodnoty.

Calibration

Specord 40 - C:\Users\Specord40\Documents\Praktika_CZ\Kantori\00X_C.par

File

General

OK Cancel New Open Save Save as... Help Print

Settings Device Mode Accessories

Title Calibration

Operator 00X

Cycle Mode

- None
- Manual
- Automatic
- Time controlled

Number 3

Interval time [s] 1

Display

- Transmittance
- Absorbance
- Energy
- Reflectance

Min: 0

Max: 3

Correction

- No
- Standard
- Reference
- Special

Open

Title: Calibration

Operator: Označení týmu

Cycle Node: None

Display: Absorbance

Correction: Reference

00X_S.dat

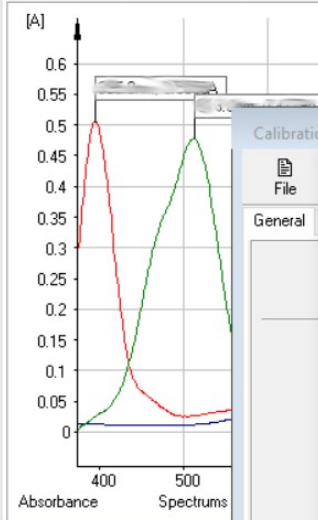
Samples

- Sample 1 - XXXXX
- Sample 2 - YYYYY
- Sample 3 - ZZZZZ

Parameters Audit trail Notes

Designation	SPECORD 40
Display	Absorbance
Correction	Reference
Lamp change at	320 nm
Meas. mode	Scan Mode
Range [nm]	375 - 1100
Delta lambda [nm]	1
Speed [nm/s]	50

Transmittance Absorbance Values



V dalším kroku v podokně „Specord 40“ vyberte panel “Mode” a nastavte odpovídající hodnoty.

Calibration

Specord 40 - C:\Users\Specord40\Documents\Praktika_CZ\Kantor\00X_C.par

File

General

OK Cancel

Settings Device **Mode** Accessories

Meas. mode Wavelengths

Wavelengths

1	
---	--

Add Edit Remove

Integration time [s] 0.2

Meas. mode: *Wavelengths*

Zde vyplňte vlnovou délkou pro maximální absorpci vzorku A.

Pro vložení a potvrzení hodnoty vlnové délky použij tlačítko „Edit“.

00X_S.dat

Samples

- Sample 1 - XXXXX
- Sample 2 - YYYYY
- Sample 3 - ZZZZZ

Parameters Audit trail Notes

Designation	SPECORD 40
Display	Absorbance
Correction	Reference
Lamp change at	320 nm
Meas. mode	Scan Mode
Range [nm]	375 - 1100
Delta lambda [nm]	1
Speed [nm/s]	50

Transmittance Absorbance Values

Absorbance Spectrums

Klikněte na ikonu „Save as...“.

Calibration

Specord 40 - C:\Users\Specord40\Documents\Praktika_CZ\Kanton\00X_C.par

File

General

OK Cancel New Open Save Save as... Help Print

Settings Device Mode Accessories

Meas. mode Wavelengths

Wavelengths

1	Add
---	-----

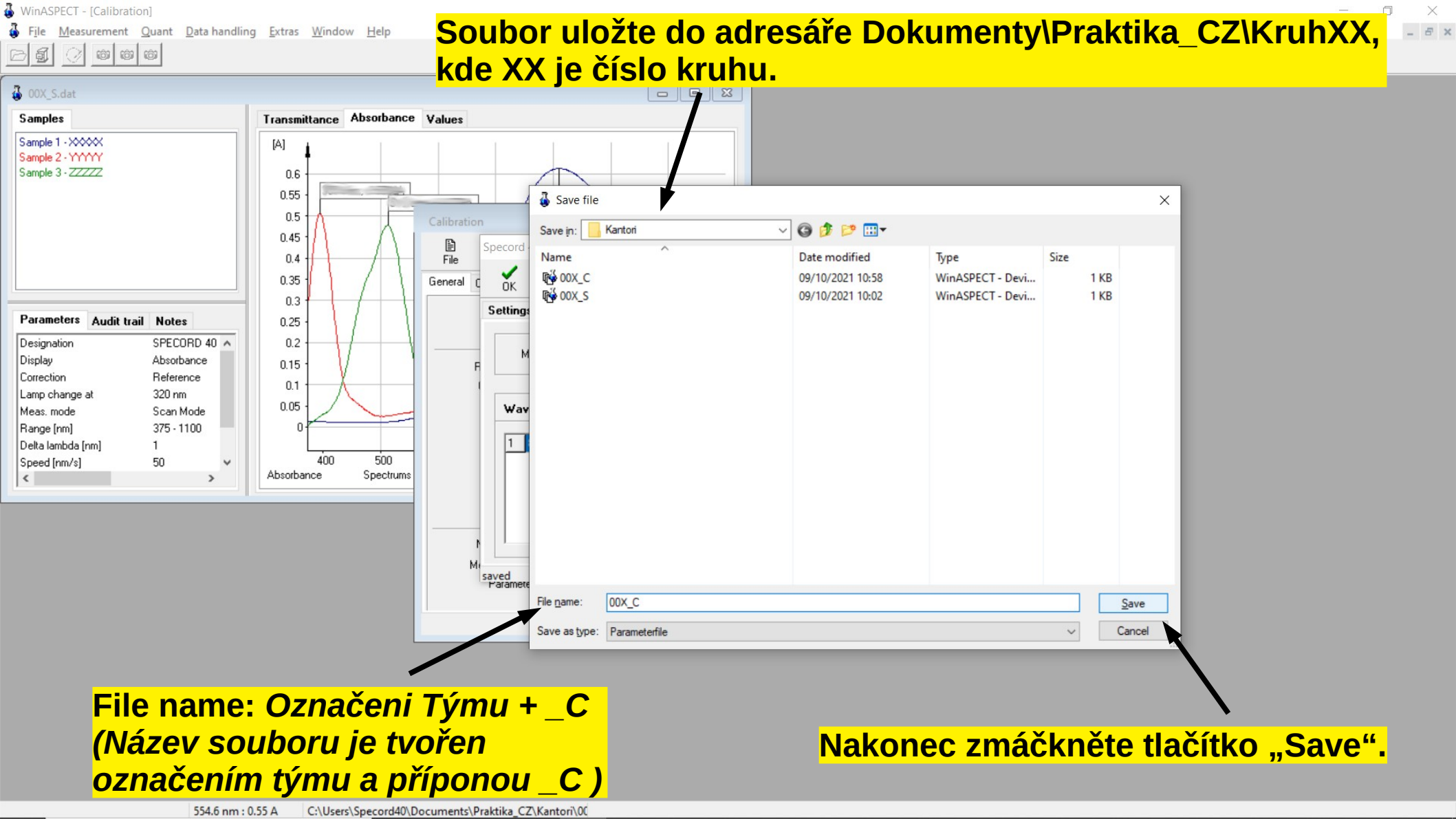
Edit Remove

Integration time [s] 0.2

saved Parameter file: 00X_C.par

Save as... Browse

C:\Users\Specord40\Documents\Praktika_CZ\Kanton\00X_C.par



Soubor uložte do adresáře Dokumenty\Praktika_CZ\KruhXX, kde XX je číslo kruhu.

File name: Označení Týmu + _C (Název souboru je tvořen označením týmu a příponou _C)

Nakonec zmáčkněte tlačítko „Save“.

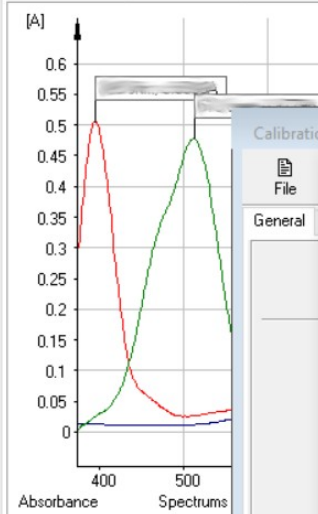


00X_S.dat

Samples	
Sample 1 - XXXXX	
Sample 2 - YYYYY	
Sample 3 - ZZZZZ	

Parameters	Audit trail	Notes
Designation	SPECORD 40	
Display	Absorbance	
Correction	Reference	
Lamp change at	320 nm	
Meas. mode	Scan Mode	
Range [nm]	375 - 1100	
Delta lambda [nm]	1	
Speed [nm/s]	50	

Transmittance Absorbance Values



Klikněte na ikonu „OK“.

Calibration

Specord 40 (C:\Users\Specord40\Documents\Praktika_CZ\Kantori\00X_C.par)

File: OK Cancel New Open Save Save as... Help Print

Settings Device Mode Accessories

Meas. mode: Wavelengths

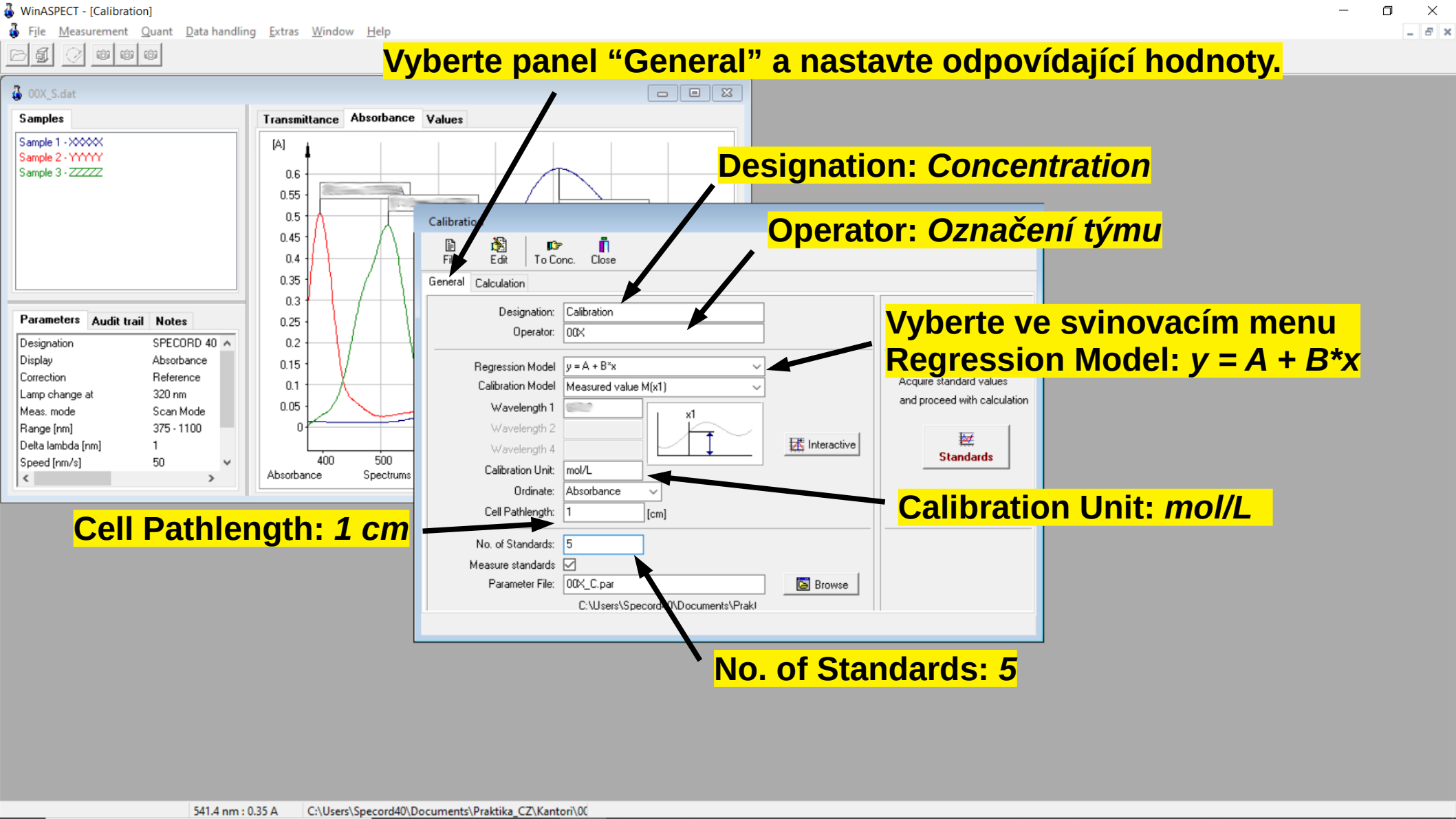
Wavelengths

1	Add
	Edit
	Remove

Integration time [s]: 0.2

Parameter file: 00X_C.par

OK



Vyberte panel "General" a nastavte odpovídající hodnoty.

Designation: Concentration

Operator: Označení týmu

**Vyberte ve svinovacím menu
Regression Model: $y = A + B \cdot x$**

Calibration Unit: mol/L

Cell Pathlength: 1 cm

No. of Standards: 5



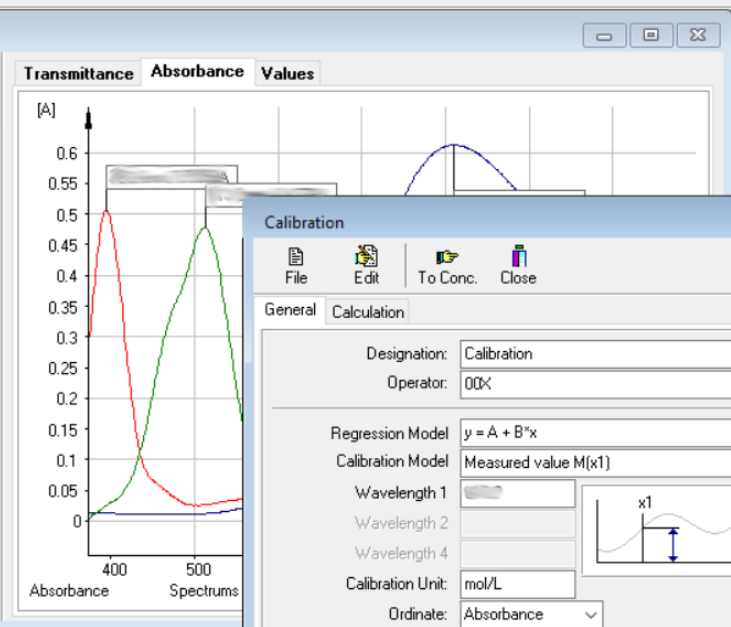
00X_S.dat

Samples

- Sample 1 - XXXXX
- Sample 2 - YYYYY
- Sample 3 - ZZZZZ

Parameters **Audit trail** **Notes**

Designation	SPECORD 40
Display	Absorbance
Correction	Reference
Lamp change at	320 nm
Meas. mode	Scan Mode
Range [nm]	375 - 1100
Delta lambda [nm]	1
Speed [nm/s]	50



Calibration

File Edit To Conc. Close

General Calculation

Designation: Calibration
Operator: 00X

Regression Model: $y = A + B \cdot x$
Calibration Model: Measured value M(x1)

Wavelength 1: []
Wavelength 2: []
Wavelength 4: []

Calibration Unit: mol/L
Ordinate: Absorbance
Cell Pathlength: 1 [cm]

No. of Standards: 5
Measure standards:
Parameter File: 00X_C.par [Browse]
C:\Users\Specord40\Documents\Prakt

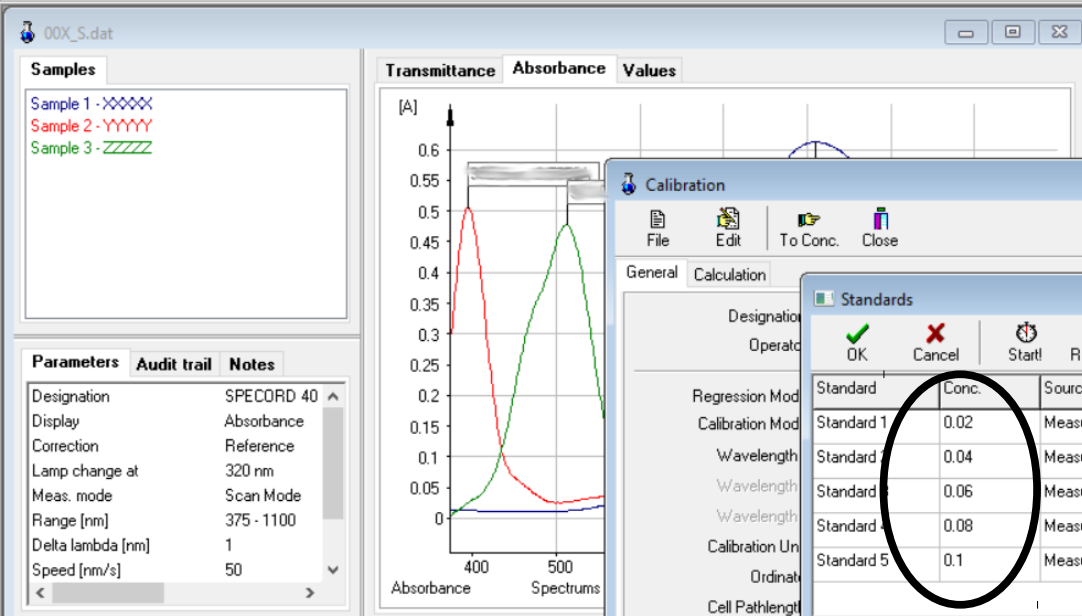
Interactive

Acquire standard values and proceed with calculation

Standards

Klikněte na tlačítko „Standards“.





Calibration

File Edit To Conc. Close

General Calculation

Standards

Standard	Conc.	Source	A
Standard 1	0.02	Measure: 00X_C.par	0.0000
Standard	0.04	Measure: 00X_C.par	0.0000
Standard	0.06	Measure: 00X_C.par	0.0000
Standard	0.08	Measure: 00X_C.par	0.0000
Standard 5	0.1	Measure: 00X_C.par	0.0000

Selected standard: Standard 1 (De)activate

Measure: 00X_C.par Source

Opište koncentrace jednotlivých standardů A1, A2, A3, A4 a A5.



00X_S.dat

Samples

- Sample 1 - XXXXX
- Sample 2 - YYYYY
- Sample 3 - ZZZZZ

Parameters Audit trail Notes

Designation	SPECORD 40
Display	Absorbance
Correction	Reference
Lamp change at	320 nm
Meas. mode	Scan Mode
Range [nm]	375 - 1100
Delta lambda [nm]	1
Speed [nm/s]	50

Transmittance Absorbance Values

Vložte referenční vzorek a klikněte na ikonu „Reference“.

Calibration

File Edit To Conc. Close

General Calculation

Standards

OK Cancel Start Reference Statistics

Standard	Conc.	Source	A
Standard 1	0.02	Measure: 00X_C.par	0.0000
Standard 2	0.04	Measure: 00X_C.par	0.0000
Standard 3	0.06	Measure: 00X_C.par	0.0000
Standard 4	0.08	Measure: 00X_C.par	0.0000
Standard 5	0.1	Measure: 00X_C.par	0.0000

Selected standard: Standard 1 (De)activate

Measure: 00X_C.par Source



00X_S.dat

Samples

- Sample 1 - XXXXX
- Sample 2 - YYYYY
- Sample 3 - ZZZZZ

Parameters Audit trail Notes

Designation	SPECORD 40
Display	Absorbance
Correction	Reference
Lamp change at	320 nm
Meas. mode	Scan Mode
Range [nm]	375 - 1100
Delta lambda [nm]	1
Speed [nm/s]	50

Transmittance Absorbance Values

1. Klikněte na ikonu „Start!“.

2. Vyberte z ikonového menu „All.“

Calibration

File Edit To Conc. Close

General Calculation

Standards

Designation: OK Cancel Start! Reference Statistics

Standard	Conc.	Measure	Value
Standard 1	0.02	Measure: 00X_C.par	0.0000
Standard 2	0.04	Measure: 00X_C.par	0.0000
Standard 3	0.06	Measure: 00X_C.par	0.0000
Standard 4	0.08	Measure: 00X_C.par	0.0000
Standard 5	0.1	Measure: 00X_C.par	0.0000

Selected standard: Standard 1 (De)activate

Measure: 00X_C.par Source



00X_S.dat

Samples

- Sample 1 - XXXXX
- Sample 2 - YYYYY
- Sample 3 - ZZZZ

Parameters Audit trail Notes

Designation	SPECORD 40
Display	Absorbance
Correction	Reference
Lamp change at	320 nm
Meas. mode	Scan Mode
Range [nm]	375 - 1100
Delta lambda [nm]	1
Speed [nm/s]	50

Transmittance Absorbance Values

Calibration

File Edit To Conc. Close

General Calculation

Designation	Operator	OK	Cancel	Start	Reference	Statistics
Standard	Conc.	Source	A			
Standard 1	0.02	Measure: 00X_C.par	0.0000			

Information

Please insert the following sample:
Standard 1 (0.02 mol/L) for the 1. Cycle

OK Cancel

Selected standard: Standard 1 (De)activate

Measure: 00X_C.par Source

Objeví se žádost o vložení standardu A1.

Po vložení standartu A1 klikněte na tlačítko „OK“.



00X_S.dat

Samples

- Sample 1 - XXXXX
- Sample 2 - YYYYY
- Sample 3 - ZZZZZ

Parameters Audit trail Notes

Designation	SPECORD 40
Display	Absorbance
Correction	Reference
Lamp change at	320 nm
Meas. mode	Scan Mode
Range [nm]	375 - 1100
Delta lambda [nm]	1
Speed [nm/s]	50

Transmittance Absorbance Values

[A]

Calibration

File Edit To Conc. Close

General Calculation

Standard	Conc.	Source	A
Standard 1	0.02	Measure: 00X_C.par	

Information

Please insert the following sample:
Standard 2 (0.04 mol/L) for the 1. Cycle

OK Cancel

Selected standard: Standard 1 (De)activate

Measure: 00X_C.par Source

Objeví se žádost o vložení standardu A2.

Po vložení standartu A2 klikněte na tlačítko „OK“.



00X_S.dat

Samples

- Sample 1 - XXXXX
- Sample 2 - YYYYY
- Sample 3 - ZZZZZ

Parameters Audit trail Notes

Designation	SPECORD 40
Display	Absorbance
Correction	Reference
Lamp change at	320 nm
Meas. mode	Scan Mode
Range [nm]	375 - 1100
Delta lambda [nm]	1
Speed [nm/s]	50

Transmittance Absorbance Values

[A]

Absorbance Spectrums

Objeví se žádost o vložení standardu A3.

Calibration

File Edit To Conc. Close

General Calculation

Designation	Operator	OK	Cancel	Start	Reference	Statistics
Standard	Conc.	Source	A			
Standard 1	0.02	Measure: 00X_C.par				

Information

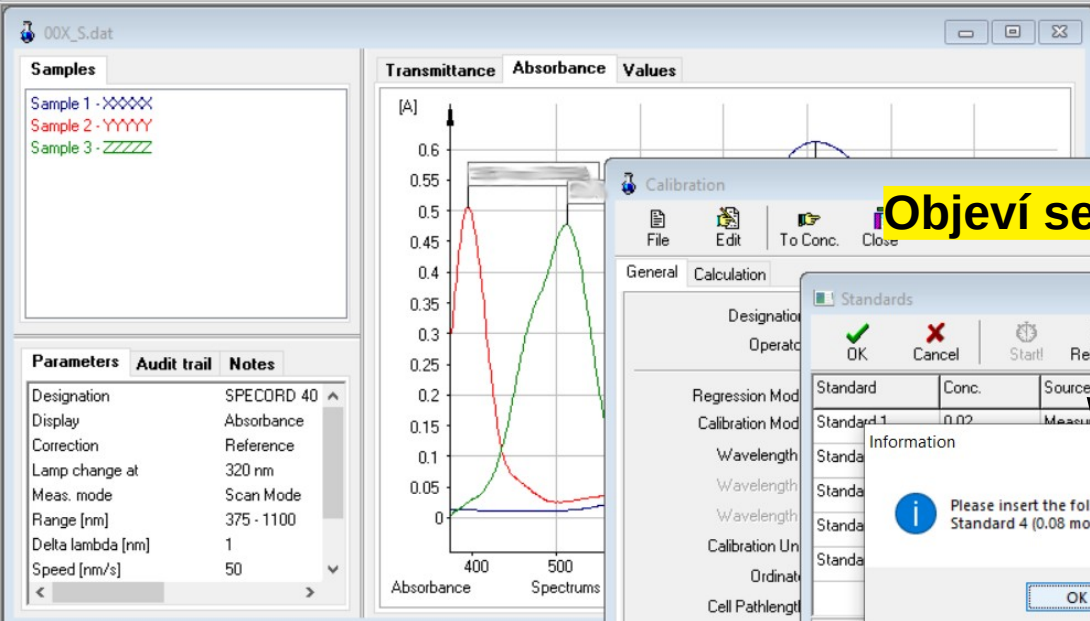
Please insert the following sample:
Standard 3 (0.06 mol/L) for the 1. Cycle

OK Cancel

Selected standard: Standard 1 (De)activate

Measure: 00X_C.par Source

Po vložení standartu A3 klikněte na tlačítko „OK“.



Calibration
File Edit To Conc. Close

General Calculation

Standard	Conc.	Source	A
Standard 1	0.02	Measure: 00X_C.par	

Information

Please insert the following sample:
Standard 4 (0.08 mol/L) for the 1. Cycle

OK Cancel

Selected standard: Standard 1 (De)activate

Measure: 00X_C.par Source

Objeví se žádost o vložení standardu A4.

Po vložení standartu A4 klikněte na tlačítko „OK“.



00X_S.dat

Samples

- Sample 1 - XXXXX
- Sample 2 - YYYYY
- Sample 3 - ZZZZZ

Parameters Audit trail Notes

Designation	SPECORD 40
Display	Absorbance
Correction	Reference
Lamp change at	320 nm
Meas. mode	Scan Mode
Range [nm]	375 - 1100
Delta lambda [nm]	1
Speed [nm/s]	50

Transmittance Absorbance Values

[A]

Absorbance Spectrums

Objeví se žádost o vložení standardu A5.

Calibration

File Edit To Conc. Close

General Calculation

Designation	Operator	OK	Cancel	Start	Reference	Statistics
Standard	Conc.	Source	A			
Standard 1	0.02	Measure: 00X_C.par				

Information

Please insert the following sample:
Standard 5 (0.10 mol/L) for the 1. Cycle

OK Cancel

Selected standard: Standard 1 (De)activate

Measure: 00X_C.par Source

Po vložení standartu A5 klikněte na tlačítko „OK“.



00X_S.dat

Samples

- Sample 1 - XXXXX
- Sample 2 - YYYYY
- Sample 3 - ZZZZ

Parameters Audit trail Notes

Designation	SPECORD 40
Display	Absorbance
Correction	Reference
Lamp change at	320 nm
Meas. mode	Scan Mode
Range [nm]	375 - 1100
Delta lambda [nm]	1
Speed [nm/s]	50

Transmittance Absorbance Values

Absorbance Spectrums

Calibration

File Edit To Conc. Close

General Calculation

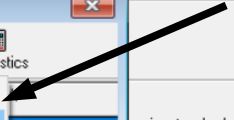
Standards

Standard	Conc.	All
Standard 1	0.02	Sel. standard
Standard 2	0.04	Measure: 00X_C.par
Standard 3	0.06	Measure: 00X_C.par
Standard 4	0.08	Measure: 00X_C.par
Standard 5	0.1	Measure: 00X_C.par

Selected standard: Standard 1 (De)activate

Measure: 00X_C.par Source

V případě, že dojde při měření některého standartu k chybě. Proveďte jeho samostatné měření pomocí položky „Sel. standard“ v ikonovém menu „Start!“.





00X_S.dat

Samples

- Sample 1 - XXXXX
- Sample 2 - YYYYY
- Sample 3 - ZZZZ

Parameters Audit trail Notes

Designation	SPECORD 40
Display	Absorbance
Correction	Reference
Lamp change at	320 nm
Meas. mode	Scan Mode
Range [nm]	375 - 1100
Delta lambda [nm]	1
Speed [nm/s]	50

Transmittance Absorbance Values

Po odměření všech standardů klikněte na ikonu „OK“.

Calibration

File Edit To Conc. Close

General Calculation

Standards

Standard	Conc.	Source	A
Standard 1	0.02	Measure: 00X_C.par	
Standard 2	0.04	Measure: 00X_C.par	
Standard 3	0.06	Measure: 00X_C.par	
Standard 4	0.08	Measure: 00X_C.par	
Standard 5	0.1	Measure: 00X_C.par	

Selected standard: Standard 1 (De)activate

Measure: 00X_C.par Source

OK Cancel Start! Reference Statistics

Standards



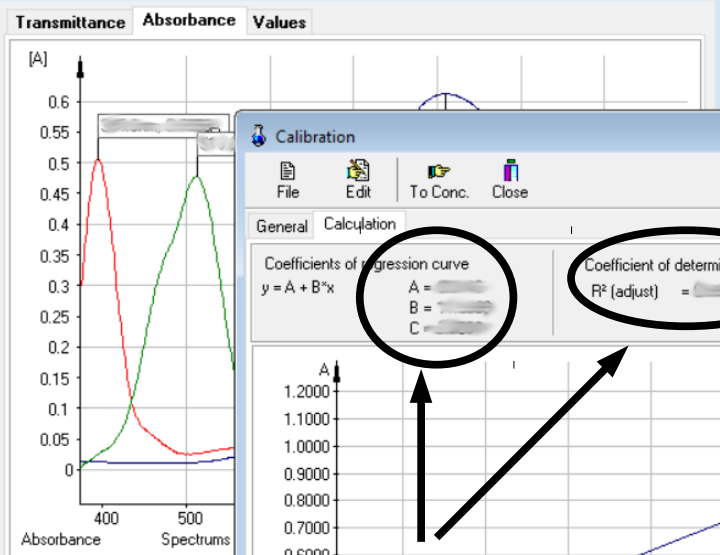
00X_S.dat

Samples

Sample 1 - XXXXX
Sample 2 - YYYYY
Sample 3 - ZZZZZ

Parameters **Audit trail** **Notes**

Designation	SPECORD 40
Display	Absorbance
Correction	Reference
Lamp change at	320 nm
Meas. mode	Scan Mode
Range [nm]	375 - 1100
Delta lambda [nm]	1
Speed [nm/s]	50



Calibration

File Edit To Conc. Close

General Calculation

Coefficients of regression curve
 $y = A + B \cdot x$

A = []
B = []
C = []

Coefficient of determination
 R^2 (adjust) = []

Zaznamenejte jednotlivé hodnoty do protokolu.



00X_S.dat

Samples

- Sample 1 - XXXXX
- Sample 2 - YYYYY
- Sample 3 - ZZZZZ

Parameters Audit trail Notes

Designation	SPECORD 40
Display	Absorbance
Correction	Reference
Lamp change at	320 nm
Meas. mode	Scan Mode
Range [nm]	375 - 1100
Delta lambda [nm]	1
Speed [nm/s]	50

Transmittance Absorbance Values

Calibration

File Edit To Conc. Close

- New
- Open
- Copy to clipboard
- Export to ASCII-File
- Print
- Save
- Save as...
- Close

Coefficient of determination
 R^2 (adjust)

Standard	Concentration (mol/l)	Absorbance
Standard 1	0.02	0.3000
Standard 2	0.04	0.4500
Standard 3	0.06	0.6000
Standard 4	0.10	0.8000

1. V menu vyberte položku „File.“

2. V podmenu vyberte položku „Save as“.

Soubor uložte do adresáře Dokumenty\Praktika_CZ\KruhXX, kde XX je číslo kruhu.

The screenshot shows the WinASPECT interface with a calibration curve plot. The plot has 'Absorbance' on the y-axis (0 to 0.6) and 'Spectrums' on the x-axis (400 to 500 nm). Three curves are shown: red (Sample 1), yellow (Sample 2), and green (Sample 3). A 'Calibration' dialog box is open, showing 'Save in: Karton' and 'File name: 00X_C'. The 'Save as type:' is 'Calibration (*.cf)'. A 'Save' button is highlighted with an arrow.

File name – Označení Týmu + _C (Název souboru je tvořen označením týmu a příponou _C)

Nakonec stiskni tlačítko „Save“.



00X_S.dat

Samples

- Sample 1 - XXXXX
- Sample 2 - YYYYY
- Sample 3 - ZZZZ

Parameters Audit trail Notes

Designation	SPECORD 40
Display	Absorbance
Correction	Reference
Lamp change at	320 nm
Meas. mode	Scan Mode
Range [nm]	375 - 1100
Delta lambda [nm]	1
Speed [nm/s]	50

Transmittance Absorbance Values

[A]

1. V menu vyberte položku „File“.

Calibration

File Edit To Conc. Close

- New
- Open
- Copy to clipboard
- Export to ASCII-File
- Print
- Save
- Save as...
- Close

Coefficient of determination
 R^2 (adjust) = 0.9999

Standard	Concentration (mg/l)	Absorbance
Standard 1	0.02	0.3000
Standard 2	0.04	0.5000
Standard 3	0.06	0.7000

2. V podmenu vyber položku „Print“.



00X_S.dat

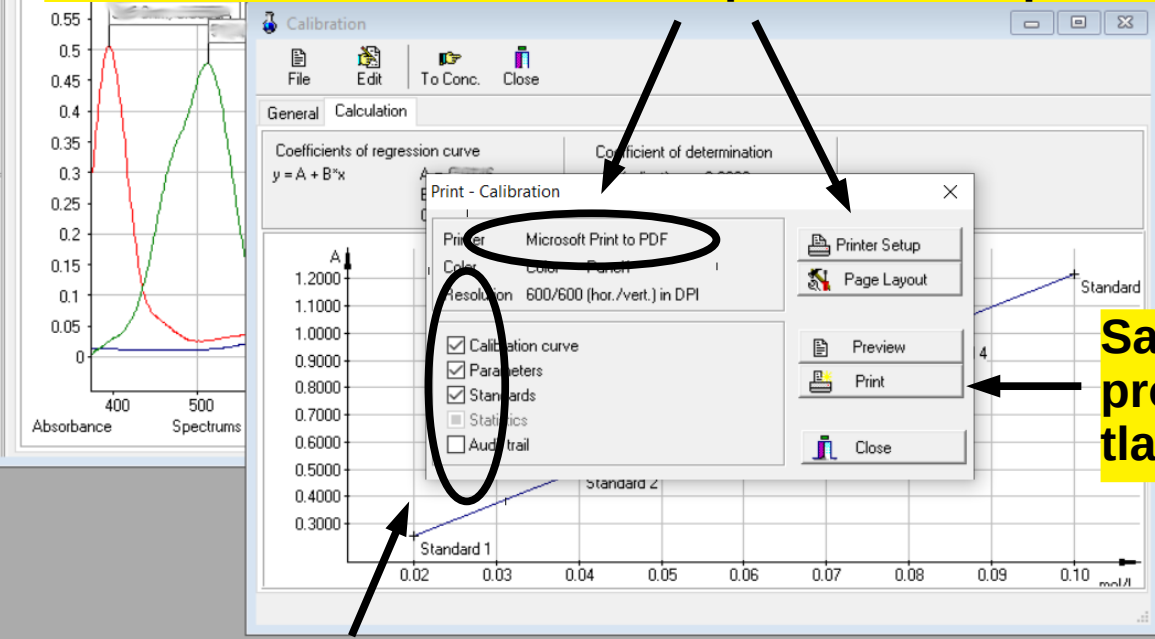
Samples

Sample 1 - XXXXX
Sample 2 - YYYYY
Sample 3 - ZZZZ

Parameters **Audit trail** **Notes**

Designation	SPECORD 40
Display	Absorbance
Correction	Reference
Lamp change at	320 nm
Meas. mode	Scan Mode
Range [nm]	375 - 1100
Delta lambda [nm]	1
Speed [nm/s]	50

Zkontrolujte je-li „Printer“ nastaven na „Microsoft Print to PDF. Jinak zmáčkní tlačítko „Printer Setup“ a nastav správnou tiskarnu.



Samotný tisk provedeš stiskem tlačítko „Print“.

Ujistěte se, že jsou zapnuty první tři volby a volba „Audit trial“ je vypnutá.



00X_S.dat

Samples

- Sample 1 - XXXXX
- Sample 2 - YYYYY
- Sample 3 - ZZZZZ

Parameters Audit trail Notes

Designation	SPECORD 40
Display	Absorbance
Correction	Reference
Lamp change at	320 nm
Meas. mode	Scan Mode
Range [nm]	375 - 1100
Delta lambda [nm]	1
Speed [nm/s]	50

Transmittance Absorbance Values

Print

Printer: Microsoft Print to PDF

Status: Ready
Type: Microsoft Print To PDF
Where: PORTPROMPT:
Comment:

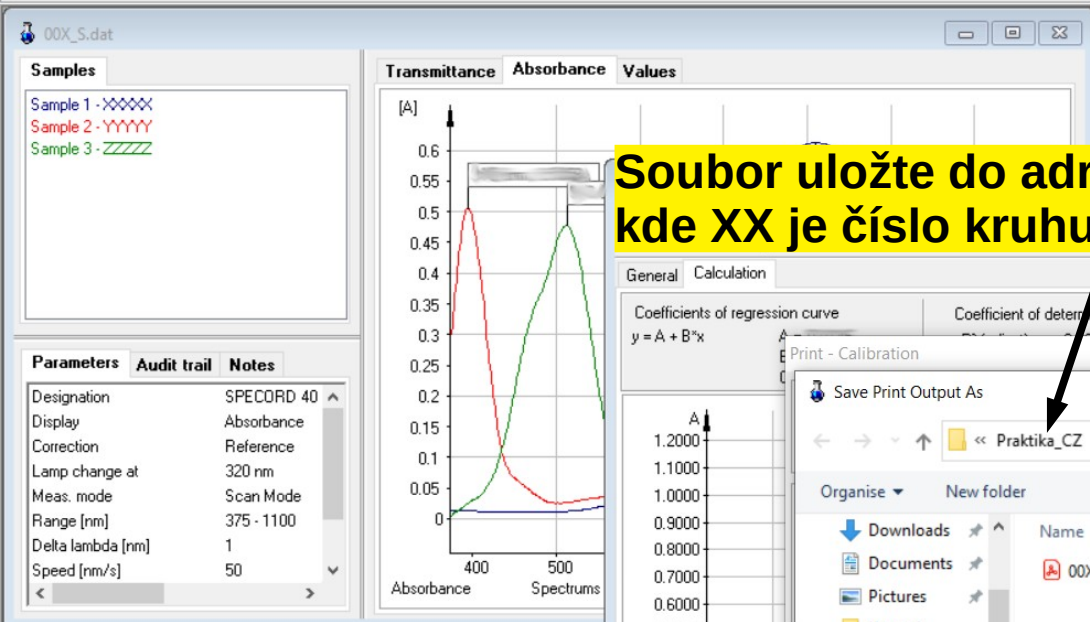
Print range: All
 Pages from: to:
 Selection

Copies: Number of copies: 1
 Collate

Audit trail

OK Cancel

Potvrďte tisk zmačknutím tlačítka „OK“.



Soubor uložte do adresáře Dokumenty\Praktika_CZ\KruhXX, kde XX je číslo kruhu.

Save Print Output As

« Praktika_CZ » Kantori

Organise New folder

Name	Date modified	Type
00X_S	09/10/2021 10:39	Adobe A

File name: 00X_C

Save as type: PDF Document (*.pdf)

Save Cancel

Nakonec stiskni tlačítko „Save“.

**File name – Označení Týmu + _C
(Název souboru je tvořen
označením týmu a příponou _C)**



00X_S.dat

Samples

- Sample 1 - XXXXX
- Sample 2 - YYYYY
- Sample 3 - ZZZZZ

Parameters Audit trail Notes

Designation	SPECORD 40
Display	Absorbance
Correction	Reference
Lamp change at	320 nm
Meas. mode	Scan Mode
Range [nm]	375 - 1100
Delta lambda [nm]	1
Speed [nm/s]	50

Transmittance Absorbance Values

Calibration

File Edit To Conc. Close

General Calculation

Coefficients of regression curve

$y = A + B \cdot x$

Coefficient of determination

Print - Calibration

Printer: Microsoft Print to PDF
Color: Color Panel1
Resolution: 600/600 (hor./vert.) in DPI

Calibration curve
 Parameters
 Standards
 Statistics
 Audit trail

Printer Setup
Page Layout
Preview
Print
Close

Okno „Print – Calibration“ se zavře stiskem tlačítka „Close“.



Po ukončení kalibrace klikni na ikonu „To Conc.“

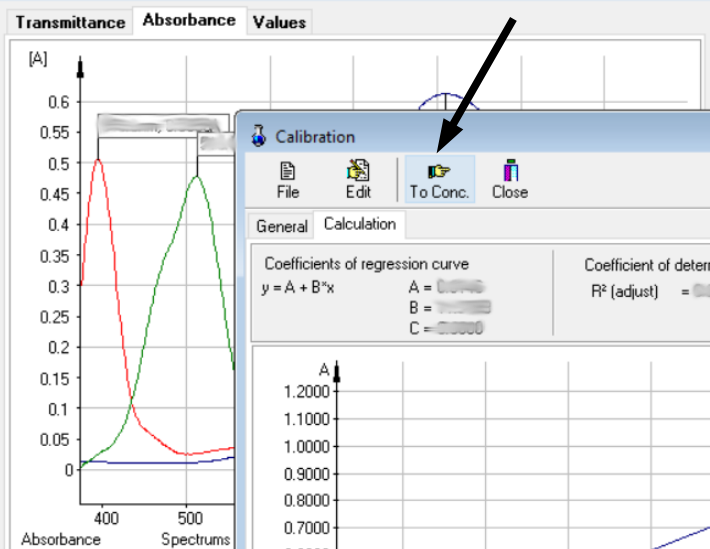
00X_S.dat

Samples

- Sample 1 - XXXXX
- Sample 2 - YYYYY
- Sample 3 - ZZZZZ

Parameters **Audit trail** **Notes**

Designation	SPECORD 40
Display	Absorbance
Correction	Reference
Lamp change at	320 nm
Meas. mode	Scan Mode
Range [nm]	375 - 1100
Delta lambda [nm]	1
Speed [nm/s]	50



Calibration

File Edit **To Conc.** Close

General Calculation

Coefficients of regression curve
 $y = A + B \cdot x$

A =	0.0040
B =	10.0000
C =	0.0000

Coefficient of determination
 R^2 (adjust) = 0.9999

Standard	Concentration [mol/l]	Absorbance [A]
Standard 1	0.02	0.3000
Standard 2	0.04	0.5000
Standard 3	0.06	0.7000
Standard 4	0.08	0.9000

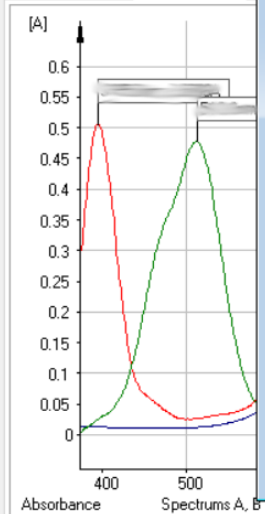


00X_S.dat

Samples

- Sample 1 - XXXXX
- Sample 2 - YYYYY
- Sample 3 - ZZZZZ

Transmittance Absorbance



Parameters **Audit trail** **Notes**

Designation	SPECORD 40
Display	Absorbance
Correction	Reference
Lamp change at	320 nm
Meas. mode	Scan Mode
Range [nm]	375 - 1100
Delta lambda [nm]	1
Speed [nm/s]	50

Concentration

File Edit Start (File) Start (Meas.) Reference Close

Parameters **Concentrations** **Calibration Data**

Designation	
Operator	00X
Date/Time	09/10/2021 11:42:20
Repeat measurement	Single
Check Sample	
Calibration data	File
Calibration - File	00X_C.cf
Concentration units	mol/L
Ordinate Unit	A

Vložte referenční vzorek a klikněte na ikonu „Reference“.

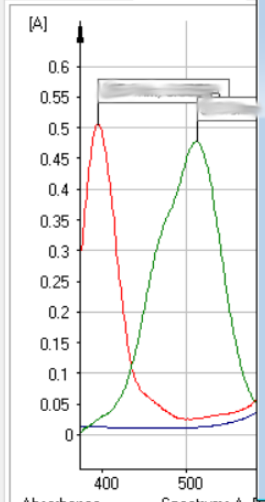


00X_S.dat

Samples

- Sample 1 - XXXXX
- Sample 2 - YYYYY
- Sample 3 - ZZZZZ

Transmittance Absorbance



Parameters **Audit trail** **Notes**

Designation	SPECORD 40
Display	Absorbance
Correction	Reference
Lamp change at	320 nm
Meas. mode	Scan Mode
Range [nm]	375 - 1100
Delta lambda [nm]	1
Speed [nm/s]	50

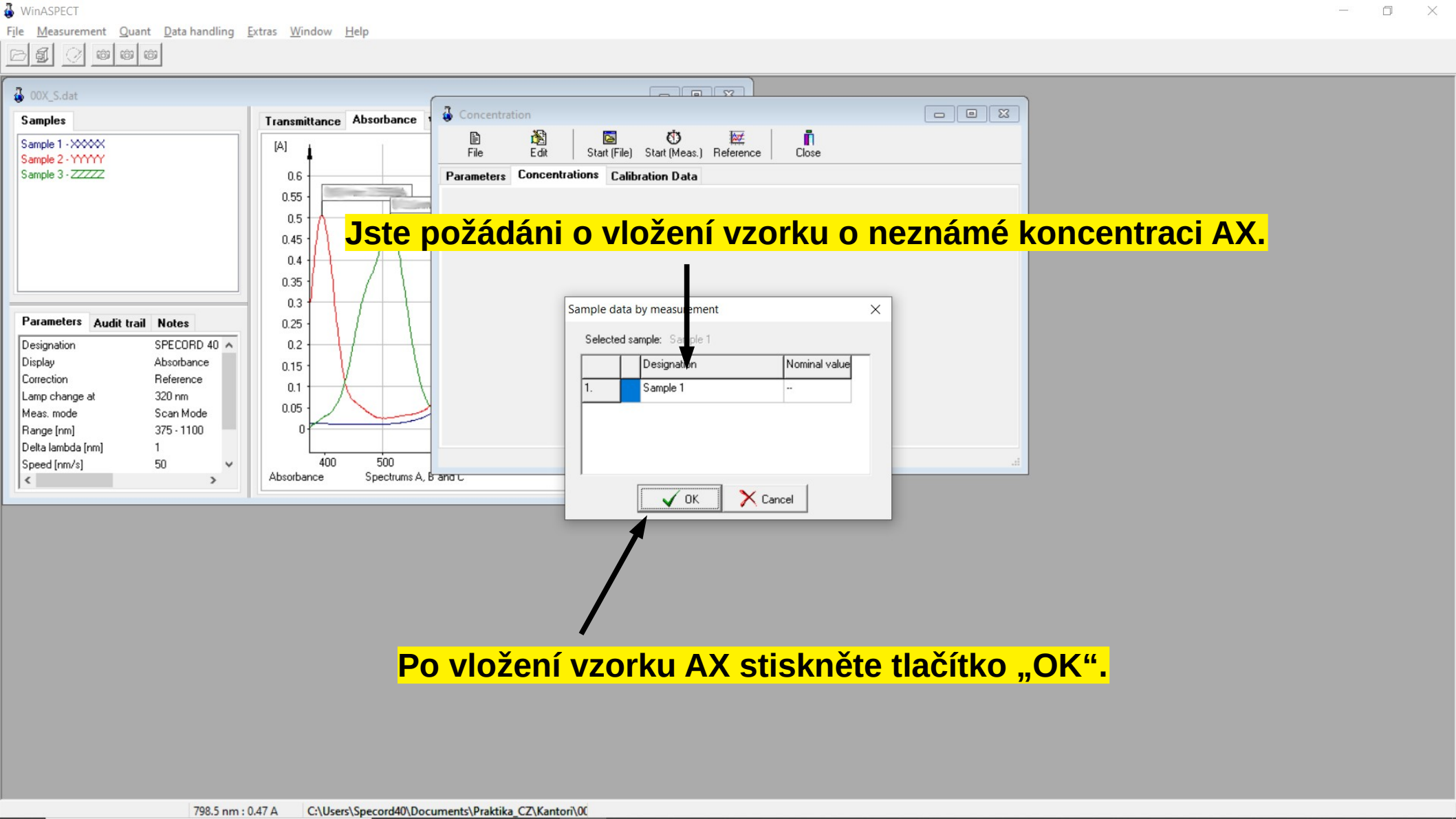
Concentration

File Edit Start (File) **Start (Meas.)** Reference Close

Parameters **Concentrations** **Calibration data**

Designation	
Operator	00X
Date/Time	09/10/2021 11:42:20
Repeat measurement	Single
Check Sample	
Calibration data	
Calibration - File	
Concentration units	
Ordinate Unit	A

Po proměření referenčního vzorku klikněte na ikonu „Start (Meas.)“



Jste požádáni o vložení vzorku o neznámé koncentraci AX.

Po vložení vzorku AX stiskněte tlačítko „OK“.



00X_S.dat

Samples

- Sample 1 - XXXXX
- Sample 2 - YYYYY
- Sample 3 - ZZZZZ

Parameters **Audit trail** **Notes**

Designation	SPECORD 40
Display	Absorbance
Correction	Reference
Lamp change at	320 nm
Meas. mode	Scan Mode
Range [nm]	375 - 1100
Delta lambda [nm]	1
Speed [nm/s]	50

Transmittance **Absorbance**

Absorbance Spectrums A, B and C

Concentration

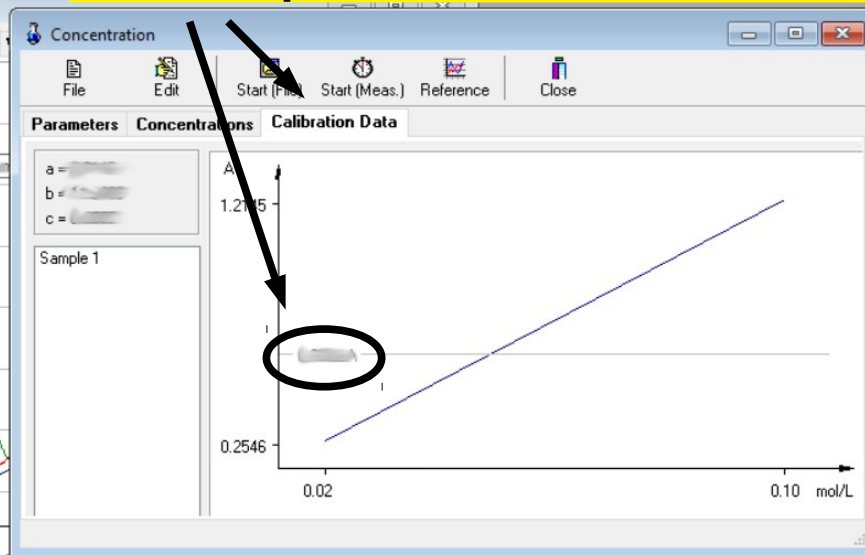
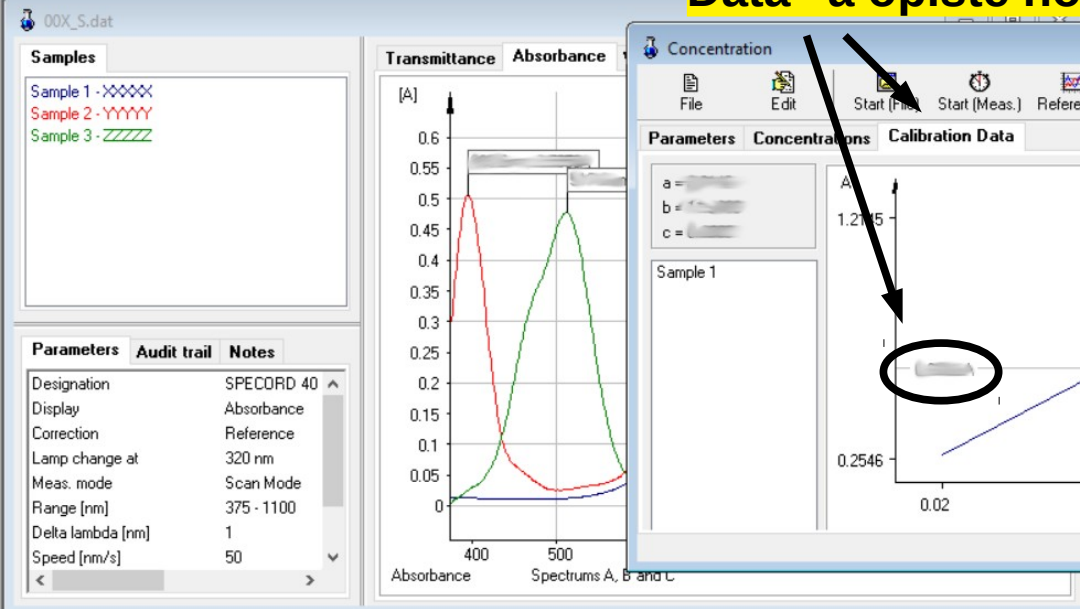
File Edit Start (File) Start (Meas.) Reference Close

Parameters **Concentrations** **Calibration Data**

No.	Sample name	Date/Time	Conc.	Nom. value	Med. value	Span	Stan. dev.
1	Sample 1	09/10/2021 11:44:35		--	--	--	--

V podokně „Concentration” vyberte panel „Concentrations“ a opište hodnotu změřené koncentrace do protokolu.

V podokně „Concentration” vyberte panel „Calibration Data“ a opište hodnotu změřené absorpce do protokolu.



1. V menu vyberte položku „File“.



00X_S.dat

Samples

- Sample 1 - XXXXX
- Sample 2 - YYYYY
- Sample 3 - ZZZZZ

Parameters **Audit trail** **Notes**

Designation	SPECORD 40
Display	Absorbance
Correction	Reference
Lamp change at	320 nm
Meas. mode	Scan Mode
Range [nm]	375 - 1100
Delta lambda [nm]	1
Speed [nm/s]	50

Transmittance Absorbance

[A]

Concentration

File Edit Start (File) Start (Meas.) Reference Close

- New
- Open
- Print
- Copy to clipboard
- Save
- Save as...
- Export to ASCII-File
- Close

libration Data

2. V podmenu vyber položku „Save“.

Soubor uložte do adresáře Dokumenty\Praktika_CZ\KruhXX, kde XX je číslo kruhu.

00X_S.dat

Samples

- Sample 1 - XXXXX
- Sample 2 - YYYYY
- Sample 3 - ZZZZZ

Parameters **Audit trail** **Notes**

Designation	SPECORD 40
Display	Absorbance
Correction	Reference
Lamp change at	320 nm
Meas. mode	Scan Mode
Range [nm]	375 - 1100
Delta lambda [nm]	1
Speed [nm/s]	50

Transmittance **Absorbance**

[A]

Absorbance Spectrums A, B and C

Concentration

File Edit Start (File) Start (Meas.) Reference Close

Parameters **Concentrations** **Calibration Data**

a = b = c =

Sample 1

Save As

Save in: Kantori

Name	Date modified	Type	Size
No items match your search.			

File name: 00X_C Save

Save as type: Konzentration (*.coc) Cancel

**File name – Označení Týmu + _C
(Název souboru je tvořen
označením týmu a příponou _C)**

Nakonec stiskni tlačítko „Save“.

Konec