

Kategorie:Histologické preparáty

Pages in category "Histologické preparáty"

The following 200 pages are in this category, out of 213 total.

(previous page) (next page)

A

- Aorta - RF
- Appendix (obrázek)
- Appendix - HE
- Appendix, detail (obrázek)
- Aromatická žláza (obrázek)
- Arteria - zelený trichrom / green trichrom
- Arterie svalová / Muscle artery - HE
- Autonomní ganglion / Autonomic ganglion - HE
- Axilla - HE

B

- Bronchus - HE
- Brzlík / Thymus - HE
- Bulbus oculi (SFLT)
- Bulbus oculi - HE

C

- Chorion frondosum - HE
- Colon (obrázek)
- Corpus luteum
- Corpus luteum - HE

D

- Dorsum linguae (obrázek)
- Ductus deferens (obrázek)
- Ductus deferens - HE
- Duodenum (obrázek)
- Duodenum - HE
- Procvičování:Dýchací systém
- Děloha / Uterus - HE

E

- Elastická arterie / Elastic artery (aorta) - HE
- Elastická arterie / Elastic artery (aorta) - WRF
- Elastická chrupavka (obrázek)
- Portál:Embryologické preparáty
- Epididymis - HE
- Epiglottis - HE
- Epiglottis - RF

F

- Funiculus spermaticus (obrázek)
- Funiculus spermaticus - HE

G

- Glandula parathyroidea (histologický preparát)
- Glandula parathyroidea - HE
- Glandula parotis (obrázek)
- Glandula parotis - HE
- Glandula parotis, detail (obrázek)
- Glandula sublingualis (obrázek)
- Glandula sublingualis - HE
- Glandula sublingualis, detail (obrázek)
- Glandula submandibularis (obrázek)

- Glandula submandibularis (obrázek)
- Glandula submandibularis - HE
- Glandula submandibularis, detail (obrázek)
- Glandula suprarenalis - AZAN
- Glandula suprarenalis - HE

H

- Procvičování:Histologické barvení
- Portál:Histologické praktikum (1. LF UK)
- Portál:Histologický atlas (3. LF UK)
- Histologický atlas 3. LF UK – modul A
- Histologický atlas 3. LF UK – modul B
- Hladká svalovina (obrázek)
- Hnědá tuková tkáň / Brown adipose tissue - HE
- Hyalinní chrupavka (obrázek)
- Hypofýza (obrázek)
- Hypofýza / Hypophysis - HE
- Hypofýza, detail (obrázek)
- Hypofýza, gudde (obrázek)
- Hypofýza, gudde 2 (obrázek)
- Hypophysis - orange G
- Hypophysis - PAS+ H

I

- Impregnace stříbrem

J

- Jaterní lalůček (obrázek)
- Jazyk - dorsum / Dorsum of tongue - HE
- Jazyk - radix / Root of tongue - HE
- Jednovrstevný cylindrický epitel (obrázek)
- Jednovrstevný kubický epitel (obrázek)
- Jednovrstevný plochý epitel (obrázek)
- Játra (obrázek)
- Játra / Liver - HE
- Játra / Liver - PAS
- Jícen (obrázek)
- Jícen / Esophagus - HE
- Jícen, detail (obrázek)

K

- Kardie žaludku / Stomach cardia - HE
- Kloubní chrupavka / Articular cartilage - HE
- Kosterní svalovina (obrázek)
- Portál:Kožní systém
- Procvičování:Kožní systém
- Kůra ledviny (obrázek)
- Kůže / Skin - HE
- Kůže břicha / Skin - HE
- Kůže s vlasy / Skin with hair of head - HE
- Kůže tlustého typu / Thick skin - HE

L

- Labia oris - rty (histologický preparát)
- Labium oris, kožní část (obrázek)
- Labium oris, slizniční část (obrázek)
- Lamelná kost (SFLT)
- Lamelná kost / Lamellar bone - HE
- Ledvina / Kidney - HE
- Ledvina / Kidney - WvG
- Lymfatická uzlina / Lymph node - Ag
- Lymfatická uzlina / Lymph node - HE
- Portál:Lymfatické orgány
- Lymfatický systém (praktikum) (1. LF UK)

M

- Mamma lactans - HE
- Mamma non lactans - HE
- Mamma non lactans (obrázek)

- Mázová žláza (obrázek)
- Mozek / Cerebrum - HE
- Mozek / Cerebrum - Myelin
- Mozeček / Cerebellum - HE
- Mozeček / Cerebellum - KV
- Mozeček kresylviolet
- Mozeček, detail (obrázek)
- Močový měchýř / Urinary bladder - WvG
- Močový měchýř / Urinary bladder - HE
- Močový měchýř 1 (obrázek)
- Močový měchýř 2 (obrázek)
- Močový měchýř, detail (obrázek)
- Mucinózní buňka (obrázek)
- Mícha / Spinal cord - gallocyanin
- Mícha / Spinal cord - HE
- Míšní nerv / Spinal nerve - HE
- Měkké patro, nasální strana (obrázek)
- Měkké patro, nasální strana, detail (obrázek)
- Měkké patro, orální strana (obrázek)

N

- Nadledvina (obrázek)
- Nadledvina / Adrenal gland - HE
- Nadledvina, detail (obrázek)
- Nadvarle (obrázek)
- Nervová tkáň (praktikum) (1. LF UK)
- Nervus opticus - HE

O

- Procvičování:Obecná histologie
- Obecné zásady mikroskopování
- Organum vestibulocochleare - HE
- Ossificatio enchondralis
- Ossificatio membranacea - HE
- Ovarium - HE
- Ovarium králíka / Rabbit ovary - HE

P

- Pancreas - HE
- Pankreas (histologický preparát)
- Pankreas (obrázek)
- Pankreas, detail (obrázek)
- Papillae filiformes (obrázek)
- Papillae valatae (obrázek)
- Pars olfactoria mucosae nasi - HE
- Patrová krční mandle / Tonsilla Pallatina - HE
- Penis - HE
- Placenta - 1. trimestr (galerie)
- Placenta - 3. trimestr (galerie)
- Placenta - HE
- Placenta - PAS+ H
- Plexus choroideus - HE
- Plodové obaly / Fetal membranes - HE
- Plíce/Lung - HE
- Portobiliární prostor (obrázek)
- Potní žláza (obrázek)
- Prostata - HE
- Prostata - WvG
- Prostata, detail (obrázek)
- Prostata, trichrom (obrázek)
- Pupečník / Umbilical cord - HE
- Pylorus (histologický preparát)
- Přechodní epitel (obrázek)

S

- Scrotum / Pigmented skin of scrotum - HE
- Serózní buňka (obrázek)
- Slezina / Spleen - Ag
- Slezina / Spleen - HE
- Slezina / Spleen - PAS
- Procvičování:Slinné žlázy

- Spinální ganglion / Spinal ganglion - HE
- Srdeční sval / Cardiac muscle - HE
- Srdeční sval / Cardiac muscle - HIH
- Srdeční svalovina (obrázek)
- Svalová arterie / Muscular artery (a. renalis) - HE
- Svalová arterie / Muscular artery (a. renalis) - WRF
- Svalové vřeténko / Muscle spindle - HE

T

- Tenké střevo / Small intestine - HE
- Tlusté střevo / Colon - HE
- Tonsilla lingualis - HE
- Procvičování:Trávicí systém
- Tuba uterina (ampulla) - HE
- Tuba uterina (ampulla) - HE
- Tuba uterina (isthmus) - HE

U

- Ureter 1 (obrázek)
- Ureter 2 (obrázek)
- Ureter, detail (obrázek)
- Uterus (endocervix) - HE
- Uterus (exocervix) - HE
- Uterus (fundus) - HE
- Uterus post partum - HE

V

- Vagina - HE
- Vagina - PAS+ H
- Varle (obrázek)
- Varle / Testis - HE
- Varle, celkový pohled (obrázek)
- Vena - HE
- Vena - WRF
- Vesicula seminalis - HE
- Vrstevnatý dlaždicový nerohovějící epitel (obrázek)
- Vrstevnatý dlaždicový nerohovějící epitel, detail (obrázek)
- Vrstevnatý dlaždicový rohovějící epitel (obrázek)
- Vrstevnatý dlaždicový rohovějící epitel, detail (obrázek)

Š

- Šlacha / Tendon - HE
- Štítná žláza (obrázek)
- Štítná žláza (preparát)
- Štítná žláza / Thyroid gland - HE
- Štítná žláza, detail (obrázek)

Ž

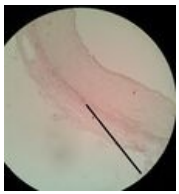
- Žaludek (obrázek)
- Žaludek fundus (preparát)

(previous page) (next page)

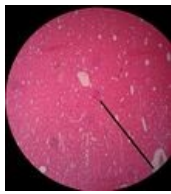
Media in category "Histologické preparáty"

The following 200 files are in this category, out of 1,416 total.

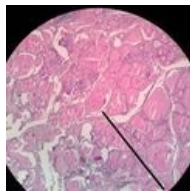
(previous page) (next page)



01 Svalova arteri...
1,920 × 2,068; 933
KB



02 Ledvina.jpg
1,920 × 2,137;
1.09 MB



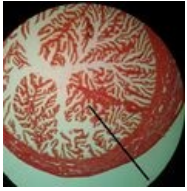
03 Stitna zlaza.jpg
1,920 × 1,920;
1.28 MB



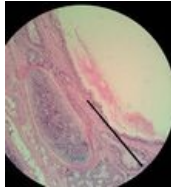
04 Tluste strevo.j...
1,920 × 2,127;
1.03 MB



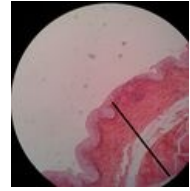
05 a Vejcovod 10...
1,920 × 2,073;
1.17 MB



05 b Vejcovod 40...
1,920 × 1,950;
1.24 MB



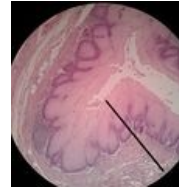
06 Bronchus.jpg
1,920 × 2,112;
1.14 MB



07 Mocovy mech...
1,920 × 2,004; 852
KB



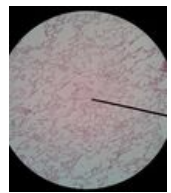
08 Kuze bricha.jpg
1,812 × 1,876; 973
KB



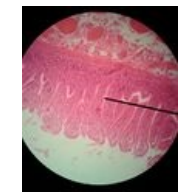
09 Jicen.jpg
1,920 × 2,058;
1.19 MB



10 Vagina.jpg
1,920 × 2,186;
1.07 MB



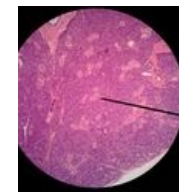
11 Plíce.jpg
1,876 × 2,210; 1
MB



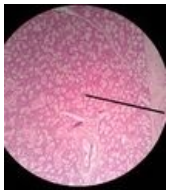
12 Tenke strevo.j...
1,920 × 2,279;
1.26 MB



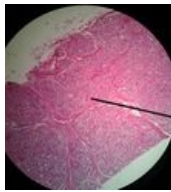
13 Pankreas.jpg
1,915 × 2,206; 1.3
MB



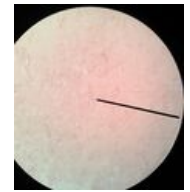
14 Parotis.jpg
1,920 × 2,201;
1.49 MB



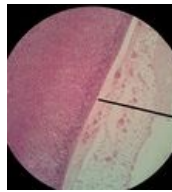
15 Submandibula...
1,910 × 2,191;
1.41 MB



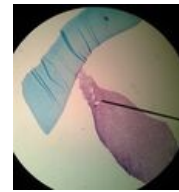
16 Mamma lacta...
1,910 × 2,107;
1.49 MB



17 Mamma nonla...
1,920 × 2,087; 849
KB



18 Nadledvina.jpg
1,920 × 2,092;
1.37 MB



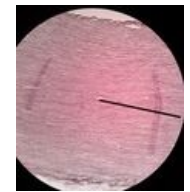
19 Mesenchym 4...
1,920 × 2,087; 952
KB



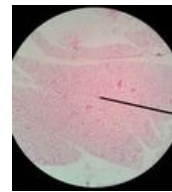
20 Pupecnik 40x ...
1,920 × 2,171;
1.05 MB



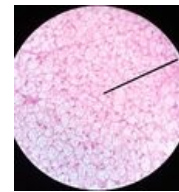
20 Pupecnik 40x...
1,920 × 2,171;
1.04 MB



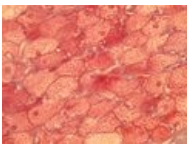
21 Aorta.jpg
1,920 × 2,117;
1.61 MB



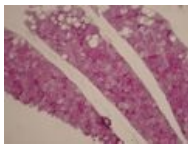
22 a Hnedý tuk 1...
1,920 × 2,196;
1.33 MB



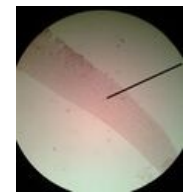
22 b Hnedý tuk 4...
1,920 × 2,137;
1.16 MB



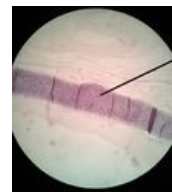
22 c Hnedý tuk 4...
2,592 × 1,944;
2.83 MB



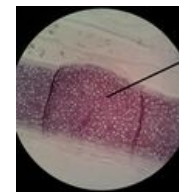
22 c Hnědý tuk .jpg
1,037 × 778; 233
KB



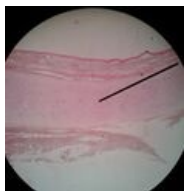
24 Kloubni chrup...
1,920 × 2,132; 772
KB



25 a Epiglottis RF...
1,920 × 2,206; 974
KB



25 b Epiglottis RF...
1,920 × 2,176;
1.01 MB



26 Epiglottis HE.jpg
1,920 × 1,984; 819 KB



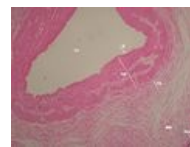
27 Desmogenni ...
1,920 × 2,220; 912 KB



29 a lamelosni k...
1,895 × 2,225; 922 KB



29 b lamelosni k...
1,920 × 2,191; 973 KB



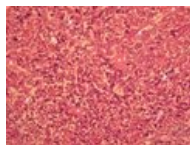
3. Umbilikální vé...
2,592 × 1,944; 1.48 MB



408 Connective T...
1,212 × 375; 358 KB



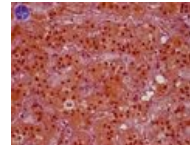
A a v centralis re...
2,592 × 1,944; 1.13 MB



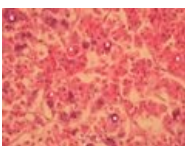
Adenofypofýza H...
2,592 × 1,944; 1.85 MB



Adenofypofýza H...
2,592 × 1,944; 1.93 MB



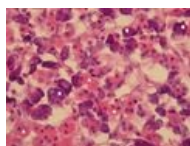
Adenohypofýza 8...
600 × 480; 67 KB



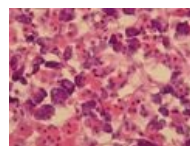
Adenohypofýza H...
2,592 × 1,944; 1.44 MB



Adenohypofýza H...
2,592 × 1,944; 1.51 MB



Adenohypofýza H...
2,592 × 1,944; 1.47 MB



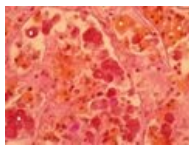
Adenohypofýza H...
2,592 × 1,944; 1.55 MB



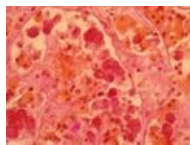
Adenohypofýza o...
1,296 × 972; 224 KB



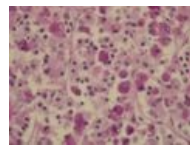
Adenohypofýza ...
1,296 × 972; 143 KB



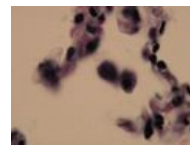
Adenohypofýza ...
2,592 × 1,944; 1.43 MB



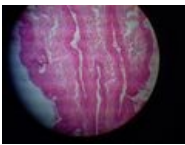
Adenohypofýza ...
2,592 × 1,944; 1.5 MB



Adenohypohýza ...
1,296 × 972; 128 KB



Alveolární makro...
1,296 × 972; 80 KB



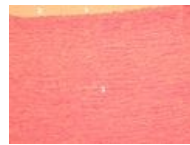
Anus1.jpg
640 × 480; 88 KB



Aorta a upr.jpg
2,592 × 1,944; 1.62 MB



Aorta a-original.jpg
2,592 × 1,944; 1.68 MB



Aorta HE 2 upr.jpg
2,592 × 1,944; 1.27 MB



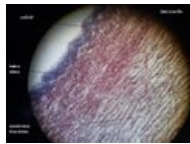
Aorta HE 2-origin...
2,592 × 1,944; 1.37 MB



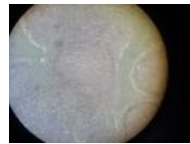
Aorta HE 6 upr.jpg
2,592 × 1,944; 1.22 MB



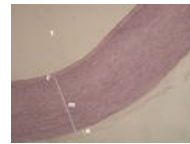
Aorta HE 6-origin...
2,592 × 1,944; 1.28 MB



Aorta podelne - e...
640 × 480; 54 KB



Aorta pricne 2.jpg
640 × 480; 114 KB



Aorta RF 2 upr.jpg
2,592 × 1,944; 1.48 MB



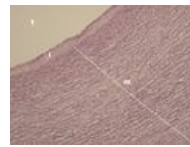
Aorta RF 2-origin...
2,592 × 1,944;
1.57 MB



Aorta RF 3.jpg
1,037 × 778; 171
KB



Aorta RF 4.jpg
1,037 × 778; 226
KB



Aorta RF upr.jpg
2,592 × 1,944;
1.59 MB



Aorta RF-original...
2,592 × 1,944;
1.67 MB



Aorta, RF 0,4x.jpeg
783 × 540; 130 KB



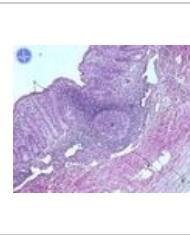
Aorta, RF 20x.jpeg
783 × 540; 703 KB



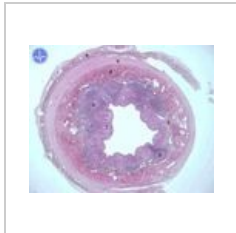
Aorta, RF 40x.jpeg
783 × 540; 745 KB



Aorta, RF 5x.jpeg
783 × 540; 781 KB



Appendix 2.jpg
600 × 480; 96 KB



Appendix.jpg
600 × 480; 42 KB



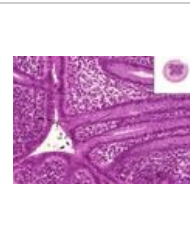
Appendix - detail...
3,046 × 2,454;
1.11 MB



Appendix, HE 1,3...
783 × 540; 299 KB



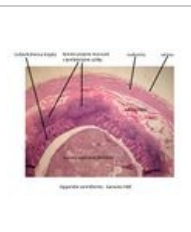
Appendix, HE 10...
783 × 540; 631 KB



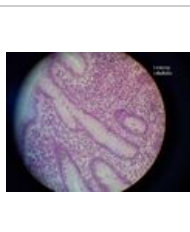
Appendix, HE 20...
783 × 540; 629 KB



Appendix, HE 5x...
783 × 540; 655 KB



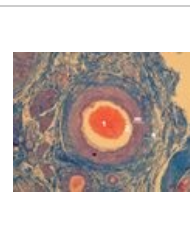
Appendix2.jpg
1,595 × 1,275; 303
KB



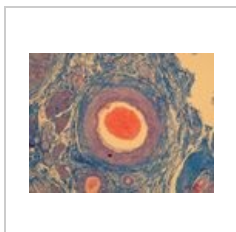
Appendix3 -a.jpg
640 × 480; 51 KB



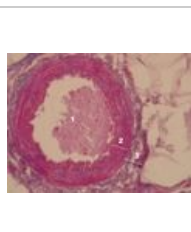
Aromatická žláza...
3,046 × 2,454; 807
KB



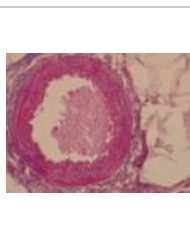
Arterie svalová A...
2,592 × 1,944;
1.64 MB



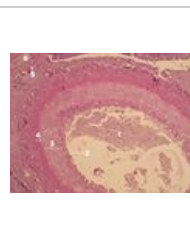
Arterie svalová A...
2,592 × 1,944;
1.73 MB



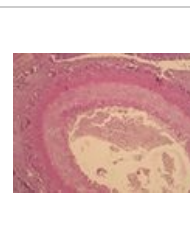
Arterie svalová A...
2,592 × 1,944;
1.36 MB



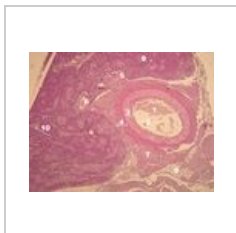
Arterie svalová A...
2,592 × 1,944;
1.43 MB



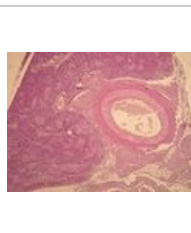
Arterie svalová H...
2,592 × 1,944;
1.51 MB



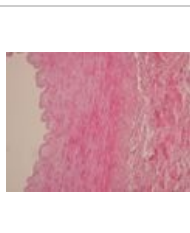
Arterie svalová H...
2,592 × 1,944;
1.59 MB



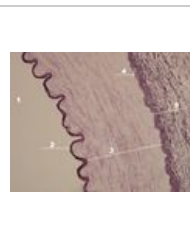
Arterie svalová H...
2,592 × 1,944;
2.09 MB



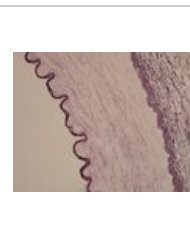
Arterie svalová H...
2,592 × 1,944; 2.2
MB



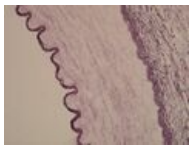
Arterie svalová H...
1,037 × 778; 196
KB



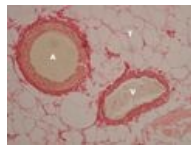
Arterie svalová R...
2,592 × 1,944;
1.36 MB



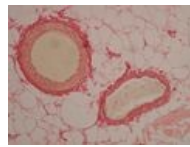
Arterie svalová R...
2,592 × 1,944;
1.43 MB



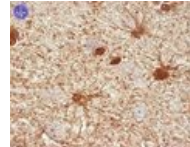
Arterie svalová R...
1,037 × 778; 167
KB



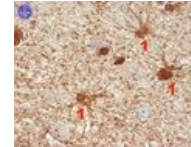
Artzerie a véna v...
2,592 × 1,944;
1.33 MB



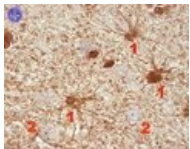
Artzerie a véna v...
2,592 × 1,944; 1.4
MB



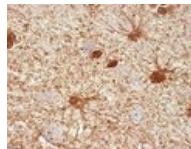
Astrocyty podkla...
600 × 480; 89 KB



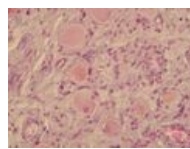
Astrocyty - upr.jpg
600 × 480; 162 KB



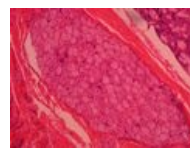
Astrocyty - upr2.j...
600 × 480; 163 KB



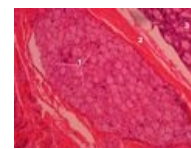
Astrocyty.jpg
878 × 702; 84 KB



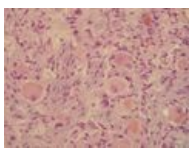
Autonomní gangl...
1,037 × 778; 191
KB



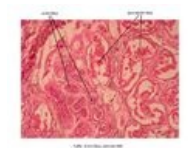
Autonomní gangl...
2,592 × 1,944;
1.98 MB



Autonomní gangl...
2,592 × 1,944;
1.88 MB



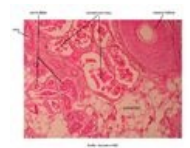
Autonomní gangl...
1,037 × 778; 204
KB



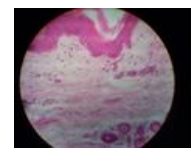
Axilla 1.jpg
3,046 × 2,454;
1.15 MB



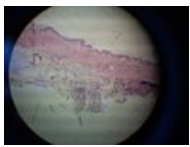
Axilla 2.jpg
3,046 × 2,454;
1.21 MB



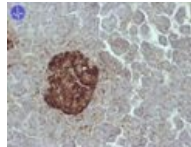
Axilla 3.jpg
3,046 × 2,454;
1.05 MB



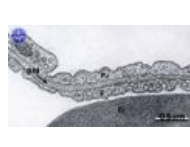
Axilla 5.jpg
640 × 480; 79 KB



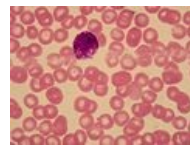
Axilla 6.jpg
640 × 480; 71 KB



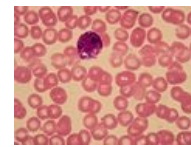
B buňky.jpg
600 × 479; 61 KB



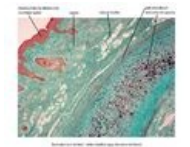
Bariera 2.jpg
300 × 166; 14 KB



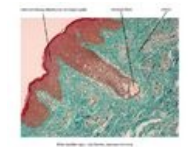
Bazofil 4 podklad...
2,592 × 1,944;
1.72 MB



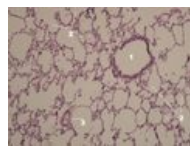
Bazofil 4.jpg
2,592 × 1,944;
1.66 MB



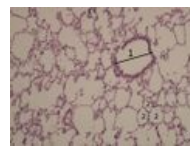
Boltec 2.jpg
3,046 × 2,454; 1.3
MB



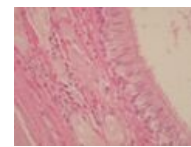
Boltec.jpg
3,043 × 2,454;
1.16 MB



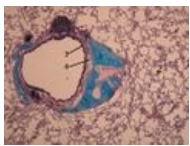
Bronchiolus upr.jpg
2,592 × 1,944;
1.39 MB



Bronchiolus.jpg
1,037 × 778; 214
KB



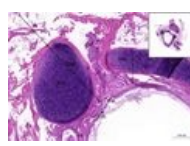
Bronchus 3lf.jpg
1,037 × 778; 141
KB



Bronchus 6.jpg
1,037 × 778; 329
KB



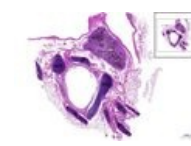
Bronchus segme...
783 × 540; 609 KB



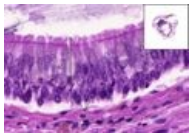
Bronchus segme...
783 × 540; 569 KB



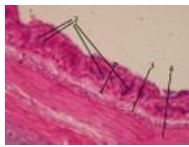
Bronchus segme...
783 × 540; 617 KB



Bronchus segme...
783 × 540; 348 KB



Bronchus - HE, 6...
783 × 540; 490 KB



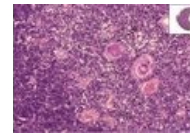
Bronchus2.jpg
1,037 × 778; 193 KB



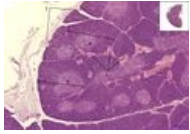
Bronchus4.jpg
1,037 × 778; 235 KB



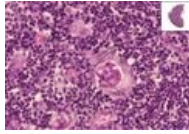
Brzlík-Thymus HE...
783 × 540; 232 KB



Brzlík-Thymus, H...
783 × 540; 684 KB



Brzlík-Thymus, H...
783 × 540; 608 KB



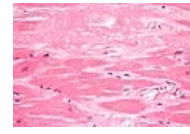
Brzlík-Thymus, H...
783 × 540; 601 KB



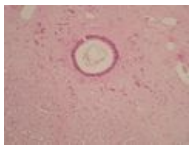
Bílá tuková tkáň ...
1,037 × 778; 106 KB



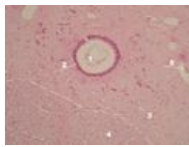
Bílá tuková tkáň ...
1,037 × 778; 82 KB



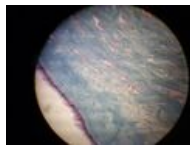
Cardiac amyloido...
4,272 × 2,848; 3.16 MB



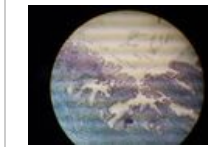
Centrální kanál ...
2,592 × 1,944; 1.45 MB



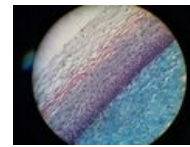
Centrální kanál ...
2,592 × 1,944; 1.38 MB



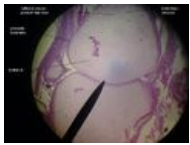
Cervix uteri2.jpg
640 × 480; 102 KB



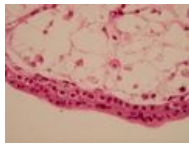
Cervix uteri8.jpg
640 × 480; 103 KB



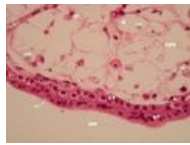
Cervix uteri9.jpg
640 × 480; 141 KB



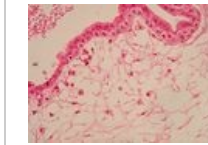
Chondrogenní osi...
815 × 611; 69 KB



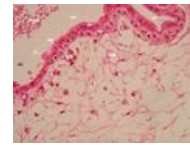
Chorion 4 podkla...
2,592 × 1,944; 1.52 MB



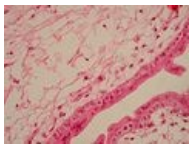
Chorion 4.jpg
2,592 × 1,944; 1.55 MB



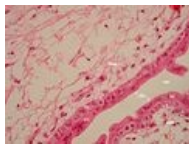
Chorion 6 podkla...
2,592 × 1,944; 1.7 MB



Chorion 6.jpg
2,592 × 1,944; 1.64 MB



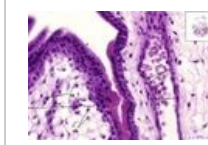
Chorion 7 podkla...
2,592 × 1,944; 1.77 MB



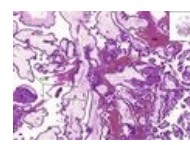
Chorion 7.jpg
2,592 × 1,944; 1.74 MB



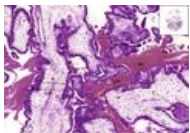
Chorion frondosu...
783 × 540; 248 KB



Chorion frondosu...
783 × 540; 535 KB



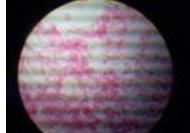
Chorion frondosu...
783 × 540; 718 KB



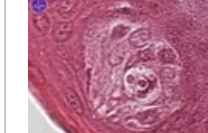
Chorion frondosu...
783 × 540; 738 KB



Chorion3.jpg
640 × 480; 92 KB



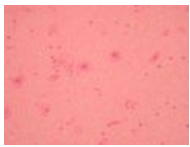
Chorion5.jpg
640 × 480; 85 KB



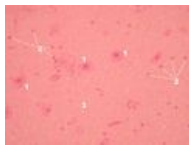
Chuťový pohárek...
597 × 478; 46 KB



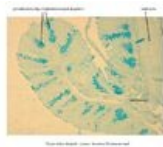
Chámovod 3.jpg
600 × 480; 51 KB



CNS HE podklad.j...
2,592 × 1,944;
1.55 MB



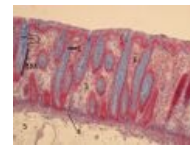
CNS HE - upr.jpg
2,592 × 1,944;
1.49 MB



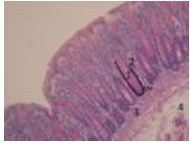
Colon - alcianová...
3,046 × 2,454; 899
KB



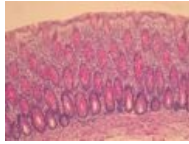
Colon 3lf.jpg
1,037 × 778; 238
KB



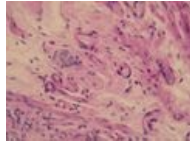
Colon AZAN 3lf.jpg
1,037 × 778; 303
KB



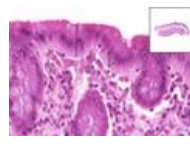
Colon PAS 3lf.jpg
1,037 × 778; 263
KB



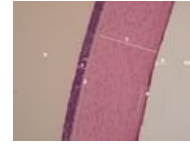
Colon PAS2.jpg
1,037 × 778; 252
KB



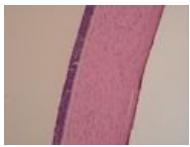
Colon submucos...
1,037 × 778; 179
KB



Colon - HE, 40x.jpg
783 × 540; 469 KB



Cornea - upr.jpg
2,592 × 1,944;
1.23 MB



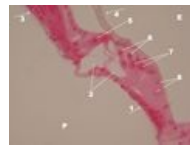
Cornea-original.jpg
2,592 × 1,944;
1.28 MB



Corpus luteum.jpg
3,046 × 2,454;
1.08 MB



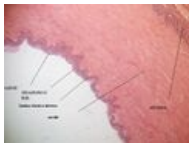
Corpus luteum3.j...
640 × 480; 91 KB



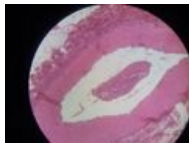
Cortiho orgán 5 -...
2,592 × 1,944;
1.29 MB



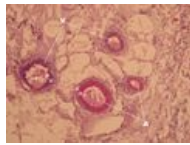
Crista ampularis ...
2,592 × 1,944; 1.3
MB



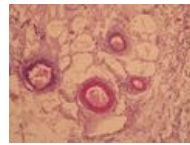
Cévní svazek - el...
640 × 480; 39 KB



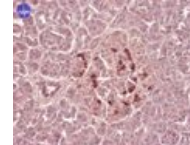
Cévní svazek2.jpg
640 × 480; 90 KB



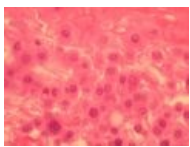
Cévy AZAN upr.jpg
2,592 × 1,944; 1.4
MB



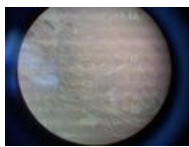
Cévy AZAN-origi...
2,592 × 1,944;
1.45 MB



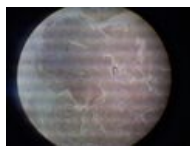
D buňky.jpg
600 × 479; 78 KB



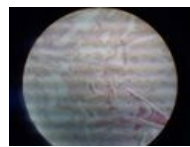
Decidua upr.jpg
2,592 × 1,944;
1.27 MB



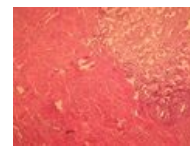
Decidua10.jpg
640 × 480; 70 KB



Decidua6.jpg
640 × 480; 72 KB



Decidua9.jpg
640 × 480; 78 KB



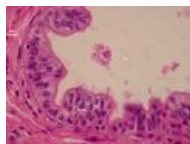
Deloha doplneni ...
1,296 × 972; 549
KB



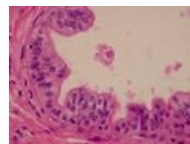
Desmogenní osifi...
1,632 × 1,224; 382
KB



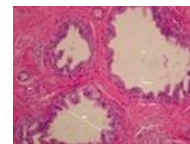
Dorsum linguae.jpg
3,046 × 2,454;
1.09 MB



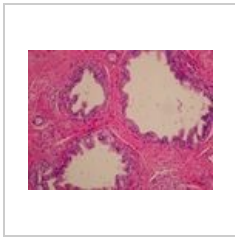
Ductuli efferente...
2,592 × 1,944;
1.54 MB



Ductuli efferente...
2,592 × 1,944;
1.55 MB



Ductuli efferente...
2,592 × 1,944;
1.75 MB



Ductuli efferente...
2,592 × 1,944;
1.81 MB



Ductus deferens ...
1,296 × 972; 154
KB



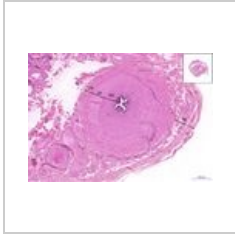
Ductus deferens ...
1,296 × 972; 108
KB



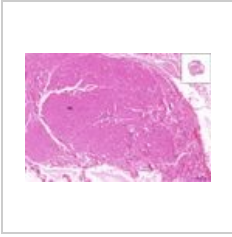
Ductus deferens ...
783 × 540; 260 KB



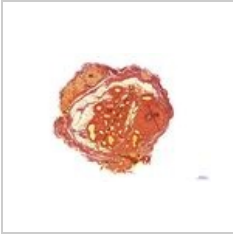
Ductus deferens ...
783 × 540; 677 KB



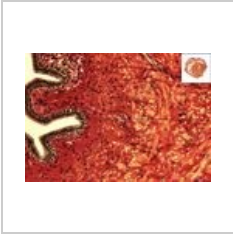
Ductus deferens ...
783 × 540; 576 KB



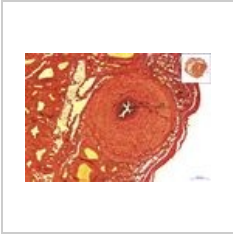
Ductus deferens ...
783 × 540; 674 KB



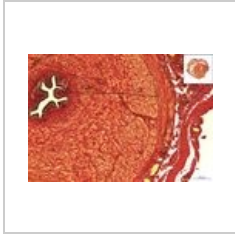
Ductus deferens ...
783 × 540; 396 KB



Ductus deferens ...
783 × 540; 736 KB



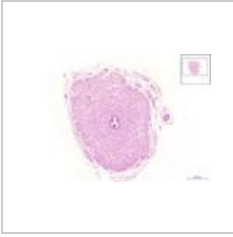
Ductus deferens ...
783 × 540; 769 KB



Ductus deferens ...
783 × 540; 870 KB



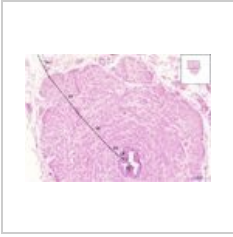
Ductus deferens,...
783 × 540; 623 KB



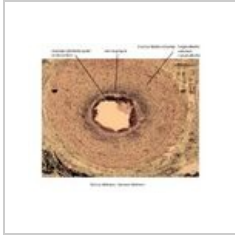
Ductus deferens,...
783 × 540; 341 KB



Ductus deferens,...
783 × 540; 606 KB



Ductus deferens,...
783 × 540; 655 KB



Ductus deferens....
3,046 × 2,454; 1.1
MB



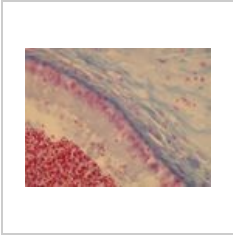
Ductus deferens...
1,296 × 972; 216
KB



Ductus deferens...
1,296 × 972; 287
KB



Ductus deferens...
1,296 × 972; 203
KB



Ductus epididymi...
1,296 × 972; 133
KB

(previous page) (next page)