

# Kategorie:Histologie

## Subcategories

This category has the following 6 subcategories, out of 6 total.

### G

- Galerie preparátů (1 P, 4 F)

### H

- Histologická schémata (6 P, 67 F)
- Histologické praktikum (1. LF UK) (2 P)
- Histologické praktikum (1.LF UK) (7 P, 2 F)
- Histologické preparáty (213 P, 1,416 F)

### S

- Slovník histologie a embryologie (131 P)

## Pages in category "Histologie"

The following 200 pages are in this category, out of 711 total.

(previous page) (next page)

### A

- Agranulocyty
- Akrozomová reakce
- Aktin
- Alveolo-kapilární membrána
- Amnion
- Antrální folikul
- Aorta (preparát)
- Aorta - RF
- Apokrinní žlázy
- Appendix (obrázek)
- Appendix (SFLT)
- Appendix - HE
- Appendix, detail (obrázek)
- *APUD systém*
- Aromatická žláza (obrázek)
- Arteria - zelený trichrom / green trichrom
- Arterie elastická (SFLT)
- Arterie svalová (SFLT)
- Arterie svalová / Muscle artery - HE
- Artérie (histologický preparát, Zelený trichrom)
- Astroblast
- Portál:Atlas histologických preparátů
- Portál:Atlas histologických preparátů/Endokrinní systém
- Portál:Atlas histologických preparátů/GIT
- Portál:Atlas histologických preparátů/Kožní systém
- Portál:Atlas histologických preparátů/Močový systém
- Portál:Atlas histologických preparátů/Mužský pohlavní systém
- Portál:Atlas histologických preparátů/Respirační systém
- Portál:Atlas histologických preparátů/Ženský pohlavní systém
- Autolýza
- Autonomní ganglion (preparát)
- Autonomní ganglion (SFLT)
- Autonomní ganglion / Autonomic ganglion - HE
- Axilla - HE
- Axilla/histologický preparát
- Axon
- AZAN

### B

- B-lymfocyty
- Bakteriální endokarditis (preparát)
- Barvení hematoxylin-eosin
- Barvení na myelin
- Barvení podle Giemsy
- Barvení ve světelné mikroskopii
- Barvicí metody (1. LF UK)
- Bazofilní erythroblast
- Bazální buňky
- Bazální lamina
- Billrothovy provazce
- Biologická membrána
- Biologická membrána a transport látek přes biologickou membránu
- Biomechanika
- Biomechanika svalového stahu
- Biopsie
- Bronchioly (histologie)
- Bronchus (preparát)
- Bronchus segmentalis (histologický preparát)
- Bronchus segmentalis (SFLT)
- Bronchus segmentalis - HE
- Bronchus - HE
- Bronchy (histologie)
- Brzlík
- Brzlík / Thymus - HE
- Bulbus oculi (SFLT)
- Bulbus oculi - HE
- Buněčná membrána
- Buněčná spojení
- Buněčné inkluze
- Buněčné jádro
- Buňka
- Bílý tuk (preparát)

## C

- Capsula fibrosa
- Cementum
- Cerebellum (SFLT)
- Chlupy a vlasy
- Chondrocyt
- Chondrogenní a desmogenní osifikace (praktikum) (1. LF UK)
- Chorion
- Chorion frondosum (SFLT)
- Chorion frondosum - HE
- Chrupavka
- Chuťové receptory
- Chámovod
- Clarovy buňky
- Colon (obrázek)
- Colon (SFLT)
- Corpus luteum
- Corpus luteum - HE
- Cortex renalis
- Cortiho orgán
- Cyklické změny v ženském těle
- Cytoarchitektonika mozkové kůry
- Cytocentrum
- Cytokeratin
- Cytologická barvení
- Cytoskelet
- Cévy

## D

- Decidua (heslo)
- Degradační systém buňky
- Dendritické buňky
- Dentinové tubuly
- Dentinum
- Difusní endokrinní systém
- *Difúzní neuroendokrinní systém*
- Dorsum linguae (obrázek)
- Ductus deferens (obrázek)
- Ductus deferens (SFLT)

- Ductus deferens - HE
- Ductus omphaloentericus
- Duodenum (obrázek)
- Duodenum (SFLT)
- Duodenum - HE
- Dusičnan stříbrný
- Dutina nosní (histologie)
- Portál:Dýchací systém
- Procvičování:Dýchací systém
- Dýchací systém (histologie)
- Dýchací řetězec a tvorba ATP (FBLT)
- Děloha
- Děloha (preparát)
- Děloha / Uterus - HE

## E

- Ekrinní potní žlázy
- Elastická arterie / Elastic artery (aorta) - HE
- Elastická arterie / Elastic artery (aorta) - WRF
- Elastická artérie (histologický preparát)
- Elastická chrupavka (obrázek)
- Elastin
- Portál:Embryologické preparáty
- Enamelum
- Endocytóza
- Endokard
- Endokrinní orgány
- Endoplazmatické retikulum
- Endost
- Energetický systém buňky
- Enterocyt
- Eozinofilní granulocyt
- Epididymis - HE
- Epifýza
- Epiglottis (histologický preparát)
- Epiglottis (preparát)
- Epiglottis (SFLT)
- Epiglottis - HE
- Epiglottis - RF
- Epikard
- Epitel
- Epitelie (patobiochemie)
- Erytropoeza

## F

- Fetální plíce (histologický preparát)
- Fetální plíce (SFLT)
- Fetální plíce / Fetal lung
- Fundus (histologický preparát)
- Funiculus spermaticus (obrázek)
- Funiculus spermaticus (SFLT)
- Funiculus spermaticus - HE
- Fyziologické hodnoty krevních elementů

## G

- Gametogeneze
- Gaster - cardia (SFLT)
- Gaster - fundus (SFLT)
- GER (rozcestník)
- Gl. sublingualis (SFLT)
- Gl. submandibularis (SFLT)
- Glandula parathyroidea (histologický preparát)
- Glandula parathyroidea (SFLT)
- Glandula parathyroidea - HE
- Glandula parotis
- Glandula parotis (obrázek)
- Glandula parotis (SFLT)
- Glandula parotis - HE
- Glandula parotis, detail (obrázek)
- Glandula sublingualis
- Glandula sublingualis (obrázek)
- Glandula sublingualis - HE

- Glandula sublingualis - HE
- Glandula sublingualis, detail (obrázek)
- Glandula submandibularis
- Glandula submandibularis (obrázek)
- Glandula submandibularis - HE
- Glandula submandibularis, detail (obrázek)
- Glandula suprarenalis (SFLT)
- Glandula suprarenalis - AZAN
- Glandula suprarenalis - HE
- Glandula thyroidea (SFLT)
- Glandulae vesiculosae
- Golgiho aparát
- Golgiho šlachové tělísko
- Graafův folikul
- Granulocyty
- *Granulární pneumocyt*

## H

- Uživatelka: Haninna/Pískoviště
- Hematoencefalická bariéra
- Hematopoeza (rozcestník)
- Hemopoeza (praktikum) (1. LF UK)
- Heparansulfát
- Histiocyt
- Histochemie
- Procvičování: Histologické barvení
- Portál: Histologické praktikum (1. LF UK)
- Portál: Histologický atlas (3. LF UK)
- Histologický atlas 3. LF UK – modul A
- Histologický atlas 3. LF UK – modul B
- Histologický průkaz mikroorganismů

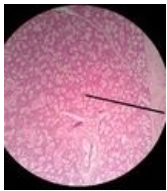
(previous page) (next page)

## Media in category "Histologie"

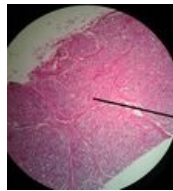
The following 200 files are in this category, out of 548 total.

(previous page) (next page)

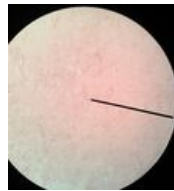
				
01 Svalova arteri... 1,920 × 2,068; 933 KB	02 Ledvina.jpg 1,920 × 2,137; 1.09 MB	03 Stitna zláza.jpg 1,920 × 1,920; 1.28 MB	04 Tluste strevo.j... 1,920 × 2,127; 1.03 MB	05 a Vejcovod 10... 1,920 × 2,073; 1.17 MB
				
05 b Vejcovod 40... 1,920 × 1,950; 1.24 MB	06 Bronchus.jpg 1,920 × 2,112; 1.14 MB	07 Mocovy mech... 1,920 × 2,004; 852 KB	08 Kuze bricha.jpg 1,812 × 1,876; 973 KB	09 Jicen.jpg 1,920 × 2,058; 1.19 MB
				
10 Vagina.jpg 1,920 × 2,186; 1.07 MB	11 Plíce.jpg 1,876 × 2,210; 1 MB	12 Tenke strevo.j... 1,920 × 2,279; 1.26 MB	13 Pankreas.jpg 1,915 × 2,206; 1.3 MB	14 Parotis.jpg 1,920 × 2,201; 1.49 MB



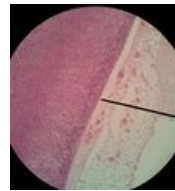
15 Submandibula...  
1,910 × 2,191;  
1.41 MB



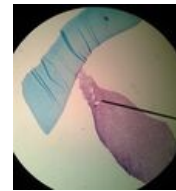
16 Mamma lacta...  
1,910 × 2,107;  
1.49 MB



17 Mamma nonla...  
1,920 × 2,087; 849  
KB



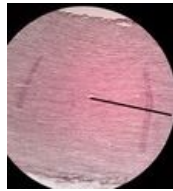
18 Nadledvina.jpg  
1,920 × 2,092;  
1.37 MB



19 Mesenchym 4...  
1,920 × 2,087; 952  
KB



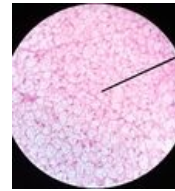
20 Pupecnik 40x ...  
1,920 × 2,171;  
1.05 MB



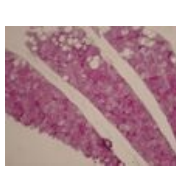
21 Aorta.jpg  
1,920 × 2,117;  
1.61 MB



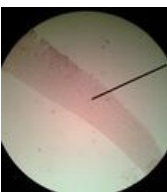
22 a Hnedy tuk 1...  
1,920 × 2,196;  
1.33 MB



22 b Hnedy tuk 4...  
1,920 × 2,137;  
1.16 MB



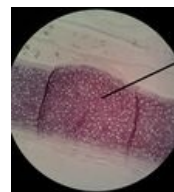
22 c Hnědý tuk .jpg  
1,037 × 778; 233  
KB



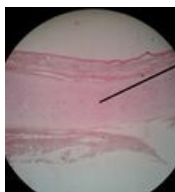
24 Kloubni chrup...  
1,920 × 2,132; 772  
KB



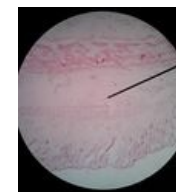
25 a Epiglottis RF...  
1,920 × 2,206; 974  
KB



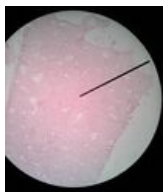
25 b Epiglottis RF...  
1,920 × 2,176;  
1.01 MB



26 Epiglottis HE.jpg  
1,920 × 1,984; 819  
KB



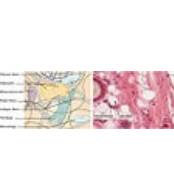
27 Desmogenni ...  
1,920 × 2,220; 912  
KB



29 a lamelosni k...  
1,895 × 2,225; 922  
KB



29 b lamelosni k...  
1,920 × 2,191; 973  
KB



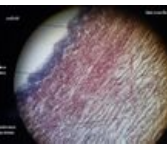
408 Connective T...  
1,212 × 375; 358  
KB



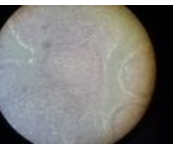
Alveolo-kapilární ...  
1,286 × 1,238; 439  
KB



Anus1.jpg  
640 × 480; 88 KB



Aorta podelne - e...  
640 × 480; 54 KB



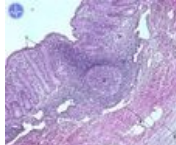
Aorta pricne 2.jpg  
640 × 480; 114 KB



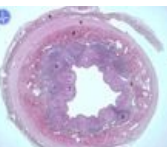
Aorta RF 3.jpg  
1,037 × 778; 171  
KB



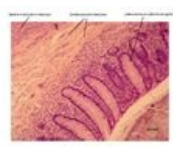
Aorta RF 4.jpg  
1,037 × 778; 226  
KB



Apendix 2.jpg  
600 × 480; 96 KB



Apendix.jpg  
600 × 480; 42 KB



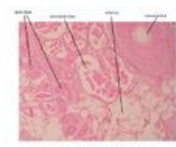
Appendix - detail...  
3,046 × 2,454;  
1.11 MB



Appendix2.jpg  
1,595 × 1,275; 303  
KB



Appendix3 -a.jpg  
640 × 480; 51 KB

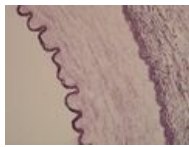


Aromatická žláza...  
3,046 × 2,454; 807  
KB

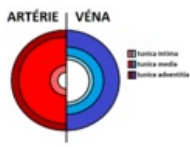




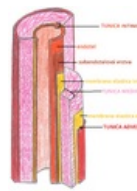
Arterie svalová H...  
1,037 × 778; 196  
KB



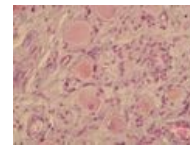
Arterie svalová R...  
1,037 × 778; 167  
KB



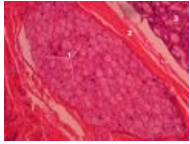
Arterie vena.png  
798 × 606; 26 KB



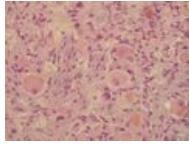
Arterie vena2.png  
1,248 × 1,532;  
1.99 MB



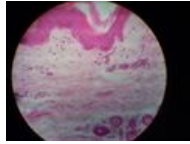
Autonomní gangl...  
1,037 × 778; 191  
KB



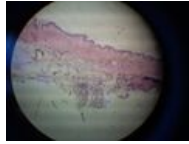
Autonomní gangl...  
2,592 × 1,944;  
1.88 MB



Autonomní gangl...  
1,037 × 778; 204  
KB



Axilla 5.jpg  
640 × 480; 79 KB



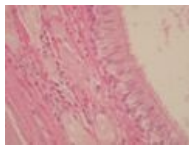
Axilla 6.jpg  
640 × 480; 71 KB



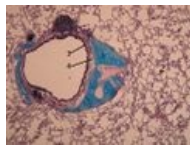
Bloudivé buňky.jpg  
1,187 × 474; 124  
KB



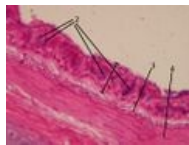
Bronchiolus.jpg  
1,037 × 778; 214  
KB



Bronchus 3lf.jpg  
1,037 × 778; 141  
KB



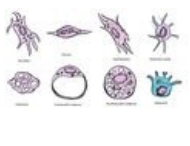
Bronchus 6.jpg  
1,037 × 778; 329  
KB



Bronchus2.jpg  
1,037 × 778; 193  
KB



Bronchus4.jpg  
1,037 × 778; 235  
KB



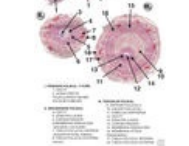
Buňky fixní.jpg  
1,673 × 930; 309  
KB



Bílá tuková tkáň ...  
1,037 × 778; 106  
KB



Bílá tuková tkáň ...  
1,037 × 778; 82  
KB



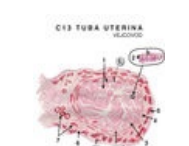
C11 detail.jpg  
1,600 × 2,264;  
1.42 MB



C11 Ovarium.jpg  
1,600 × 2,264;  
1.59 MB



C12 Corpus luteu...  
1,600 × 2,264;  
1.51 MB



C13 Tuba uterina...  
1,600 × 2,264;  
1.51 MB



C14 Corpus uteri...  
595 × 842; 329 KB



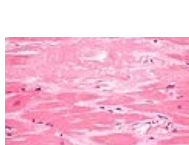
C15 Cervix uteri.j...  
1,600 × 2,264;  
1.42 MB



C16 Vagina.jpg  
1,600 × 2,264;  
1.16 MB



C17 Endometriu...  
1,600 × 2,264; 785  
KB



Cardiac amyloido...  
4,272 × 2,848;  
3.16 MB



Cervix uteri2.jpg  
640 × 480; 102 KB



Cervix uteri8.jpg  
640 × 480; 103 KB



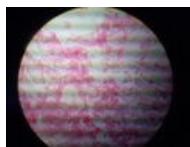
Cervix uteri9.jpg  
640 × 480; 141 KB



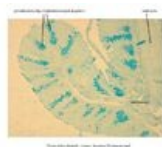
Chondrogenní osi...  
815 × 611; 69 KB



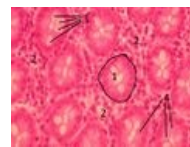
Chorion3.jpg  
640 × 480; 92 KB



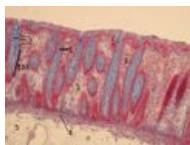
Chorion5.jpg  
640 × 480; 85 KB



Colon - alciánová...  
3,046 × 2,454; 899 KB



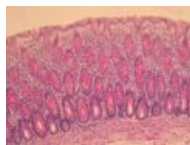
Colon 3lf.jpg  
1,037 × 778; 238 KB



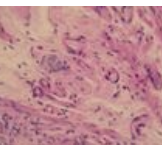
Colon AZAN 3lf.jpg  
1,037 × 778; 303 KB



Colon PAS 3lf.jpg  
1,037 × 778; 263 KB



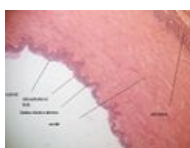
Colon PAS2.jpg  
1,037 × 778; 252 KB



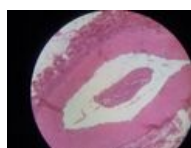
Colon submucos...  
1,037 × 778; 179 KB



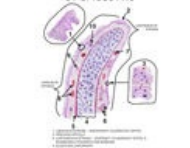
Corpus luteum3.j...  
640 × 480; 91 KB



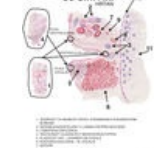
Cévní svazek - el...  
640 × 480; 39 KB



Cévní svazek2.jpg  
640 × 480; 90 KB



D1 Epiglottis.jpg  
1,600 × 2,264;  
1.29 MB



D2 Larynx.jpg  
1,600 × 2,264;  
1.32 MB



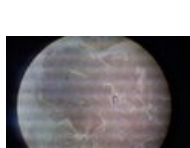
D3 Trachea.jpg  
1,600 × 2,264; 915 KB



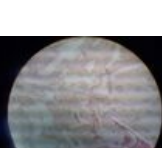
D4 Pulmo.jpg  
1,600 × 2,264; 603 KB



Decidua10.jpg  
640 × 480; 70 KB



Decidua6.jpg  
640 × 480; 72 KB



Decidua9.jpg  
640 × 480; 78 KB



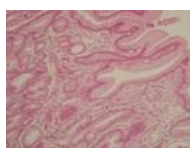
Deloha doplneni ...  
1,296 × 972; 549 KB



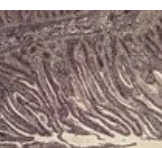
Desmogenní osifi...  
1,632 × 1,224; 382 KB



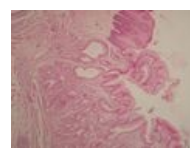
Duodenum - a.jpg  
640 × 480; 37 KB



Duodenum 4.jpg  
1,296 × 972; 192 KB



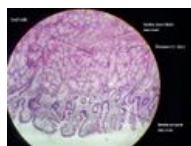
Duodenum Ag 3.j...  
2,592 × 1,944;  
2.54 MB



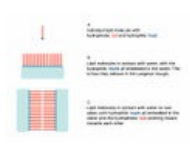
Duodenum1.jpg  
1,296 × 972; 183 KB



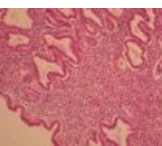
Duodenum3 -a.jpg  
640 × 480; 47 KB



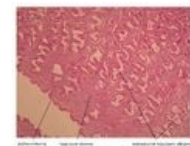
Duodenum4 -a.jpg  
640 × 480; 60 KB



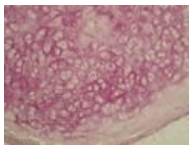
Dvojvrstva.jpg  
569 × 398; 45 KB



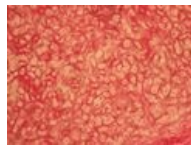
Děloha 2.jpg  
1,037 × 778; 280 KB



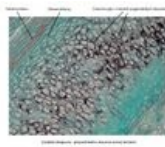
Děloha 3lf.jpg  
1,100 × 900; 331 KB



Elastická chrupa...  
1,037 × 778; 207 KB



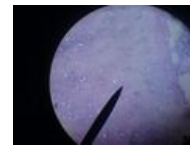
Elastická chrupa...  
1,037 × 778; 231 KB



Elastická chrupa...  
3,046 × 2,454; 1.02 MB



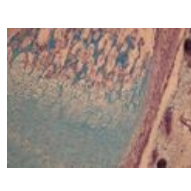
Elastická chrupa...  
651 × 490; 52 KB



Elastická chrupa...  
1,632 × 1,224; 384 KB



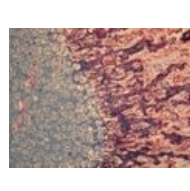
Enamelmineraliz...  
904 × 936; 392 KB



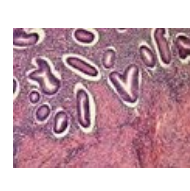
Enchondrální osif...  
1,037 × 778; 260 KB



Enchondrální osif...  
1,037 × 778; 291 KB



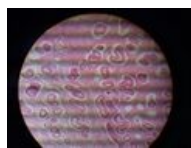
Enchondrální osif...  
1,037 × 778; 333 KB



Endometrium a ...  
2,592 × 1,944; 1.63 MB



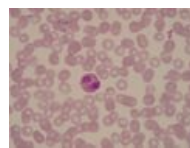
Endometrium a ...  
2,592 × 1,944; 1.51 MB



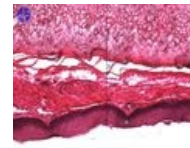
Endometrium2.jpg  
640 × 480; 115 KB



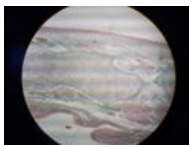
Endometrium3.jpg  
640 × 480; 121 KB



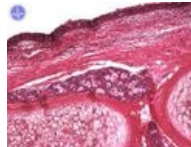
Eo 2.jpg  
1,037 × 778; 117 KB



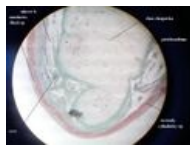
Epiglottis 22.jpg  
600 × 480; 67 KB



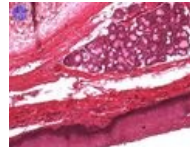
Epiglottis1 - rozdi...  
640 × 480; 88 KB



Epiglottis11.jpg  
600 × 480; 72 KB



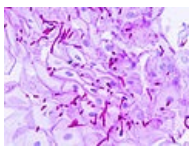
Epiglottis4 -a.jpg  
640 × 480; 37 KB



Epiglottis7.jpg  
600 × 480; 74 KB



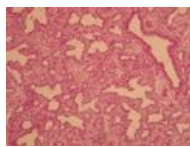
Epitel dýchacích ...  
2,116 × 1,413; 1.23 MB



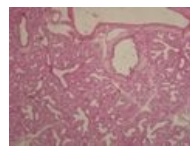
Esophageal cand...  
4,080 × 3,072; 1.14 MB



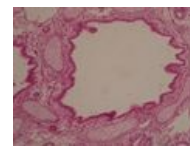
F1 cor.jpg  
1,175 × 1,275; 275 KB



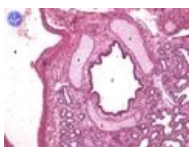
Fetální plíce 1.jpg  
1,296 × 972; 242 KB



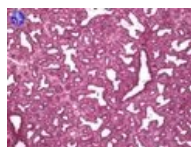
Fetální plíce 2.jpg  
1,296 × 972; 194 KB



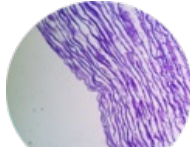
Fetální plíce bron...  
2,592 × 1,944; 1.63 MB



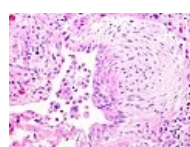
Fetální plíce.jpg  
600 × 480; 63 KB



Fetální plíce1 2.jpg  
600 × 480; 80 KB



Fibras elasticas.p...  
3,234 × 2,895; 8.88 MB

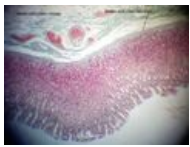


Fibroblast focus.jpg  
2,040 × 1,536; 2.08 MB

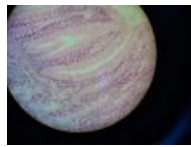


Fotografie0023.jpg  
640 × 480; 44 KB

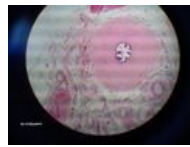




Fundus žaludku -...  
640 × 480; 56 KB



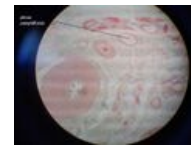
Fundus žaludku4...  
640 × 480; 94 KB



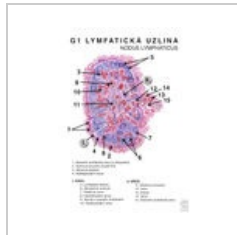
Funiculus sperm...  
640 × 480; 35 KB



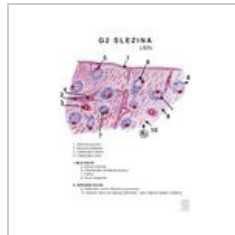
Funiculus sperm...  
640 × 480; 76 KB



Funiculus sperm...  
640 × 480; 31 KB



G1.jpg  
1,600 × 2,264; 533 KB



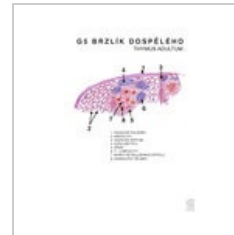
G2.jpg  
1,600 × 2,264; 565 KB



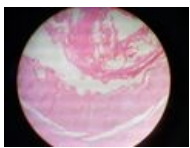
G3.jpg  
1,600 × 2,264; 412 KB



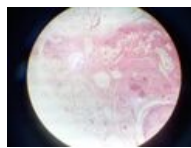
G4.jpg  
1,600 × 2,264; 1.44 MB



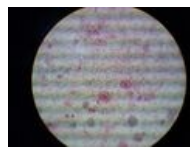
G5-Brzlík-dospělé...  
1,600 × 2,264; 315 KB



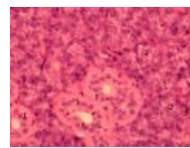
Ggl.cerebrospina...  
640 × 480; 89 KB



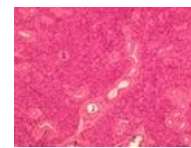
Ggl.vegetativni 3...  
640 × 480; 84 KB



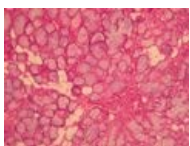
Ggl.vegetativni 4...  
640 × 480; 81 KB



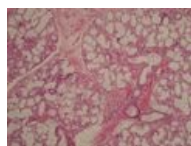
Gl parotis 4.jpg  
1,037 × 778; 241 KB



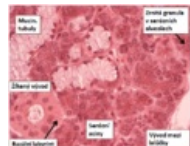
Gl parotis9.jpg  
1,037 × 778; 349 KB



Gl sublingualis Z...  
1,296 × 972; 233 KB



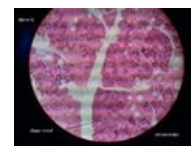
Gl submandibula...  
1,037 × 778; 276 KB



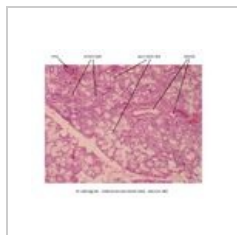
Glandula parotis ...  
472 × 379; 431 KB



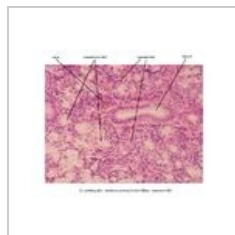
Glandula parotis...  
640 × 480; 128 KB



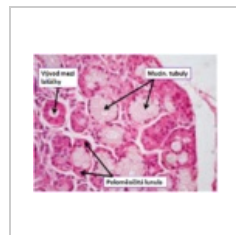
Glandula parotis...  
640 × 480; 48 KB



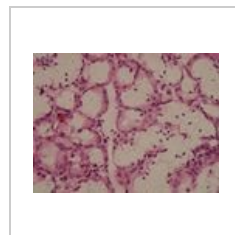
Glandula subling...  
3,046 × 2,454; 974 KB



Glandula subling...  
3,046 × 2,454; 861 KB



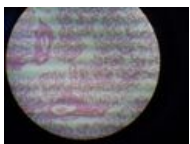
Glandula subling...  
451 × 340; 390 KB



Glandula subling...  
1,296 × 972; 174 KB



Glandula subling...  
640 × 480; 115 KB



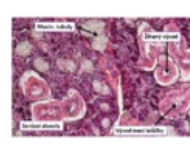
Glandula subling...  
640 × 480; 101 KB



Glandula subling...  
640 × 480; 29 KB



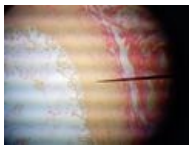
Glandula subling...  
640 × 480; 113 KB



Glandula subman...  
513 × 344; 500 KB



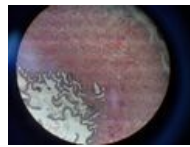
Glandula subman...  
640 × 480; 114 KB



Glandula vesicul...  
640 × 480; 91 KB



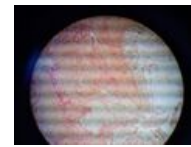
Glandula vesicul...  
640 × 480; 114 KB



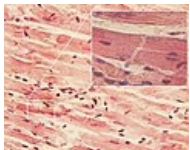
Glandula vesicul...  
640 × 480; 101 KB



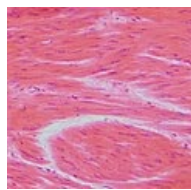
Glandula vesicul...  
640 × 480; 81 KB



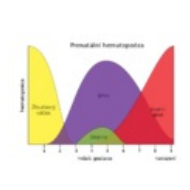
Glandula vesicul...  
640 × 480; 96 KB



Glanzstreifen.jpg  
1,280 × 1,024; 456 KB



Glatte Muskelzell...  
619 × 611; 136 KB



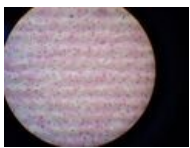
Hematopoesa.svg  
512 × 362; 4 KB



Hepar PAS 6 -a.jpg  
640 × 480; 41 KB



Hepar1 -a.jpg  
640 × 480; 24 KB



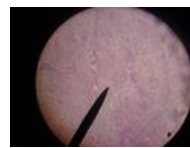
Hepar3.jpg  
640 × 480; 81 KB



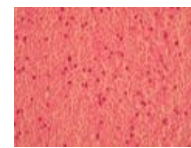
Historický stereo...  
417 × 326; 121 KB



Hladká svalovina...  
3,046 × 2,454; 693 KB



Hladké svalstvo2...  
1,632 × 1,224; 440 KB



Hladký sval 3.jpg  
1,037 × 778; 213 KB



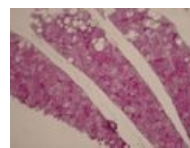
Hladký sval 4.jpg  
1,037 × 778; 120 KB



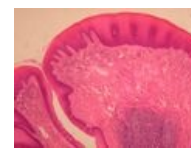
Hladký sval.jpg  
1,037 × 778; 149 KB



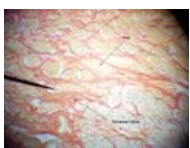
Hladký sval2.jpg  
1,037 × 778; 133 KB



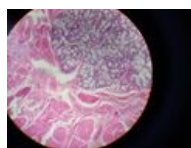
Hnědý tuk 6.jpg  
1,037 × 778; 233 KB



Hrazená papila 4...  
1,296 × 972; 171 KB



Hrot jazyka - Wei...  
640 × 479; 59 KB



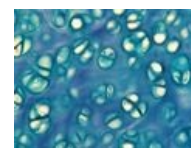
Hrot jazyka4 - jaz...  
640 × 480; 122 KB



Hyalinní chrupav...  
650 × 488; 50 KB



Hyalinní chrupav...  
1,037 × 778; 115 KB



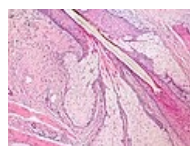
Hyalinní chrupav...  
1,037 × 778; 167 KB



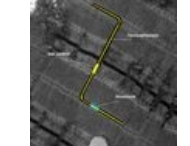
Hyalinní chrupav...  
3,046 × 2,454; 728 KB



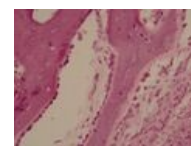
Hypofyza1 - HE.jpg  
640 × 480; 61 KB



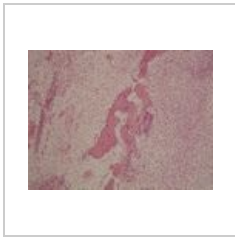
Insertion of seba...  
2,048 × 1,536;  
1.04 MB



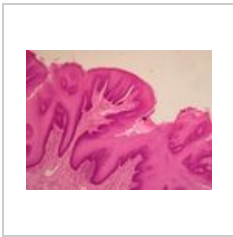
Interkalar disk.jpg  
645 × 813; 190 KB



Intramembranos...  
1,037 × 778; 158 KB



Intramembranos...  
1,037 × 778; 283  
KB



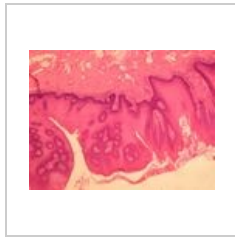
Jazyk houbovitá ...  
1,296 × 972; 152  
KB



Jazyk nitkovitá p...  
1,296 × 972; 187  
KB



Jazyk nitkovitá p...  
1,296 × 972; 193  
KB



Jazyk papily 2.jpg  
1,296 × 972; 199  
KB

(previous page) (next page)