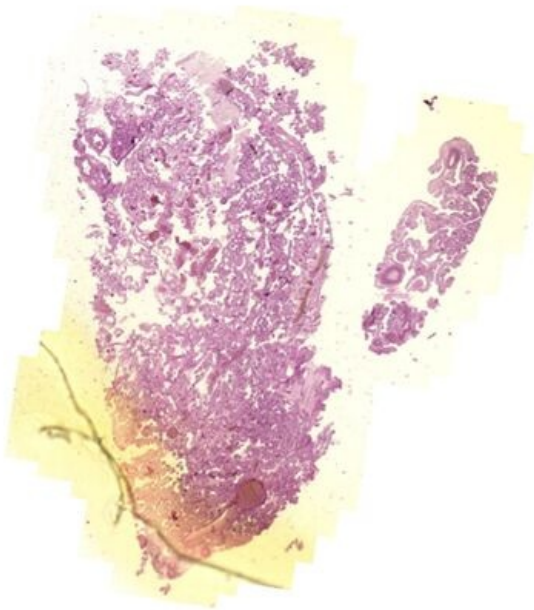


# Plexus choroideus - HE

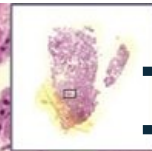
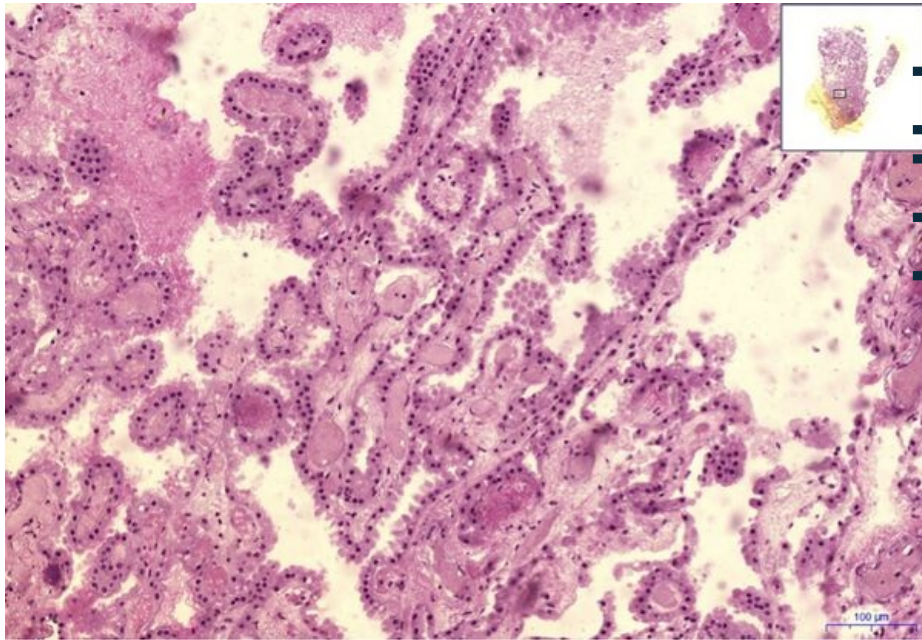
## Plexus choroideus - HE 0,6x



### Plexus choroideus:

- **1) EK** - epitel kubický / cuboidal epithelium
- **2) C** - céva/blood vessel
- **3) FK** - fenestrovaná kapilára / fenestrated capillary
- **4) PM** - pia mater (řidké vazivo / loose connective tissue)
- **5)K** - konkrement/concrement (acervulus cerebri)

## Plexus choroideus - HE 10x



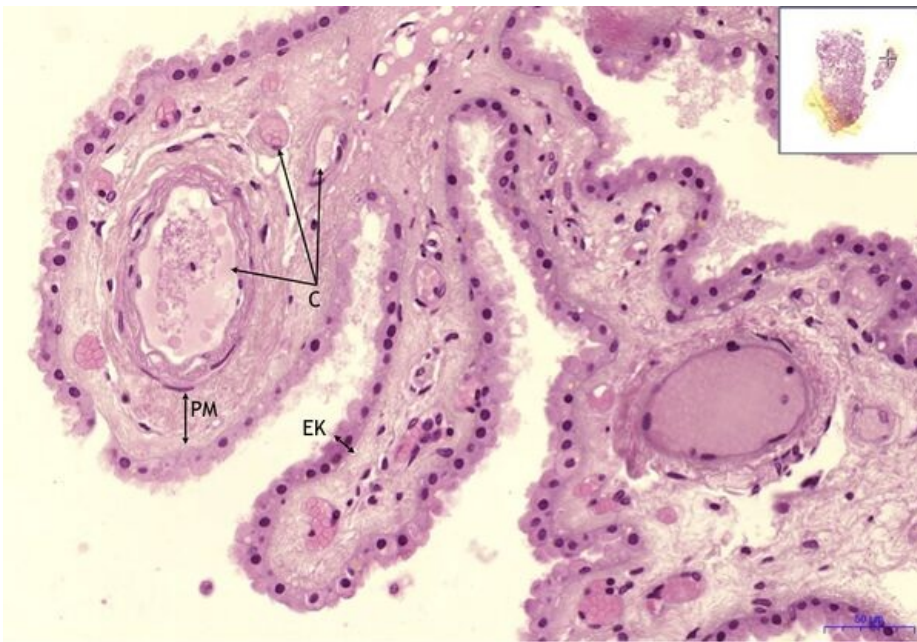
### Plexus choroideus:

- **1) EK** - epitel kubický / cuboidal epithelium
- **2) C** - céva/blood vessel
- **3) FK** - fenestrovaná kapilára / fenestrated capillary
- **4) PM** - pia mater (řidké vazivo / loose connective tissue)
- **5)K** - konkrement/concrement (acervulus cerebri)

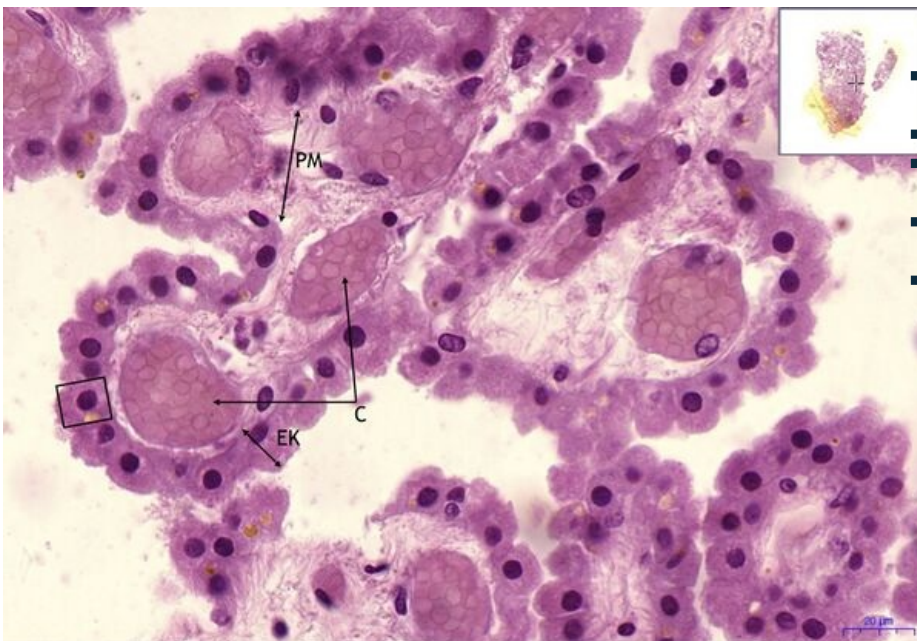
## Plexus choroideus - HE 20x

### Plexus choroideus:

- **1) EK** - epitel kubický / cuboidal epithelium
- **2) C** - céva/blood vessel
- **3) FK** - fenestrovaná kapilára / fenestrated capillary
- **4) PM** - pia mater (řidké vazivo / loose connective tissue)
- **5)K** - konkrement/concrement (acervulus cerebri)



## Plexus choroideus - HE 20x



### Plexus choroideus:

- **1) EK** - epitel kubický / cuboidal epithelium
- **2) C** - céva/blood vessel
- **3) FK** - fenestrovaná kapilára / fenestrated capillary
- **4) PM** - pia mater (řidké vazivo / loose connective tissue)
- **5) K** - koncrement/concrement (acervulus cerebri)

## Navigace

### Navigace: Nervový systém / Nervous system

← Preparát  
N6

Seznam  
preparátů

Preparát N8  
→