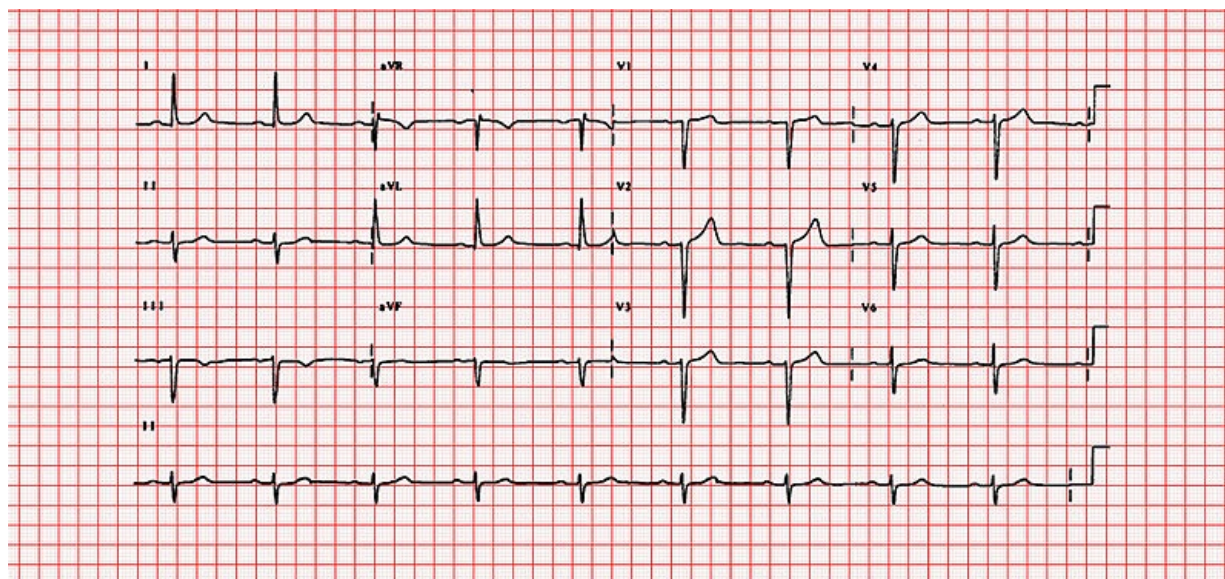


Soubor:21 (CardioNetworks ECGpedia).jpg



This image can contain annotations.
Move the mouse over the image to display.
Size of this preview: 800 × 374 pixels.

Original file (2,897 × 1,355 pixels, file size: 4.82 MB, MIME type: image/jpeg)


 **Open in Media Viewer** 

This file is from Wikimedia Commons and may be used by other projects. The description on its file description page there is shown below.

Popis kartičky

sinusový rytmus; prodloužený interval PR (>200ms), sklon srdeční osy doleva (-30 ° stupňů); AV blok I. stupně; levý přední hemiblok

Summary

Description	<p>The rhythm is sinus. The PR interval is prolonged (>200ms) and the QRS is a left ward axis (<-30 degrees).</p> <p>The EKG shows a first degree heart block and a left anterior fascicular block.</p>
Date	2012
Source	EKG World Encyclopedia http://cme.med.mcgill.ca/php/index.php , courtesy of Michael Rosengarten BEng, MD.McGill
Author	Michael Rosengarten BEng, MD.McGill
Permission (Reusing this file)	<p>CardioNetworks the copyright owner of the works at en.ecgpedia.org, pcipedia.org and echopedia.org agrees to publish these works under the license below:</p> <p>Note: this does not apply to any of the works at https://en.ecgpedia.org/wiki/Rhythm_Puzzles and images with a different license as mentioned in the image description.</p> <p>This file is licensed under the Creative Commons Attribution-Share Alike 3.0 Unported (https://creativecommons.org/licenses/by-sa/3.0/deed.en) license.</p> <p>You are free:</p> <ul style="list-style-type: none">▪ to share – to copy, distribute and transmit the work▪ to remix – to adapt the work <p> Under the following conditions:</p>



- **attribution** – You must give appropriate credit, provide a link to the license, and indicate if changes were made. You may do so in any reasonable manner, but not in any way that suggests the licensor endorses you or your use.
- **share alike** – If you remix, transform, or build upon the material, you must distribute your contributions under the same or compatible license (<https://creativecommons.org/share-your-work/licensing-considerations/compatible-licenses>) as the original.

This work is **free** and may be used by anyone for any purpose. If you wish to **use this content**, you do not need to request permission as long as you follow any licensing requirements mentioned on this page.



The Wikimedia Foundation has received an e-mail confirming that the copyright holder has approved publication under the terms mentioned on this page. This correspondence has been **reviewed** by a **Volunteer Response Team (VRT) member** and stored in our **permission archive**. The correspondence is available to trusted volunteers as **ticket #2011102310008874**.

If you have questions about the archived correspondence, please use the **VRT noticeboard**. Ticket link: <https://ticket.wikimedia.org/otrs/index.pl?Action=AgentTicketZoom&TicketNumber=2011102310008874>

Find other files from the same ticket:

CardioNetworks Source

21.jpg (<http://en.ecgpedia.org/wiki/File:21.jpg>)



Attribution information, such as the author's name, e-mail, website, or signature, that was once visible in the image itself has been **moved into the image metadata and/or image description page**. This makes the image easier to reuse and more language-neutral, and makes the text easier to process and search for. Commons discourages placing visible author information in images.

ECGpedia Original upload log

Original upload log for 21.jpg (<http://en.ecgpedia.org/wiki/File:21.jpg>) from CardioNetworks ECGpedia

Date/Time	Dimensions	User	Comment
06:11, 21 February 2012 (http://en.ecgpedia.org/images/0/03/21.jpg)	3,004 × 1,599 (4.44 MB)	DarrelC (http://en.ecgpedia.org/index.php?title=User:DarrelC&action=edit&redlink=1) (Talk (http://en.ecgpedia.org/index.php?title=User_talk:DarrelC&action=edit&redlink=1) • Contrib (http://en.ecgpedia.org/wiki/Special:Contributions/DarrelC))	

File history

Click on a date/time to view the file as it appeared at that time.

	Date/Time	Thumbnail	Dimensions	User	Comment
current	11:53, 8 February 2014		2,897 × 1,355 (4.82 MB)	wikimediacommons>Cropbot	upload cropped version, operated by User:Andy king50. Summary: cropped

File usage

There are no pages that use this file.

Metadata

This file contains additional information, probably added from the digital camera or scanner used to create or digitize it.

If the file has been modified from its original state, some details may not fully reflect the modified file.

Camera manufacturer	HP
Camera model	HP Scanjet G3110
Date and time of data generation	23:31, 2 May 2009

