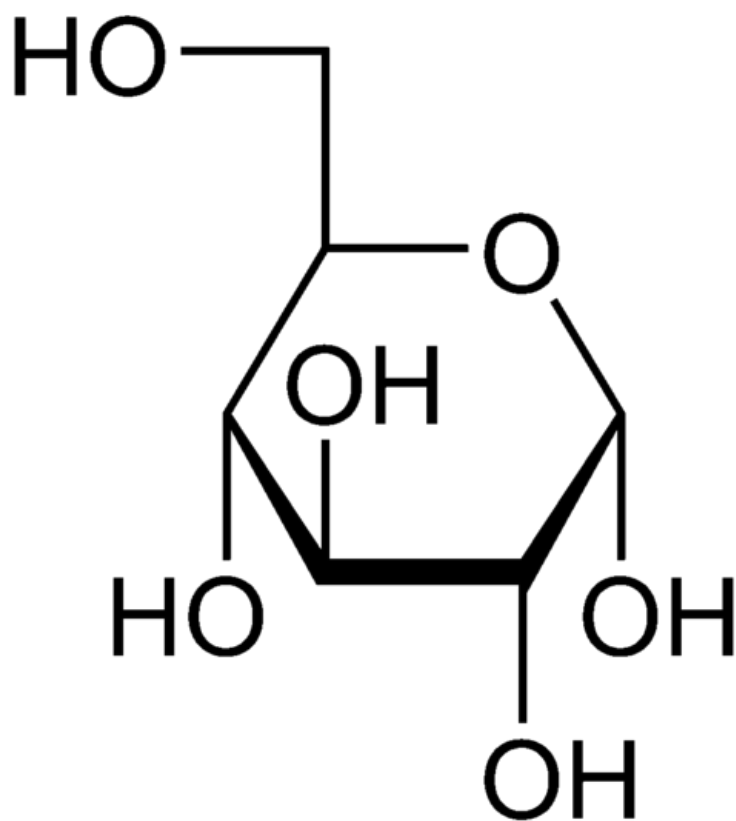


Soubor:Alpha-D-glucose Haworth formula.png



This image can contain annotations.
Move the mouse over the image to display.
Size of this preview: 546 × 599 pixels.

Original file (1,022 × 1,122 pixels, file size: 5 KB, MIME type: image/png)

 **Open in Media Viewer** 

This file is from Wikimedia Commons and may be used by other projects. The description on its file description page there is shown below.

Popis kartičky

D-glukóza



This *chemical* image could be re-created **using vector graphics as an SVG file**. This has several advantages; see Commons:Media for cleanup for more information. If an SVG form of this image is available, please upload it and afterwards replace this template with `{{vector version available|new image name}}`.

It is recommended to name the SVG file “Alpha-D-glucose Haworth formula.svg”—then the template Vector version available (or Vva) does not need the *new image name* parameter.

Description	Haworth formula of <i>beta</i> -D-glucose
Date	4 September 2008
Source	Own work
Author	Cacycle
Permission (Reusing this file)	I, the copyright holder of this work, release this work into the public domain . This applies worldwide.



In some countries this may not be legally possible; if so:

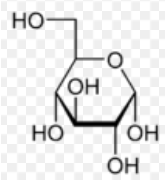
*I grant anyone the right to use this work **for any purpose**, without any conditions, unless such conditions are required by law.*

Comments

High-resolution black/white .PNG made with ChemDraw and IrfanView — see WikiProject Chemistry - structure drawing for detailed instructions. Please drop me a note if you need the source file.

File history

Click on a date/time to view the file as it appeared at that time.

	Date/Time	Thumbnail	Dimensions	User	Comment
current	04:51, 7 September 2008		1,022 × 1,122 (5 KB)	wikimediacommons>Cacycle	{ { Information Description=Haworth formula of "beta"-<small>D</small>-glucose Source=Selfmade Date= 4 September 2008 Author=Cacycle Permission= { {GFDL-self-no-disclaimers}} } <!-- see [[Wikipedia:GFDL_

File usage

There are no pages that use this file.