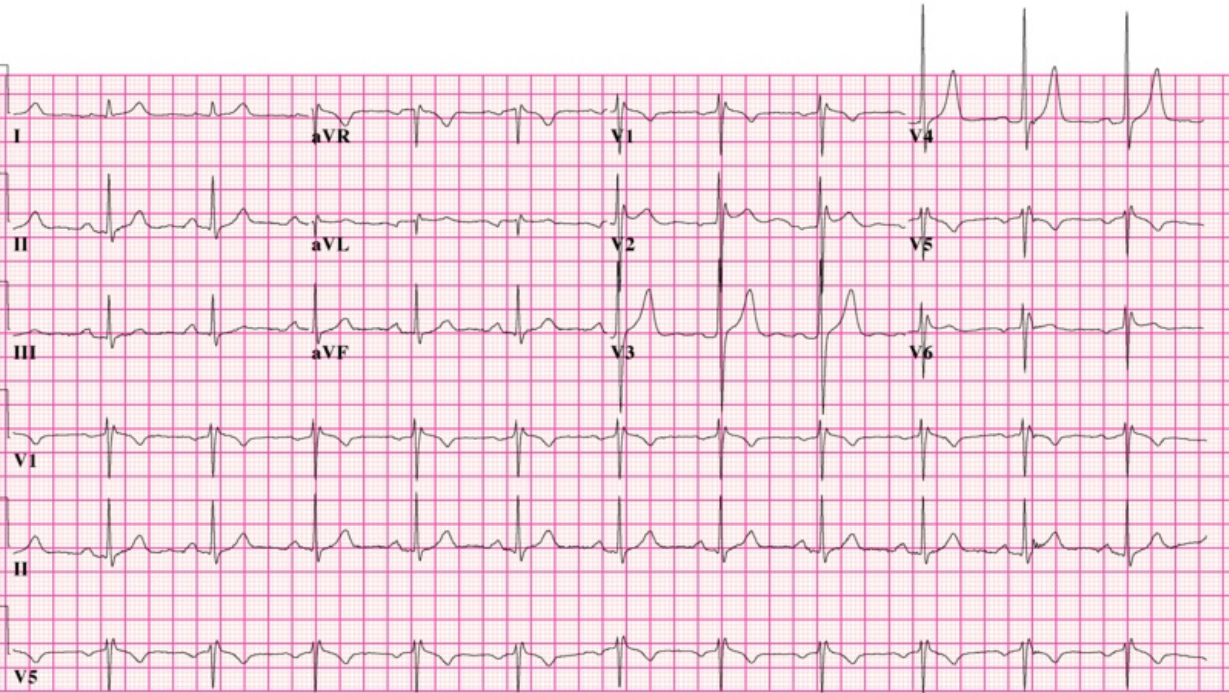


Soubor:Brugada syndrome type2 example1 (CardioNetworks ECGpedia).png



This image can contain annotations.
Move the mouse over the image to display.
Size of this preview: 800 × 466 pixels.

Original file (3,047 × 1,773 pixels, file size: 366 KB, MIME type: image/png)

 **Open in Media Viewer** 

This file is from Wikimedia Commons and may be used by other projects. The description on its file description page there is shown below.

Popis kartičky syndrom Brugadových, typ 2

Summary

Description	There is no Type I morphology to be seen on this ECG. There is however a suggestion of a Brugada syndrome ECG by the RSR in V1 and V2 (could also represent Right Bundle Branch Block) with, typically for Brugada syndrome associated ECGs, ST elevation; best seen in V2. RSR with ST elevation and a positive T wave is known as a 'saddle back' ST morphology. This patient received sodium channel blocking drugs to acquire a Type I morphology and the diagnosis. Note that V5 and V6 are placed one intercostal space above V1 and V2 (V1 IC3 and V2 IC3).
Date	10 April 2010, 11:08
Source	CardioNetworks: Brugada_syndrome_type2_example1.png (http://en.ecgpedia.org/wiki/File:Brugada_syndrome_type2_example1.png)
Author	CardioNetworks: []
Permission (Reusing this file)	<div>CardioNetworks the copyright owner of the works at en.ecgpedia.org, pcipedia.org and echopedia.org agrees to publish these works under the license below: Note: this does not apply to any of the works at https://en.ecgpedia.org/wiki/Rhythm_Puzzles and images with a different license as mentioned in the image description.</div> <div>This file is licensed under the Creative Commons Attribution-Share Alike 3.0 Unported (https://creativecommons.org/licenses/by-sa/3.0/deed.en) license.</div>

You are free:

- **to share** – to copy, distribute and transmit the work
- **to remix** – to adapt the work



Under the following conditions:

- **attribution** – You must give appropriate credit, provide a link to the license, and indicate if changes were made. You may do so in any reasonable manner, but not in any way that suggests the licensor endorses you or your use.
- **share alike** – If you remix, transform, or build upon the material, you must distribute your contributions under the same or compatible license (<https://creativecommons.org/share-your-work/licensing-considerations/compatible-licenses>) as the original.

This work is **free** and may be used by anyone for any purpose. If you wish to **use this content**, you do not need to request permission as long as you follow any licensing requirements mentioned on this page.



The Wikimedia Foundation has received an e-mail confirming that the copyright holder has approved publication under the terms mentioned on this page. This correspondence has been **reviewed** by a **Volunteer Response Team (VRT) member** and stored in our **permission archive**. The correspondence is available to trusted volunteers as **ticket #2011102310008874**.

If you have questions about the archived correspondence, please use the **VRT noticeboard**. Ticket link:

<https://ticket.wikimedia.org/otrs/index.pl?Action=AgentTicketZoom&TicketNumber=2011102310008874>

Action=AgentTicketZoom&TicketNumber=2011102310008874

Find other files from the same ticket:

ECGpedia Original upload log

Original upload log for Brugada_syndrome_type2_example1.png (http://en.ecgpedia.org/wiki/File:Brugada_syndrome_type2_example1.png) from CardioNetworks ECGpedia

Date/Time	Dimensions	User	Comment
11:08, 10 April 2010 (http://nl.ecgpedia.org/images/f/fc/Brugada_syndrome_type2_example1.png)	3,300 × 1,950 (363 KB)	[] ([Talk] • [Contrib])	

File history

Click on a date/time to view the file as it appeared at that time.

	Date/Time	Thumbnail	Dimensions	User	Comment
current	16:21, 11 November 2019		3,047 × 1,773 (366 KB)	wikimediacommons>Doc James	Cropped 8 % horizontally, 9 % vertically using CropTool with precise mode.

File usage

There are no pages that use this file.

Metadata

This file contains additional information, probably added from the digital camera or scanner used to create or digitize it.

If the file has been modified from its original state, some details may not fully reflect the modified file.