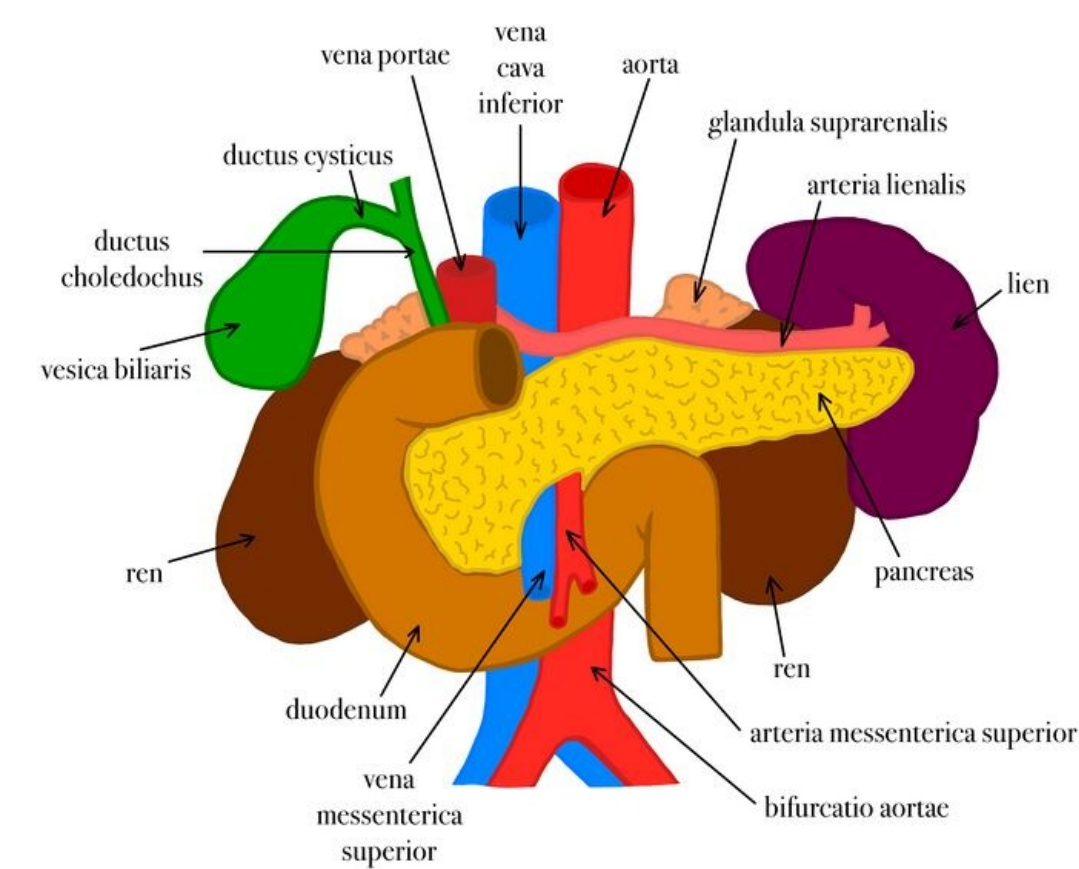


# Soubor:Syntopie duodena .jpg



This image can contain annotations.  
Move the mouse over the image to display.  
Size of this preview: 735 × 600 pixels.

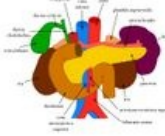
Original file (1,225 × 1,000 pixels, file size: 409 KB, MIME type: image/jpeg)

 [Open in Media Viewer](#) 

Nákres syntopie duodena, pankreatu, ledvin a sleziny

## File history

Click on a date/time to view the file as it appeared at that time.

	Date/Time	Thumbnail	Dimensions	User	Comment
current	09:30, 29 October 2022		1,225 × 1,000 (409 KB)	Viktorie Koberová (talk   contribs)	

You cannot overwrite this file.

## File usage

The following 2 pages use this file:

- Duodenum
- Tenké střevo

## Metadata

This file contains additional information, probably added from the digital camera or scanner used to create or digitize it.

If the file has been modified from its original state, some details may not fully reflect the modified file.