

Soubor:Vitelinni1.png

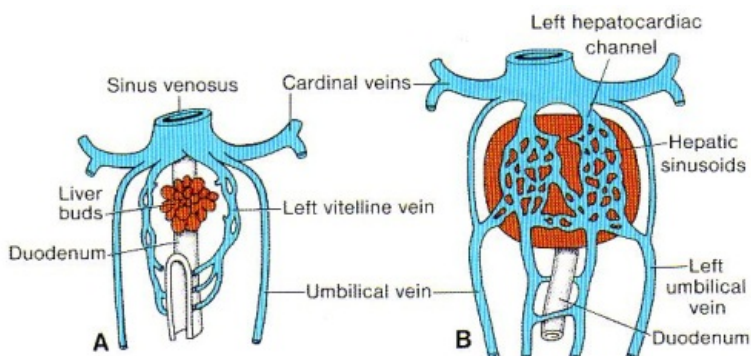


Figure 12.41 Development of the vitelline and umbilical veins during the (A) fourth and (B) fifth weeks. Note the plexus around the duodenum, formation of the hepatic sinusoids, and initiation of left-to-right shunts between the vitelline veins.



This image can contain annotations.
Move the mouse over the image to display.
No higher resolution available.

Vitelinni1.png (599 × 272 pixels, file size: 186 KB, MIME type: image/png)

 **Open in Media Viewer** 

Popis Schéma vývoje vv. vitellinae v závislosti na růstu jaterního pupenu

Zdroj Langmanova lékařská embryologie

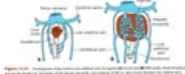
Datum 2013-01-17

Autor Sadler Thomas W.

Licence Vyhrazeno jen pro přímé užití na stránkách WikiSkripta.eu

File history

Click on a date/time to view the file as it appeared at that time.

	Date/Time	Thumbnail	Dimensions	User	Comment
current	18:46, 17 January 2013		599 × 272 (186 KB)	Robertfaber (talk contribs)	{ {Soubor popis = Schéma vývoje vv. vitellinae v závislosti na růstu jaterního pupenu zdroj = Langmanova lékařská embryologie datum = 2013-01-17 autor = Sadler Thomas W. licence = { {WS_licence}} } } Kategorie:Nezařazené soubory [[Kategori

You cannot overwrite this file.

File usage

The following page uses this file:

- Uživatel:Robertfaber/Pískoviště