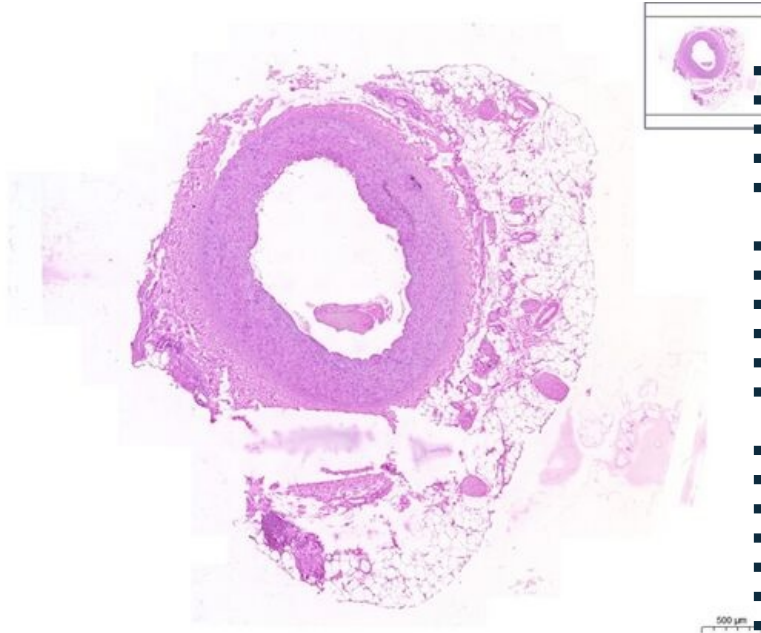


# Svalová arterie / Muscular artery (a. renalis) - HE

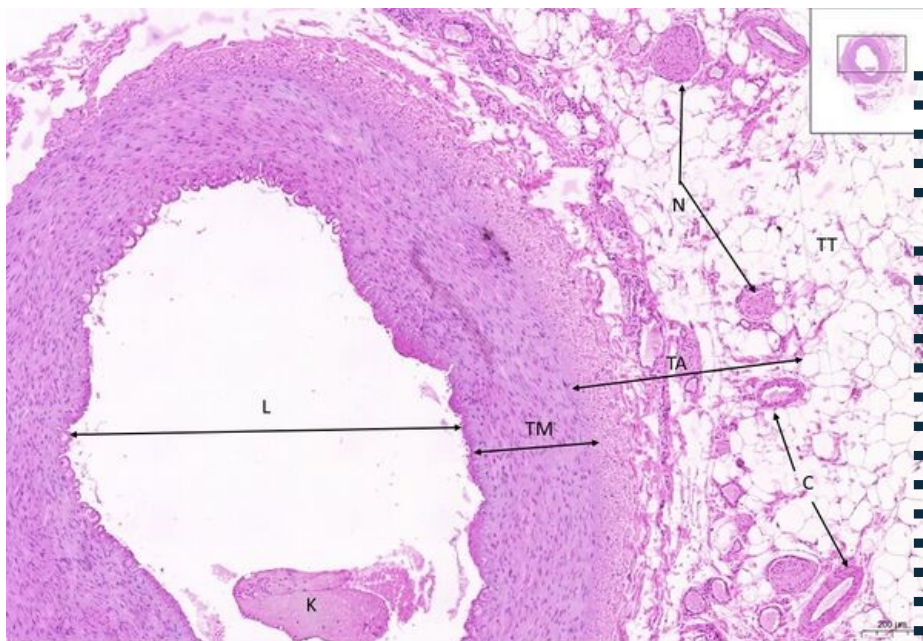
## Svalová arterie/ Muscular artery HE 1,9x



### Svalová arterie/ Muscular artery HE

- 1. **TI** - tunica intima
- **a)E** - endotel/ endothelium
- **b) MEI** - membrana elastica interna
- 2. **TM** - tunica media
- **a) JSB** - jádra svalových buněk/ muscle cell nucleus
- **b) EV** - elastická vlákna/ elastic fibres
- 3. **MEE** - membrana elastica externa
- 4. **TA** - tunica adventicia
- 5. **TT** - tuková tkáň/ adipose tissue
- 6. **K** - krev/ blood
- 7. **C** - cévy/ blood vessels (vasa vasorum)
- **a) A** - artérie/artery
- **b) V** - véna/ vein
- 8. **L** - lumen
- 9. **N** - nervy/ nerves

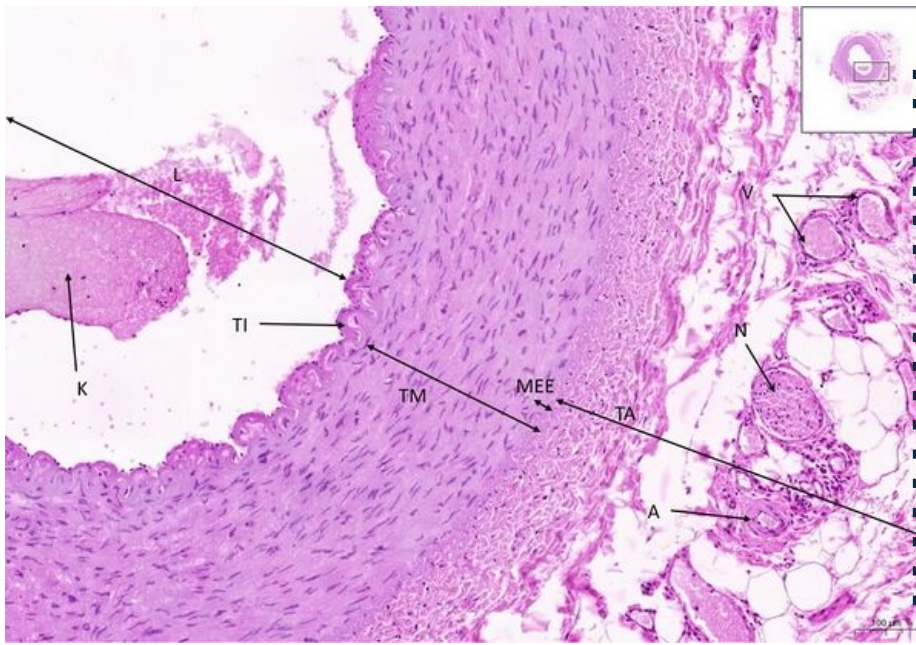
## Svalová arterie/ Muscular artery HE 5x



### Svalová arterie/ Muscular artery HE

- 2. **TM** - tunica media
- 4. **TA** - tunica adventicia
- 5. **TT** - tuková tkáň/ adipose tissue
- 6. **K** - krev/ blood
- 7. **C** - cévy/ blood vessels (vasa vasorum)
- 8. **L** - lumen
- 9. **N** - nervy/ nerves

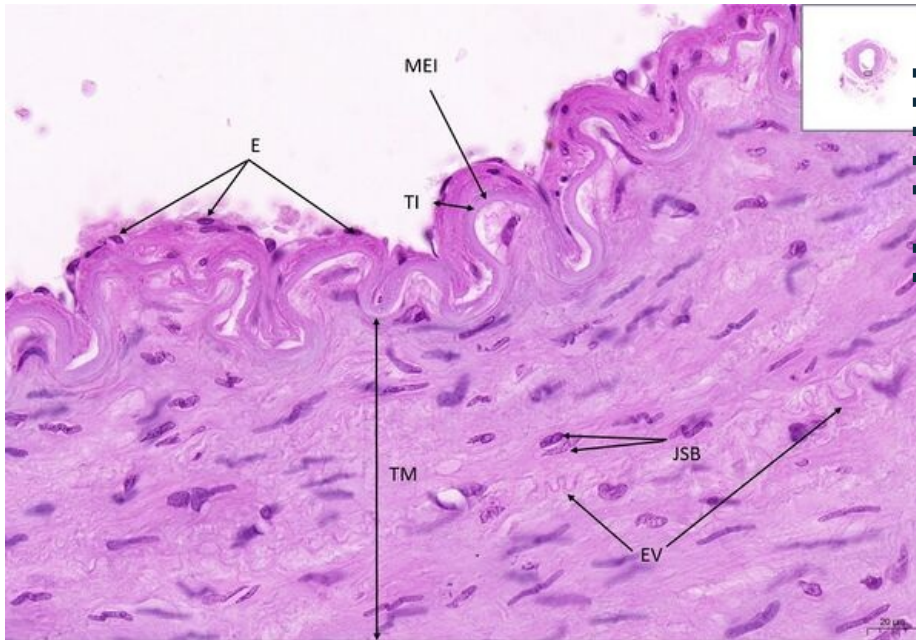
## Svalová arterie/ Muscular artery HE 10x



**Svalová arterie/ Muscular artery HE**

- 1. **TI** - tunica intima
- 2. **TM** - tunica media
- **b) EV** - elastická vlákna/ elastic fibres
- 3. **MEE** - membrana elastica externa
- 4. **TA** - tunica adventicia
- 5. **TT** - tuková tkáň/ adipose tissue
- 6. **K** - krev/ blood
- 7. **C** - cévy/ blood vessels (vasa vasorum)
- **a) A** - artérie/artery
- **b) V** - véna/ vein
- 8. **L** - lumen
- 9. **N** - nervy/ nerves

## Svalová arterie/ Muscular artery HE 40x



**Svalová arterie/ Muscular artery HE**

- 1. **TI** - tunica intima
- **a) E** - endotel/ endothelium
- **b) MEI** - membrana elastica interna
- 2. **TM** - tunica media
- **a) JSB** - jádra svalových buněk/ muscle cell nucleus
- **b) EV** - elastická vlákna/ elastic fibres

## Navigace

### Navigace: Cévní systém / Circulatory system

← Preparát C2

Seznam preparátů

Preparát C4 →