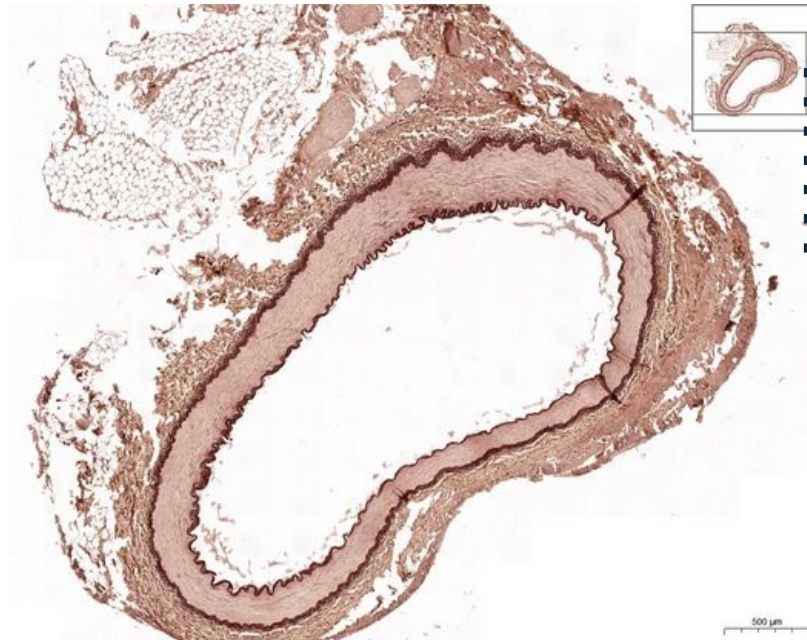


Svalová arterie / Muscular artery (a. renalis) - WRF

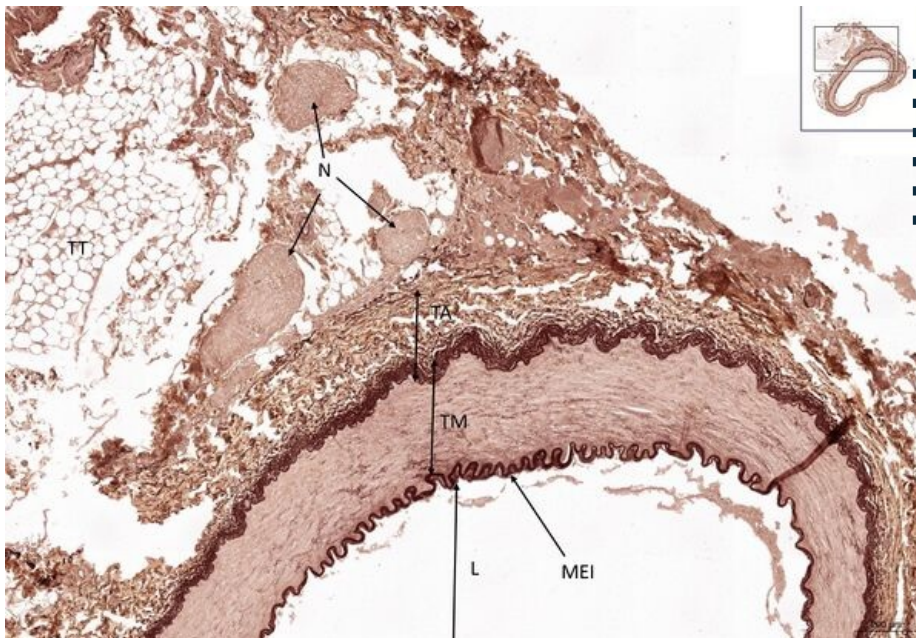
Svalová arterie/ Muscular artery RF 2,7x



Svalová arterie/ Muscular artery RF

- 1) MEI - membrana elastica interna
- 2. TM - tunica media
- 3.) MEE- membrana elastica externa
- 4. TA - tunica adventicia
- 5. TT - tuková tkáň/ adipose tissue
- 6. L - lumen
- 7. N - nervy/ nerves

Svalová arterie/ Muscular artery RF 5x



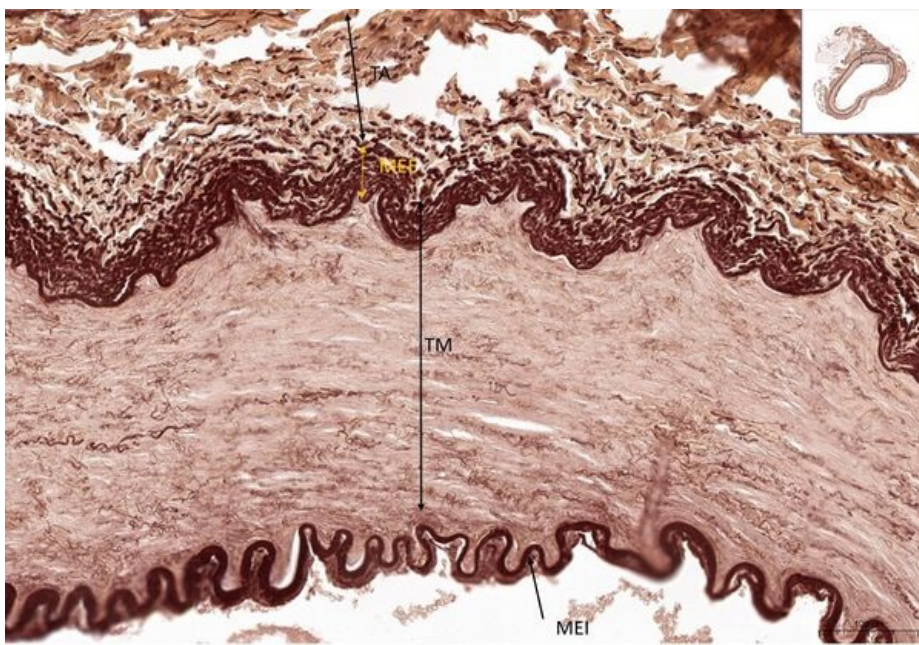
Svalová arterie/ Muscular artery RF

- 1) MEI - membrana elastica interna
- 2. TM - tunica media
- 4. TA - tunica adventicia
- 5. TT - tuková tkáň/ adipose tissue
- 6. L - lumen
- 7. N - nervy/ nerves

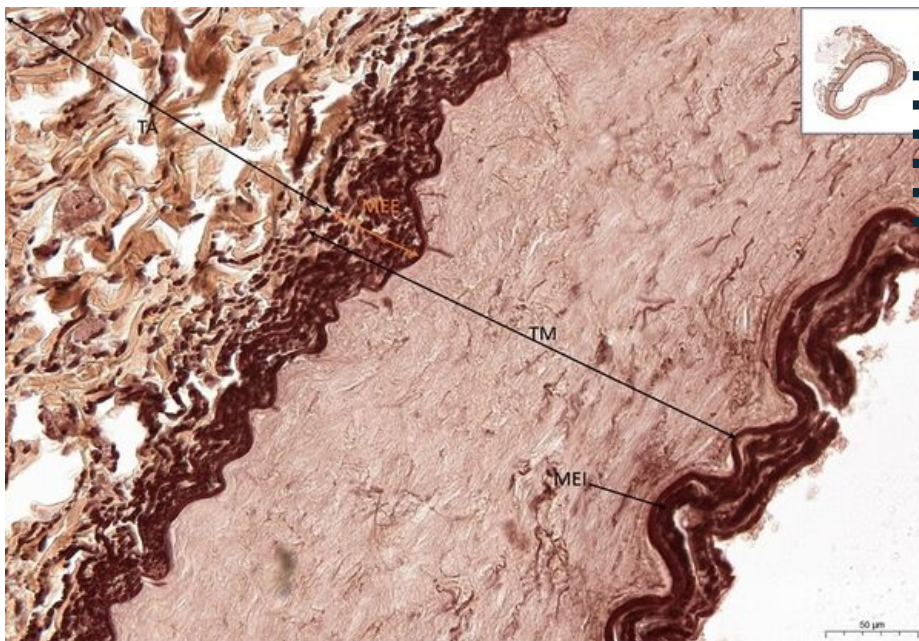
Svalová arterie/ Muscular artery RF 15,5x

Svalová arterie/ Muscular artery RF

- 1) MEI - membrana elastica interna
- 2. TM - tunica media
- 3.) MEE- membrana elastica externa
- 4. TA - tunica adventicia



Svalová arterie/ Muscular artery RF 28,9x



Svalová arterie/ Muscular artery RF

- 1) MEI - membrana elastica interna
- 2. TM - tunica media
- 3.) MEE- membrana elastica externa
- 4. TA - tunica adventicia

Navigace

Navigace: Cévní systém / Circulatory system

← Preparát C3

Seznam preparátů

Preparát C5 →