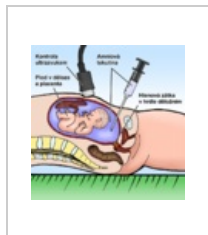


Uživatel:Filip/Obrázky

Zde naleznete přehled mnou stvořených obrázků. Nejsou zde uvedeny překlady, profilové fotografie členů WikiTýmu a možná ještě nějaké drobnosti.

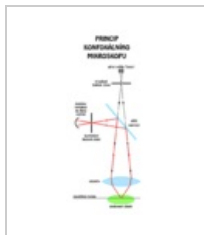
Různé



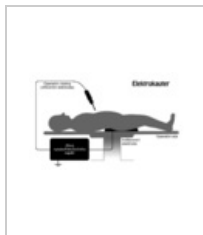
Amniocentéza



KPR
novorozence



Konfokální
mikroskop



Elektrokauter



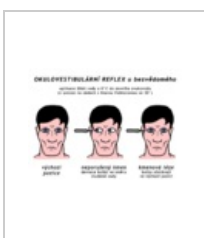
Receptory



Termoreceptory



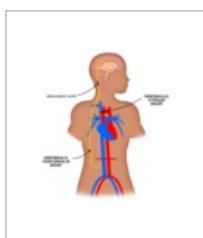
Okulocefalický
reflex



Okulovestibulár
ní reflex

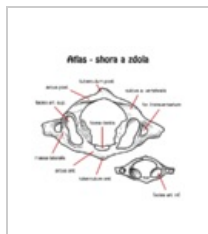


Okulovestibulár
ní reflex u
pacienta v
bezvědomí

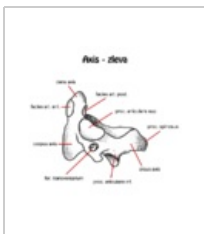


VP a VA shunt

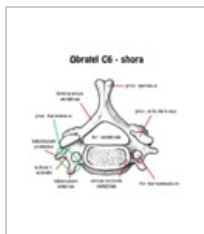
Anatomie



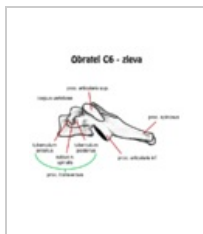
Atlas



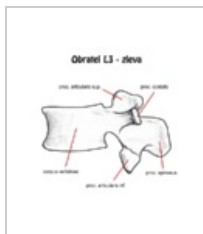
Axis zleva



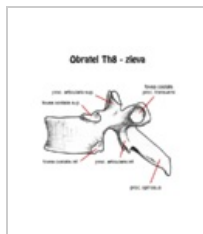
C6 shora



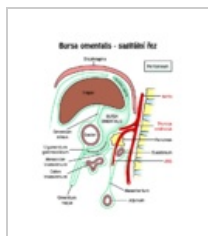
C6 zleva



L3 zleva



Th8 zleva



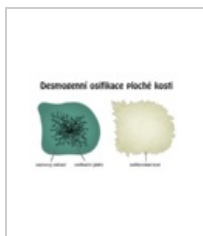
Bursa omentalis



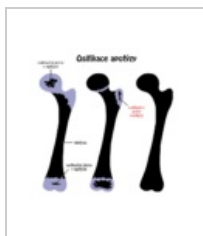
Osifikace dlouhé
kosti



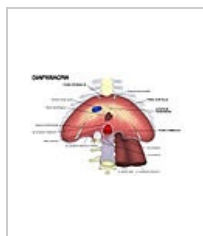
Osifikace krátké
kosti



Osifikace
desmogenní



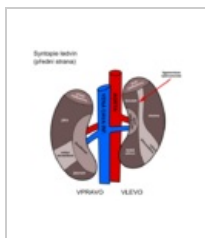
Osifikace
apofýzy



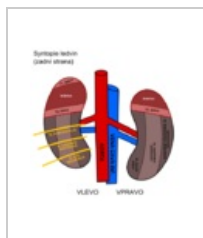
Diaphragma



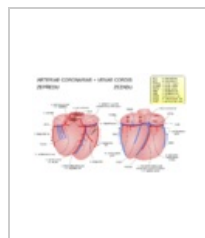
Foramina humero- a omotricipitale



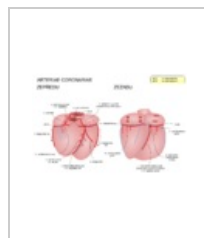
Syntopie ledvin (přední strana)



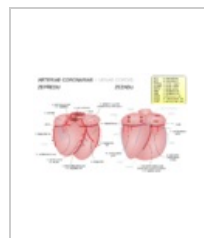
Syntopie ledvin (zadní strana)



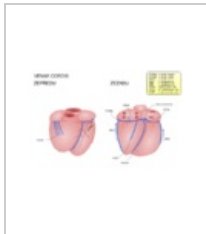
Cévy srdce



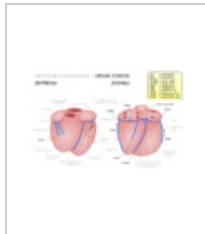
Cévy srdce: arterie



Cévy srdce: arterie (a vény)

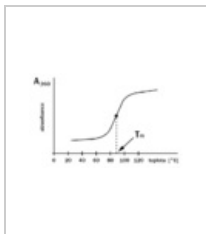


Cévy srdce: vény



Cévy srdce: vény (a arterie)

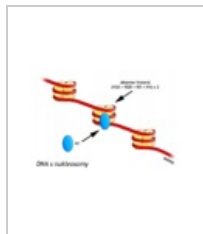
Biochemie/patobiochemie



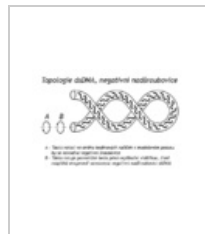
Denaturace nukleových kyselin



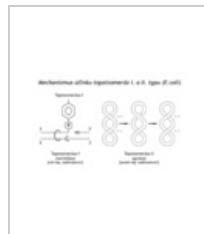
Provlečené cirkulární dsDNA



DNA s nukleosomy



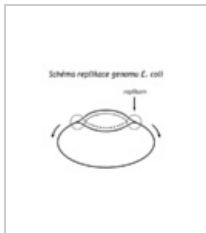
DsDNA negativní nadšroubovice



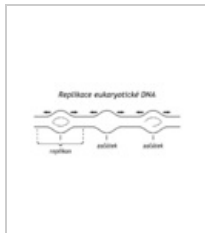
Topoisomerasa E coli



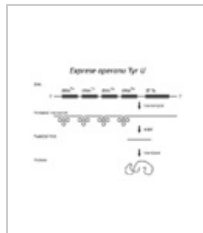
Uspořádání blottingu



Replikace genomu E. coli



Replikace eukaryotické DNA



Expres operonu Tyr U



Syntéza eukaryotických rRNA



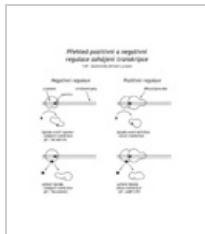
Úprava pre-mRNA eukaryot



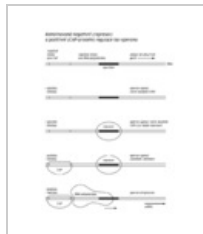
Transkripční jednotka rRNA (E. coli)



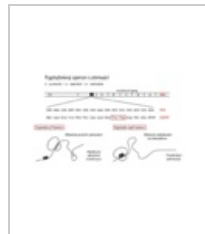
Sekvence lac operátoru



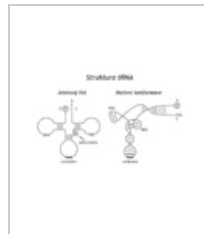
Regulace zahájení transkripce



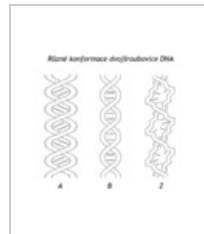
Kombinovaná regulace lac operonu



Tryptofanový operon s atenuací



Struktura tRNA



DNA konformace



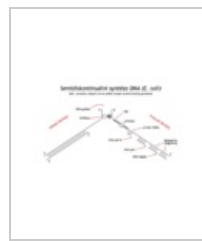
Reakce DNA ligázy



Struktura ribozomu



Polyribozom



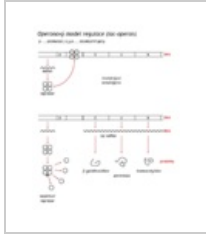
Semidiskontinuální syntéza DNA



Bakteriální transkripční jednotka



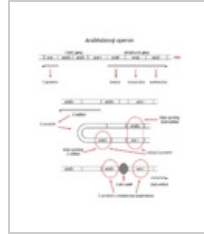
Bakteriální promotor



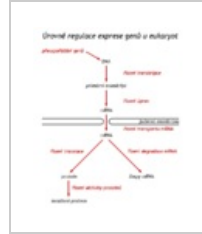
Operonový model regulace (lac-operon)



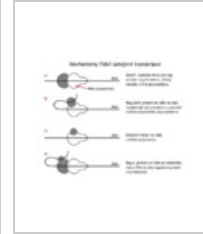
Spřažení transkripce a translace



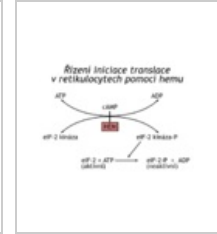
Arabinózový operon



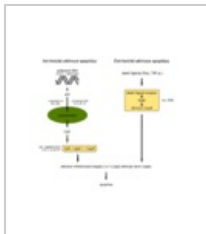
Úrovně regulace exprese genů u eukaryot



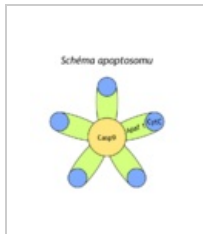
Zahájení transkripce



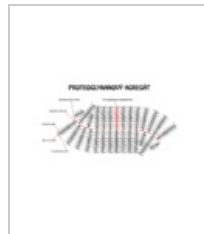
Řízení iniciace translace v retikulocytech pomocí hemu



Apoptóza



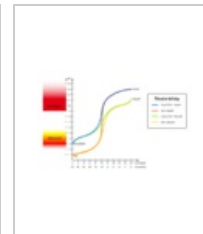
Apoptosom



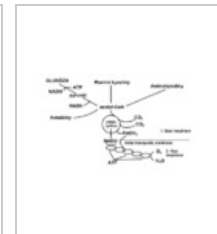
Proteoglykan



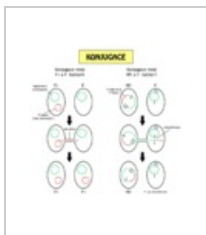
Osmóza



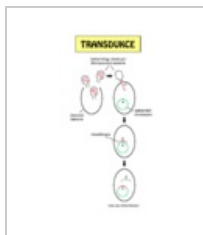
Titrační křivky



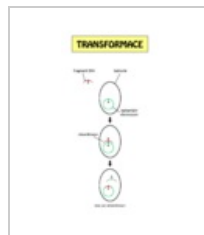
Genetika/Biologie



Konjugace

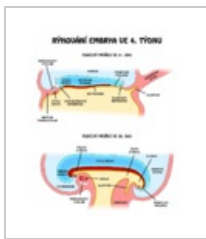


Transdukce

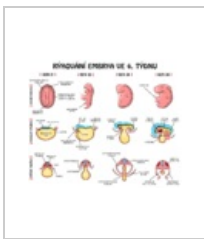


Transformace

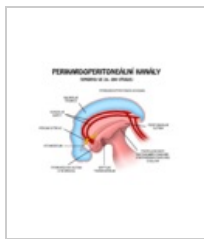
Embryologie



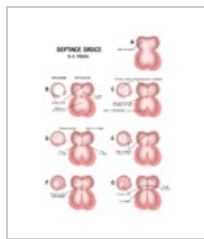
Rýhování
embrya ve 4.
týdnu
nitroděložního
vývoje



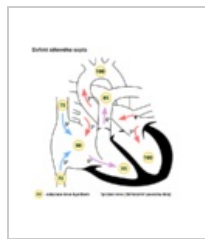
Přehled rýhování
embrya ve 4.
týdnu
nitroděložního
vývoje



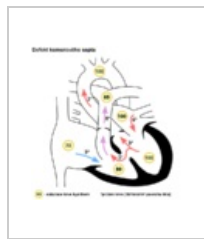
Perikardoperiton
eální kanály



Septace srdce



VVV - Defekt
síňového septa



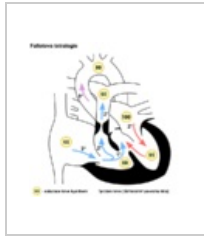
VVV - Defekt
komorového
septa



VVV - Otevřená
tepenná dučej
(PDA)

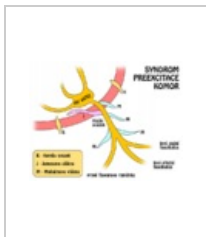


VVV - Koarktace
aorty

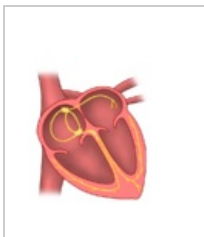


VVV - Fallotova
tetralogie

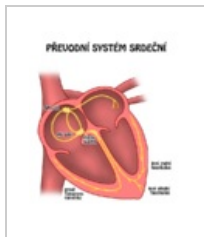
Kardiologie



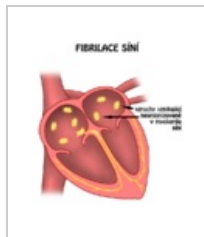
Preexcitace
komor



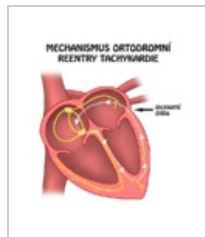
Převodní systém
srdeční - bez
popisků



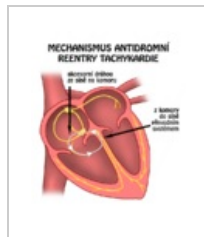
Převodní systém
srdeční - s
popisky



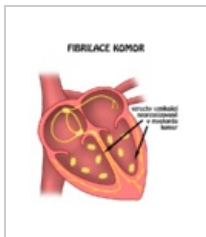
Fibrilace síní



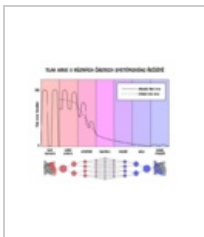
Mechanismus
ortodromní
reentry
tachykardie



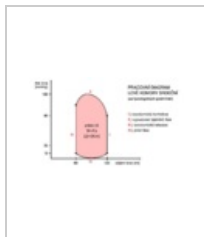
Mechanismus
antidromní
reentry
tachykardie



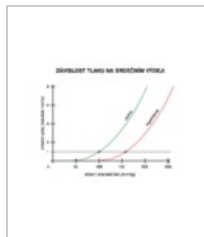
Fibrilace komor



Tlak krve v
systémovém
řečišti



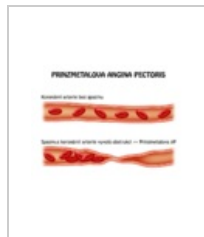
Pracovní
diagram LK



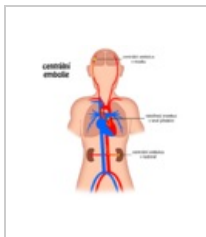
Křivka výdej/tlak



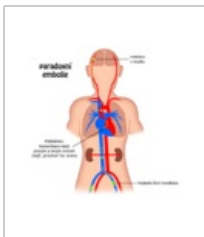
Aterosklerózou
vyvolaná AP



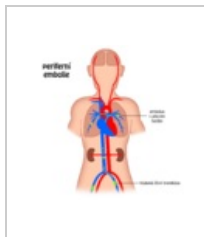
Prinzmetalova
AP



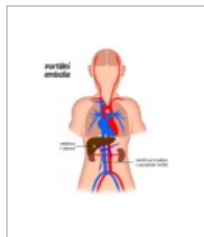
Centrální
embolie



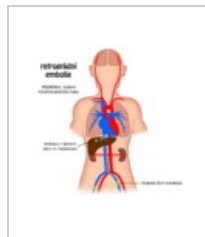
Paradoxní
embolie



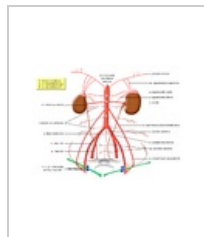
Periferní
embolie



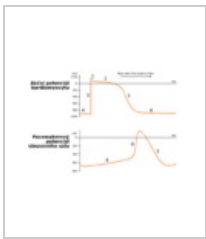
Portální embolie



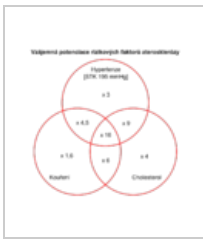
Retrográdní
embolie



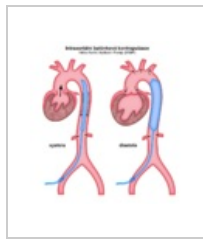
Párové větve
břišní aorty



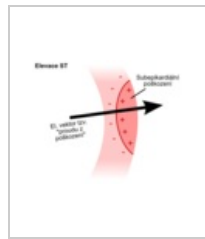
Srdeční potenciály



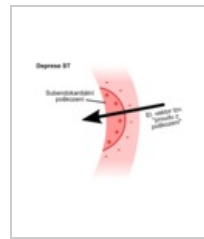
Kumulace rizikových faktorů aterosklerózy



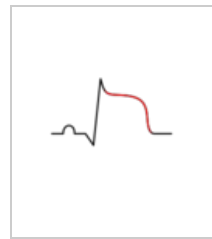
Intraaortální balónková kontrapulzace



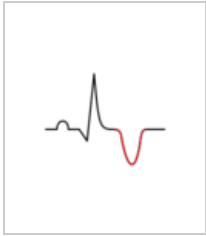
EKG: vznik ST elevace



EKG: vznik ST deprese



EKG: elevace ST



EKG: inverze T



EKG: patologické Q

Pneumologie



Tachypnoe



Bradypnoe



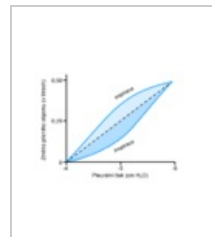
Kussmaulovo dýchání



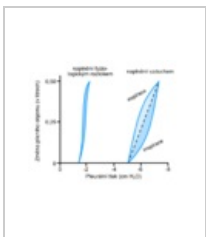
Biotovo dýchání



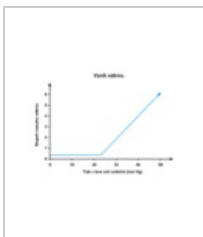
Cheyneovo-Stokesovo dýchání



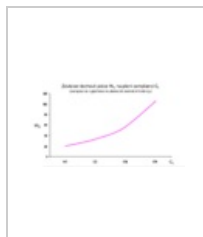
Závislost plicního objemu na pleurálním tlaku



Závislost plicního objemu na pleurálním tlaku



Rozsah edému v závislosti na tlaku v levé síni srdeční

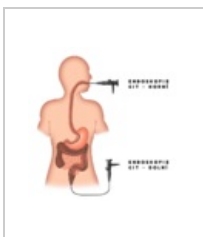


Závislost dechové práce na plicní complianci

GIT + metabolismus



Klasifikace vrozených atrezií/píštělů jícnu



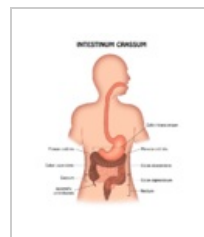
Endoskopie GIT



Volvulus tenkého střeva



Cesta Glc a inzulinu do systémového oběhu



Intestinum crassum

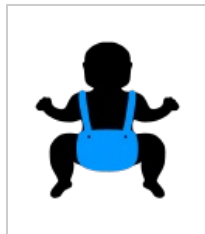
Ortopedie



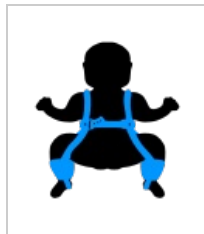
PFFD - proximální fokální femorální deficeience



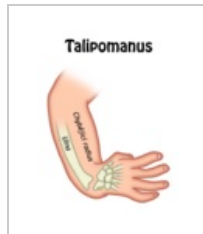
Kongenitální pakloub bérce - klasifikace dle Boyda



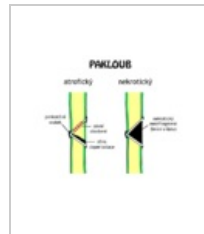
Frejkova peřinka



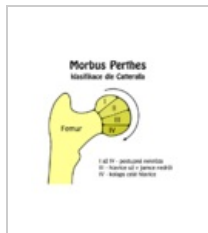
Pavlíkovy třmeny



Talipomanus



Pakloub



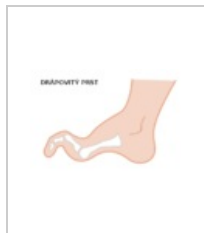
M. Perthes - klasif. dle Catteralla



Prst kladivkový



Prst paličkový



Prst drápotvý

Neurologie



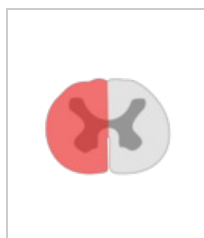
Příznaky postižení CNS



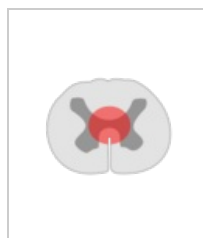
Příznaky postižení PNS



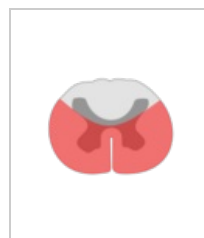
Sy. zadních a postranních provazců



Sy. unilaterální

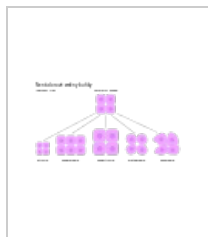


Sy. centromedulární

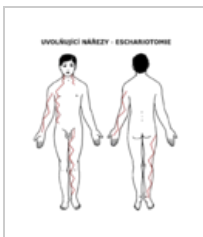


Sy. anterolaterální

Překreslené obrázky



Nenádorové změny buňky



Uvolňující nářezy



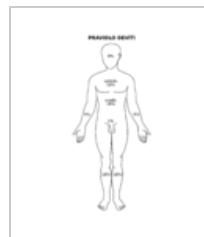
Nářezy v orbitopalpebral. sulku



Wiki čtyřlístek



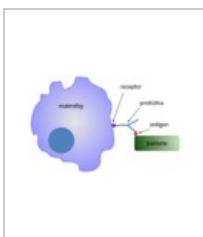
Mini Wikilístek



Pravidlo devíti



Popálenina - rozsah rukou

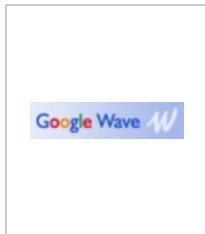


Opsonizace

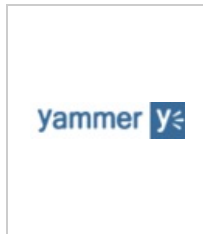
Wikiobrázky



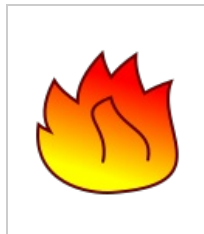
ZATÍM
NEVYUŽITÝ
OBRÁZEK



Wave logo



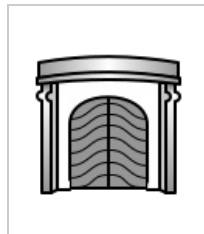
Yammer logo



Logo popálenin
barevně



Logo popálenin
čb.



Logo portálů



Logo
patobiochemie



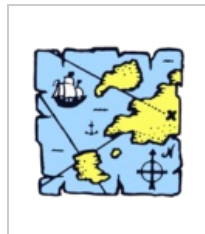
Logo nutričního
lékařství



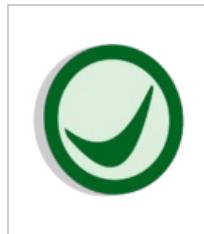
Nálepka
grafik/ilustrátor



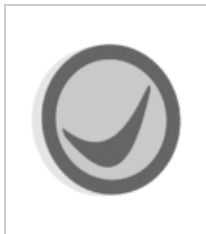
WikiSluníčko



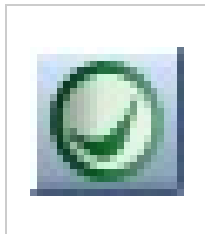
Pův. návrh na
ikonu šablony
imagemap



Kontrola
učitelem



Spadá kontrola
učitelem



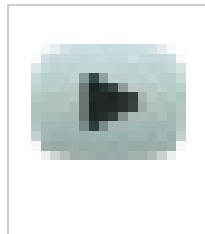
Tlačítko pro
kontrolu
učitelem



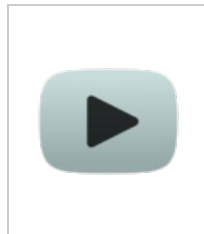
WikiFig
(autorem Weru ([https://www.wiki
skripta.eu/index.
php?title=U%C5
%BEivatel:Weru](https://www.wiki skripta.eu/index.php?title=U%C5 %BEivatel:Weru))



Ikonka pro video
(starší)



Ikonka pro video



Ikonka pro video